

# TOWNSHIP 35 NORTH, RANGE 35 EAST, OF THE MOUNT DIABLO MERIDIAN, NEVADA

## DEPENDENT RESURVEY

OFFICIALLY FILED  
NEVADA LAND OFFICE  
10:00 AM 12/16/1968

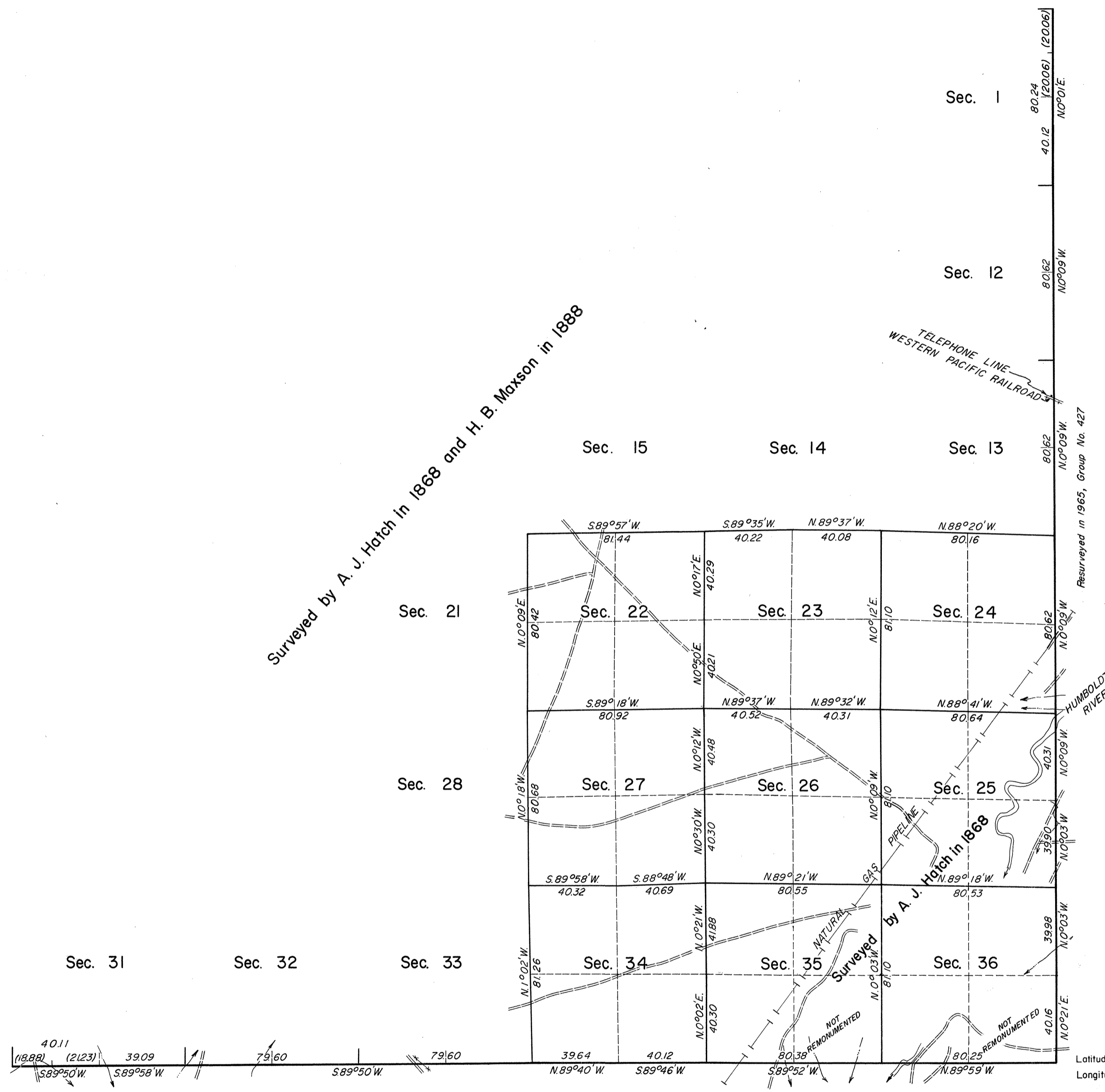
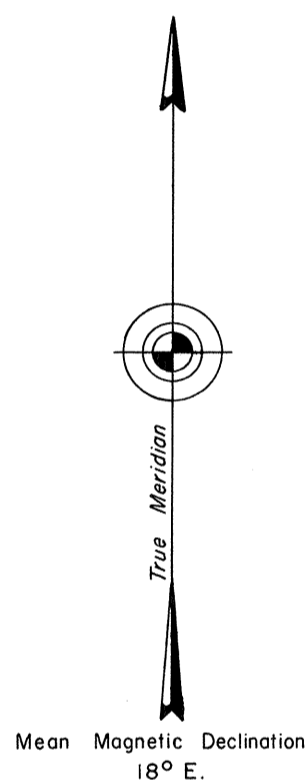
History of the earlier surveys is contained in the field notes.

The dependent resurvey of the south boundary was executed concurrently under T. 34 N., R. 35 E., of this group.

This plat represents a retracement and re-establishment of a portion of the subdivisional lines, designed to restore the corners in their true original locations according to the best available evidence.

Areas are as shown on the plats approved August 4, 1868, and March 20, 1891.

Survey executed by James R. Munson and Dennis D. Bland, Cadastral Surveyors, November 14 to November 28, 1966, under Special Instructions dated September 16, 1966, for Group No. 442, Nevada.



UNITED STATES DEPARTMENT OF THE INTERIOR  
BUREAU OF LAND MANAGEMENT  
Washington, D. C. October 17, 1968

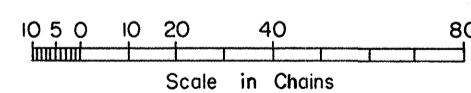
This plat is strictly conformable to the approved field notes, and the survey, having been correctly executed in accordance with the requirements of law and the regulations of this Bureau, is hereby accepted.

For the Director

*R. E. Braun*

Chief, Division of Engineering

Latitude 40°51'28.1"N.  
Longitude 117°59'01.1"W.



Area Resurveyed 5,760.00 Acres

T35 N R35 E