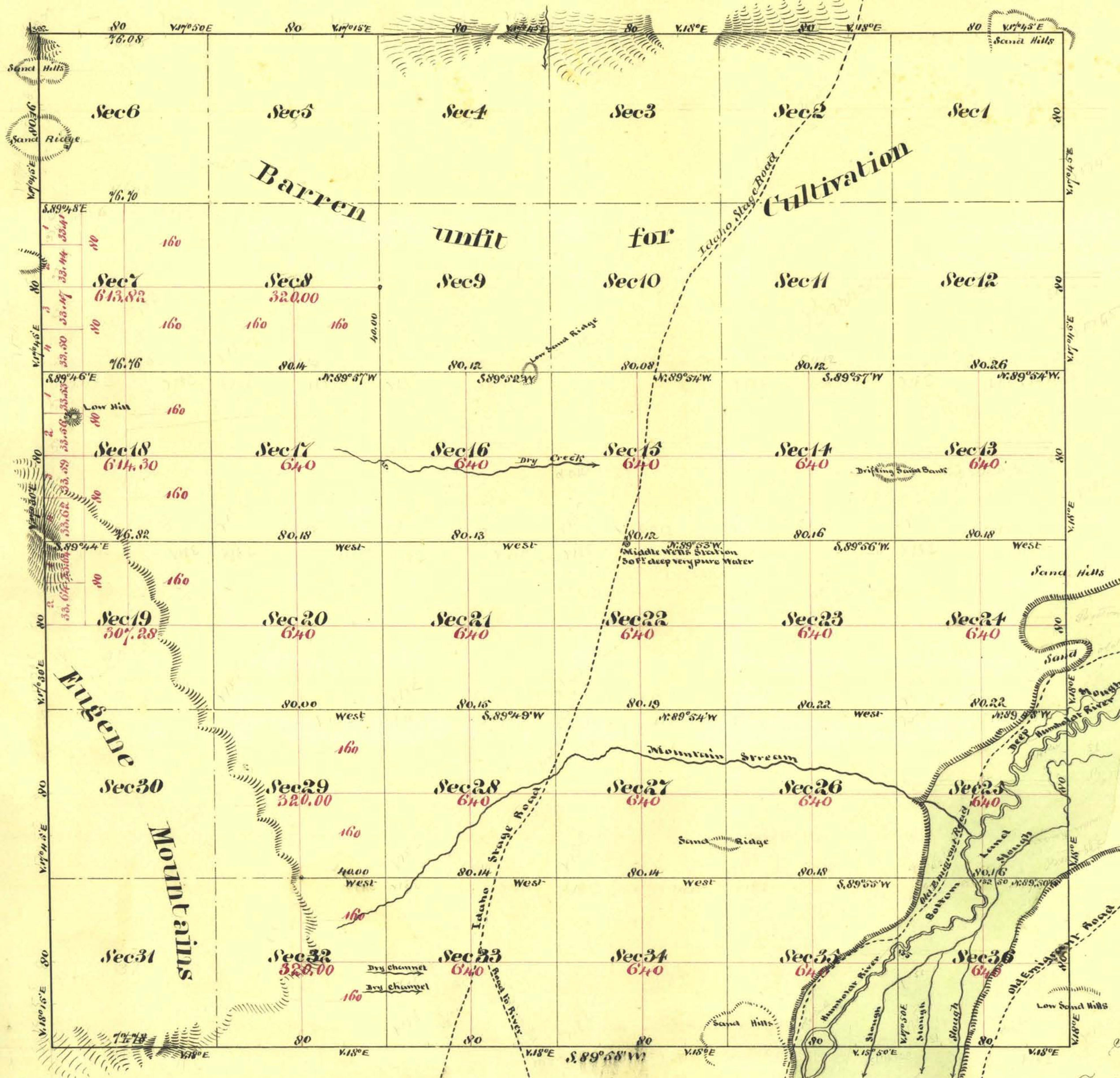


Township N^o 35 North

Range N^o 35 East

Mount Diablo Meridian



Aggregate Area of Public Lands (Surveyed)	14, 016.40 Acres
Estimated Area of Barren Mountain Land (unsurveyed)	8, 878.44 "
Aggregate	22, 893.84 "

Subdivision Lines not otherwise noted run with a Variation of 15'

The above Map of Township N^o 35 North Range N^o 35 East Mount Diablo Meridian is strictly conformable to the field notes of the Surveys thereof on file in this Office which have been examined and approved
 U.S. Surveyor General's Office
 Virginia City Nevada
 August 14th 1868

Surveys Designated	By Whom Surveyed	Date of Contract	Amount of Surveys in Acres	When Surveyed	Notes
East Boundary of Township	William Tyler	June 12 th 1867	6, 00, 00	1867	
Rest of Township Lines	" "	July 20 th 1867	17, 77, 94	" "	
Subdivision Lines	A. J. Hatch	December 31 st 1867	44, 73, 17	April 13 th 1868	1 5 12

A. K. Safford
 U.S. Surveyor General Nevada