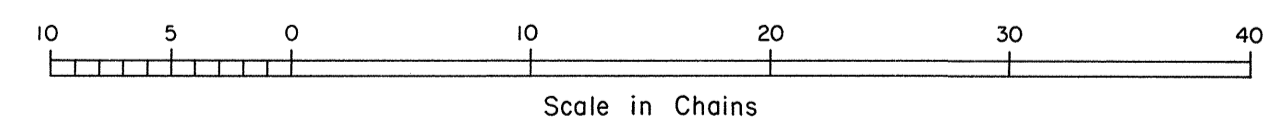
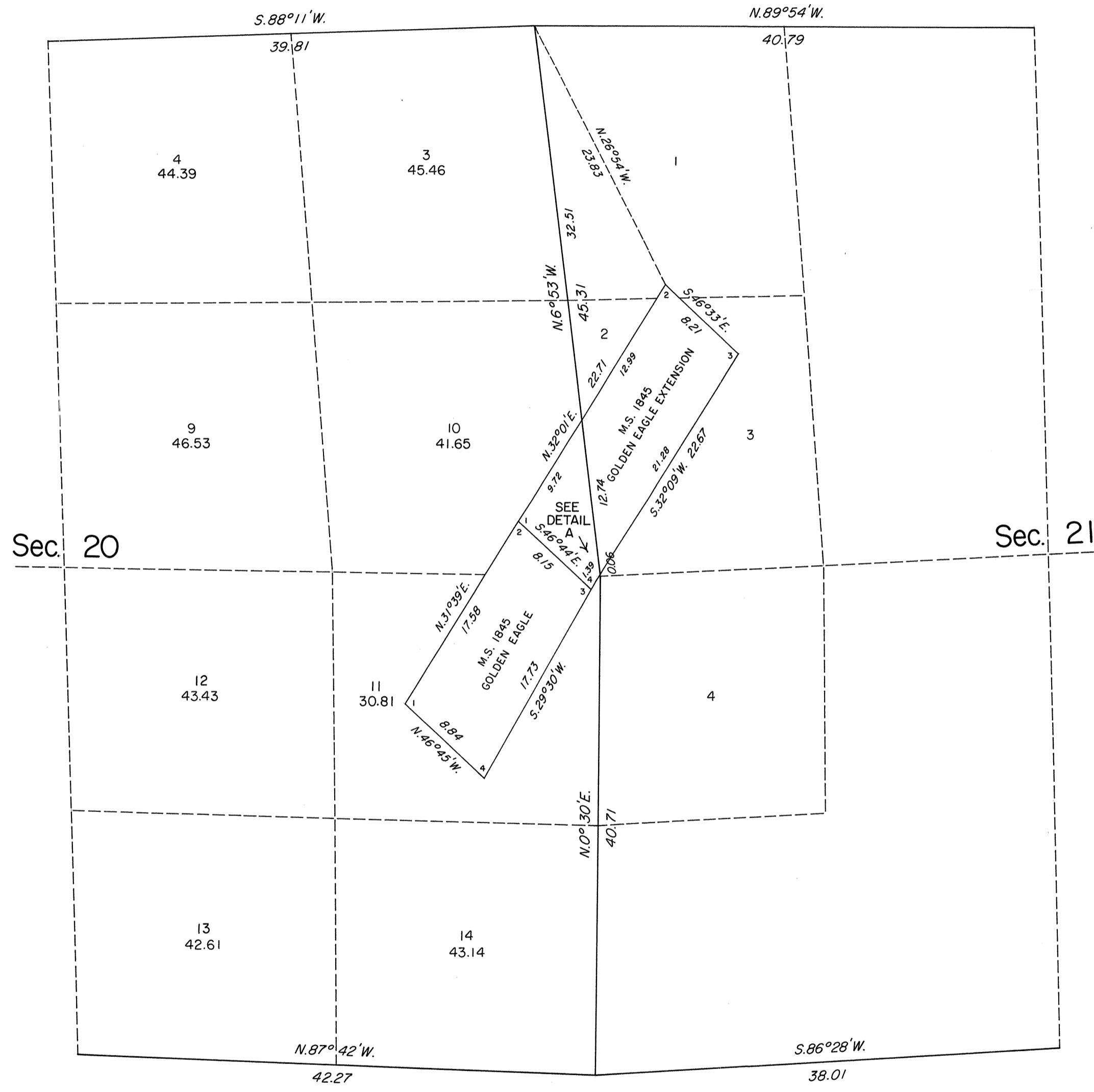
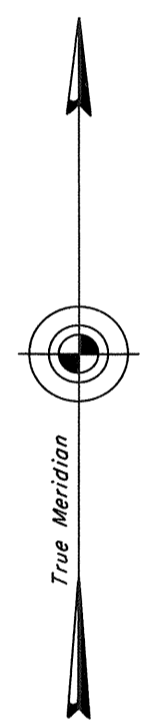
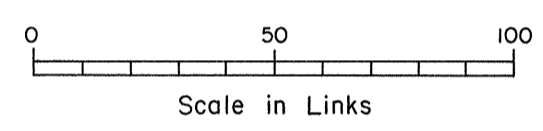
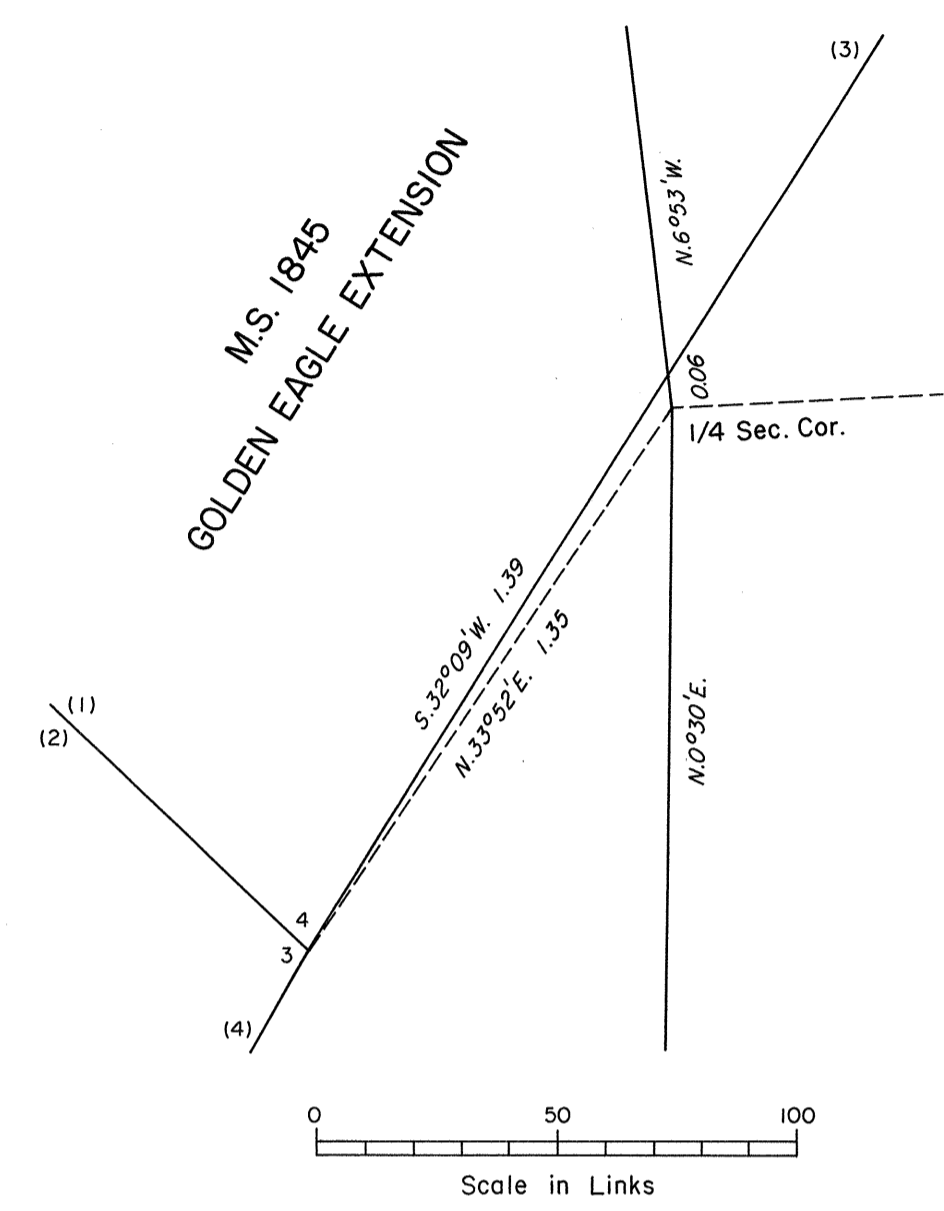


TOWNSHIP 35 NORTH, RANGE 34 EAST, OF THE MOUNT DIABLO MERIDIAN, NEVADA
 ENLARGED DIAGRAM



DETAIL A



Reference should be made to Sheet No. 1 for survey information.

UNITED STATES DEPARTMENT OF THE INTERIOR
 BUREAU OF LAND MANAGEMENT
 Reno, Nevada September 30, 1991

This plat is strictly conformable to the approved field notes, and the survey, having been correctly executed in accordance with the requirements of law and the regulations of this Bureau, is hereby accepted.

For the Director
John J. Parrish
 Chief Cadastral Surveyor, Nevada