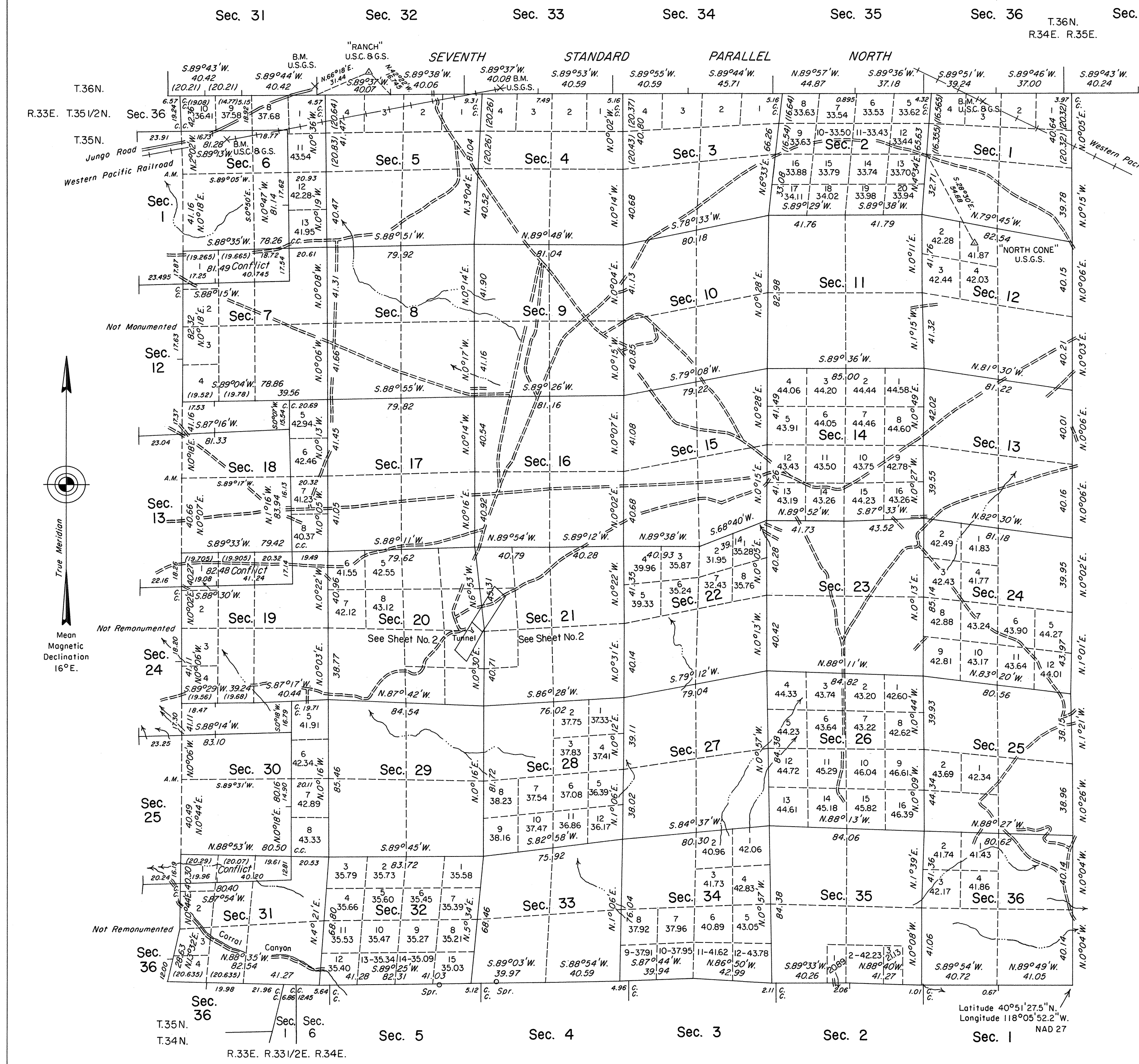


TOWNSHIP 35 NORTH, RANGE 34 EAST, OF THE MOUNT DIABLO MERIDIAN, NEVADA

DEPENDENT RESURVEY



History of the earlier surveys is contained in the field notes.

The east boundary of T. 35 N., R. 33 E., was dependently resurveyed under this same Group, and a portion of the south boundary was dependently resurveyed in T. 34 N., R. 33 1/2 E., executed concurrently under Group No. 654.

This plat, in 2 sheets, represents the dependent resurvey of the Seventh Standard Parallel North, through Range 34 East, a portion of the south boundary, the east and west boundaries, the subdivisional lines and Mineral Survey No. 1845 of T. 35 N., R. 34 E., Mount Diablo Meridian, Nevada; designed to restore the corners in their true original locations according to the best available evidence.

Unless otherwise indicated in the field notes, all courses and distances shown on the plat along the perimeter of the mineral segregation areas were taken or computed from the appropriate mineral survey record.

Areas and lottings, except as indicated hereon, are as shown on the plat approved March 20, 1891, and an undated drawing of relottings in secs. 20 and 21.

For enlargements of the E 1/2 of sec. 20 and the W 1/2 of sec. 21, see sheet No. 2.

Survey executed by Ronald E. Williams, Cadastral Surveyor, beginning May 16, 1988, and completed October 25, 1988, under Special Instructions dated April 25, 1988, and Supplemental Special Instructions dated August 17, 1988, for Group No. 656, Nevada.

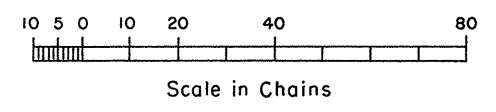
UNITED STATES DEPARTMENT OF THE INTERIOR
BUREAU OF LAND MANAGEMENT

Reno, Nevada September 30, 1991

This plat is strictly conformable to the approved field notes, and the survey, having been correctly executed in accordance with the requirements of law and the regulations of this Bureau, is hereby accepted.

For the Director
John S. Parrish
Chief Cadastral Surveyor, Nevada

Latitude 40°51'27.5"N.
Longitude 118°05'52.2"W.
NAD 27



T.35N., R.34E., M.D.M.

CU

JRM