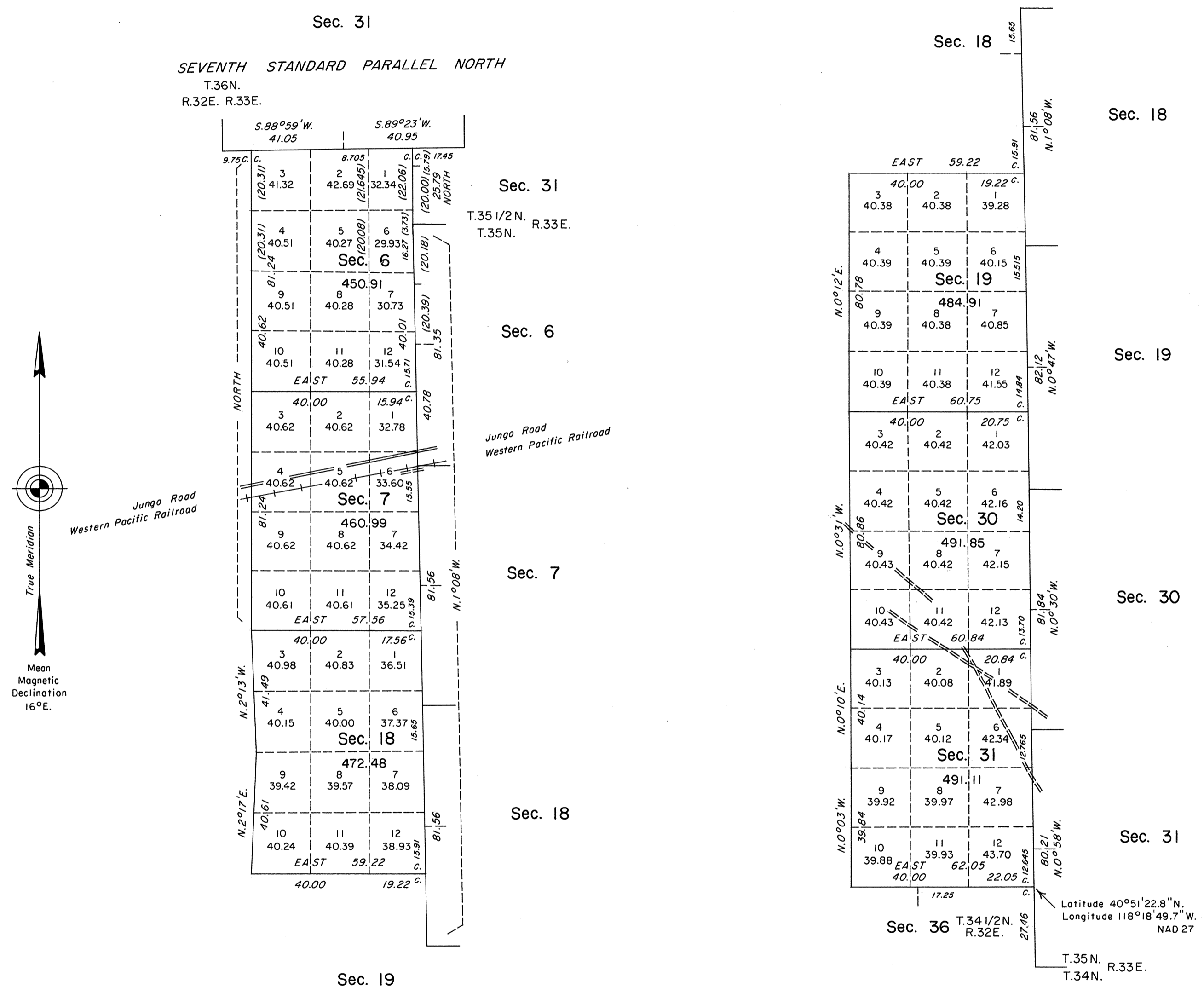


TOWNSHIP 35 NORTH, RANGE 32 1/2 EAST, OF THE MOUNT DIABLO MERIDIAN, NEVADA
 DEPENDENT RESURVEY AND SURVEY



History of the earlier surveys is contained in the field notes.

The Seventh Standard Parallel North, through Range 33 East and the west boundary of T. 35 N., R. 33 E., were dependently resurveyed concurrently under this same Group. The south boundary was surveyed concurrently under Group No. 654.

This plat represents the dependent resurvey of the east boundary of T. 35 N., R. 32 E., designed to restore the corners in their true original locations according to the best available evidence; and the survey of the subdivisional lines of T. 35 N., R. 32 1/2 E., Mount Diablo Meridian, Nevada.

Survey executed by Ronald E. Williams, Cadastral Surveyor, beginning July 13, 1988, and completed October 21, 1988, under Special Instructions dated April 25, 1988, and Supplemental Special Instructions dated August 17, 1988, for Group No. 656, Nevada.

UNITED STATES DEPARTMENT OF THE INTERIOR
 BUREAU OF LAND MANAGEMENT
 Reno, Nevada September 30, 1991

This plat is strictly conformable to the approved field notes, and the survey, having been correctly executed in accordance with the requirements of law and the regulations of this Bureau, is hereby accepted.

For the Director
John S. Parrish
 Chief Cadastral Surveyor, Nevada

