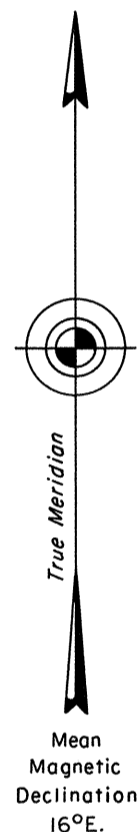


TOWNSHIP 35 NORTH, RANGE 32 EAST, OF THE MOUNT DIABLO MERIDIAN, NEVADA
 DEPENDENT RESURVEY

Surveyed by

H. B. Maxson

in 1888

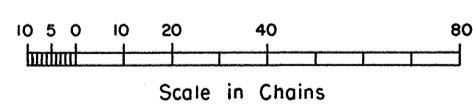
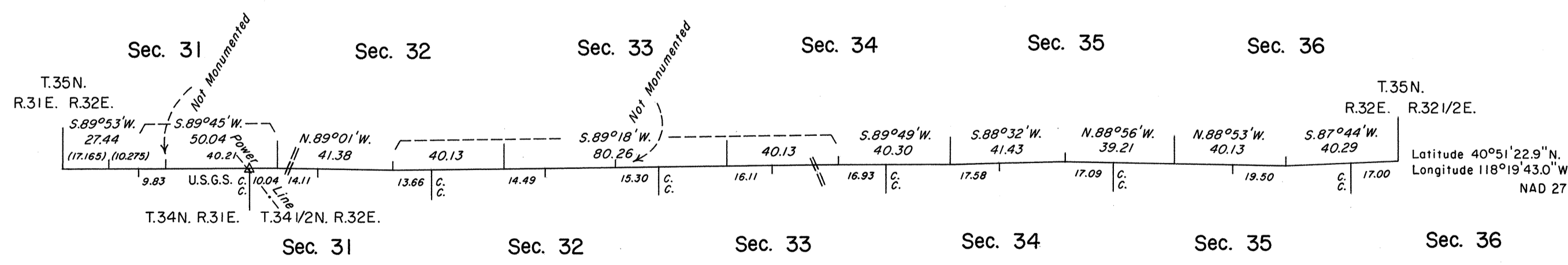


History of the earlier surveys is contained in the field notes.

The east boundary of T. 35 N., R. 32 1/2 E., was dependently resurveyed concurrently under Group No. 656.

This plat represents the dependent resurvey of the south boundary of T. 35 N., R. 32 E., Mount Diablo Meridian, Nevada, designed to restore the corners in their true original locations according to the best available evidence.

Survey executed by Stephen R. Lambeth, Cadastral Surveyor, beginning October 21, 1987, and completed October 21, 1988, under Special Instructions dated September 4, 1987, and the Supplemental Special Instructions dated June 16, 1988, for Group No. 654, Nevada.



UNITED STATES DEPARTMENT OF THE INTERIOR
 BUREAU OF LAND MANAGEMENT

Reno, Nevada September 30, 1991

This plat is strictly conformable to the approved field notes, and the survey, having been correctly executed in accordance with the requirements of law and the regulations of this Bureau, is hereby accepted.

For the Director
John S. Parrish
 Chief Cadastral Surveyor, Nevada

GM

T.35N., R.32E., M.D.M.

JRM