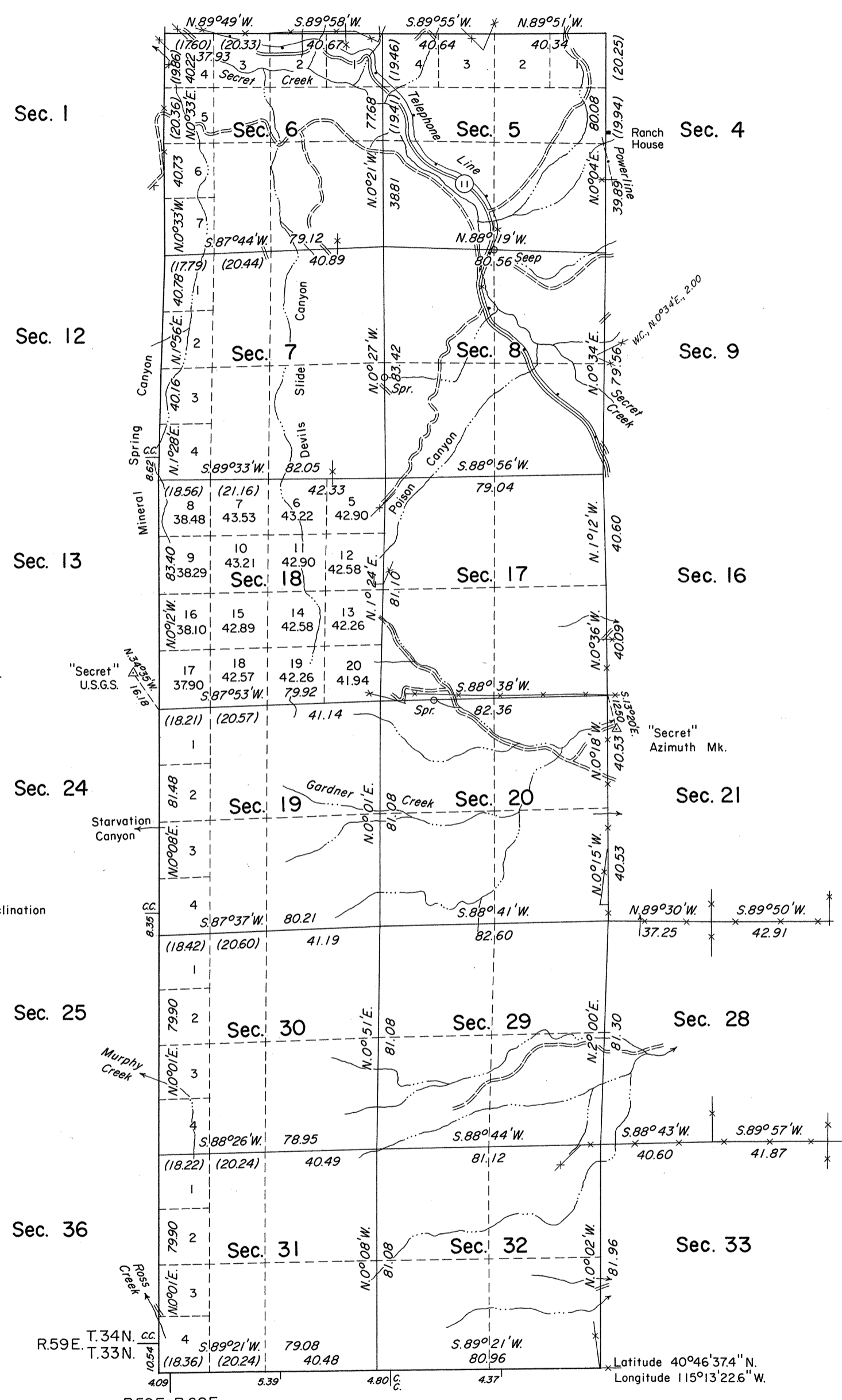


OFFICIALLY FILED
NEVADA STATE OFFICE
10:00 AM 10/16/1972

TOWNSHIP 34 NORTH, RANGE 60 EAST, OF THE MOUNT DIABLO MERIDIAN, NEVADA

DEPENDENT RESURVEY



Surveyed by Mc Clellan and Bridges in 1885

and

Hatch and Eaton in 1869-1870

Sec. 22

History of the earlier surveys is contained in the field notes.

This plat represents a dependent resurvey of a portion of the north boundary, the west boundary and a portion of the subdivisional lines of T. 34 N., R. 60 E., Mount Diablo Meridian, Nevada, designed to restore the corners in their true original locations according to the best available evidence.

Except as indicated hereon, lottings and areas are as shown on the plat approved June 2, 1885.

Survey executed by Donald R. Beck, Cadastral Surveyor, September 15, 1970, to July 19, 1971, pursuant to Special Instructions dated June 18, 1970, for Group No. 471, Nevada.

UNITED STATES DEPARTMENT OF THE INTERIOR
BUREAU OF LAND MANAGEMENT
Washington, D.C. September 21, 1972

This plat is strictly conformable to the approved field notes, and the survey, having been correctly executed in accordance with the requirements of law and the regulations of this Bureau, is hereby accepted.

For the Director

Chief, Division of Cadastral Survey

Scale in Chains
Area Resurveyed 7,616.36 Acres

Resurveyed by T. A. Haigh and J. C. Clark in 1917