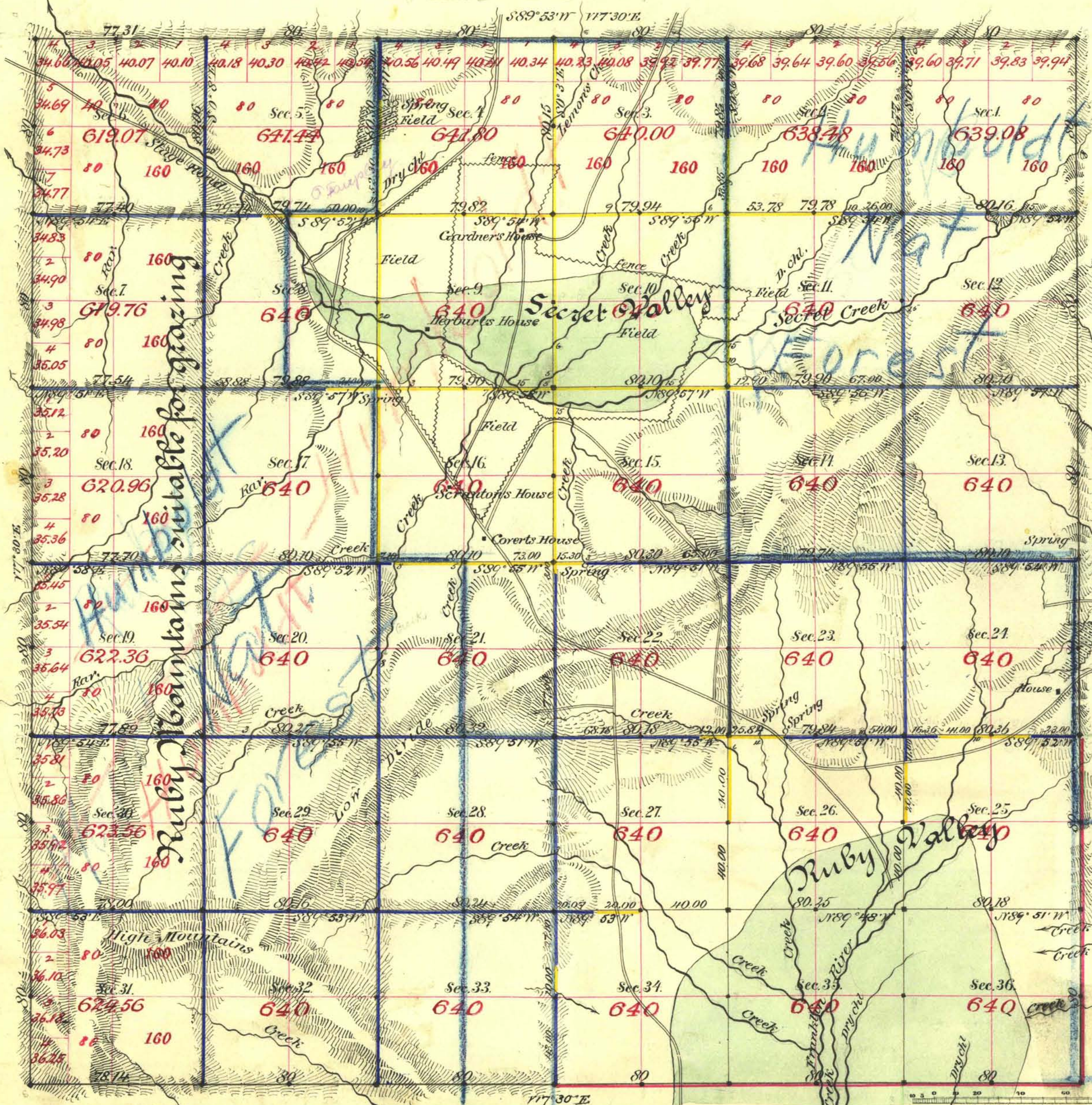


Approved by Com<sup>r</sup> J. L. O. March 25<sup>th</sup> 1896

TOWNSHIP N<sup>o</sup> 34 NORTH RANGE N<sup>o</sup> 60 EAST MOUNT DIABLO MERIDIAN

Resur Cont 199



Resur Cont 199 (For connection see R 59)

Ruby Mountains suitable for grazing

Aggregate Area of Public Land surveyed by  
 Hatch & Eaton Nov. 18<sup>th</sup> 1869 2,720.00 Ac  
 by McClellan & Bridges Nov. 11<sup>th</sup> 1884 20,211.07 "  
 Aggregate 22,931.07 "

Old Work commenced Feb. 23<sup>rd</sup> 1870  
 " " completed " " "  
 New " commenced March 23<sup>rd</sup> 1885  
 " " completed " 29<sup>th</sup> "

Old works approved by C. S. Davis March 20<sup>th</sup> 1870

Subdiv. run with a bar of 17' 30" East

Surveys Designated.	By Whom Surveyed.	Date of Contract.	Amount of Surveys.	When Surveyed.	
By E. bdy red	Hatch & Eaton	Nov. 18 <sup>th</sup> 1869	25 - 00 - 00	1869	32
Subdivs bk.	"	" " "	6 - 00 - 43	February 1870	32
Downship lines black	J. K. Stewart	Nov. 10 <sup>th</sup> 1884	18 - 75 - 45	1884	173
Subdivs yellow	McClellan & Bridges	" 11 <sup>th</sup> "	16 - 12 - 88	March 1885	174
Blue	"	"	38 - 16 - 98	"	"

The above Map of Township No. 34 North of Range No. 60 East  
 Mount Diablo Meridian is strictly conformable to the field notes of the survey  
 thereof on file in this Office, which have been examined and approved.

Surveyor General's Office, Reno, C. C. Canning  
 U.S. Surv. Gen<sup>l</sup> of Nevada.  
 June 2<sup>nd</sup> 1885