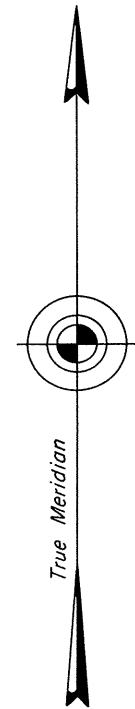
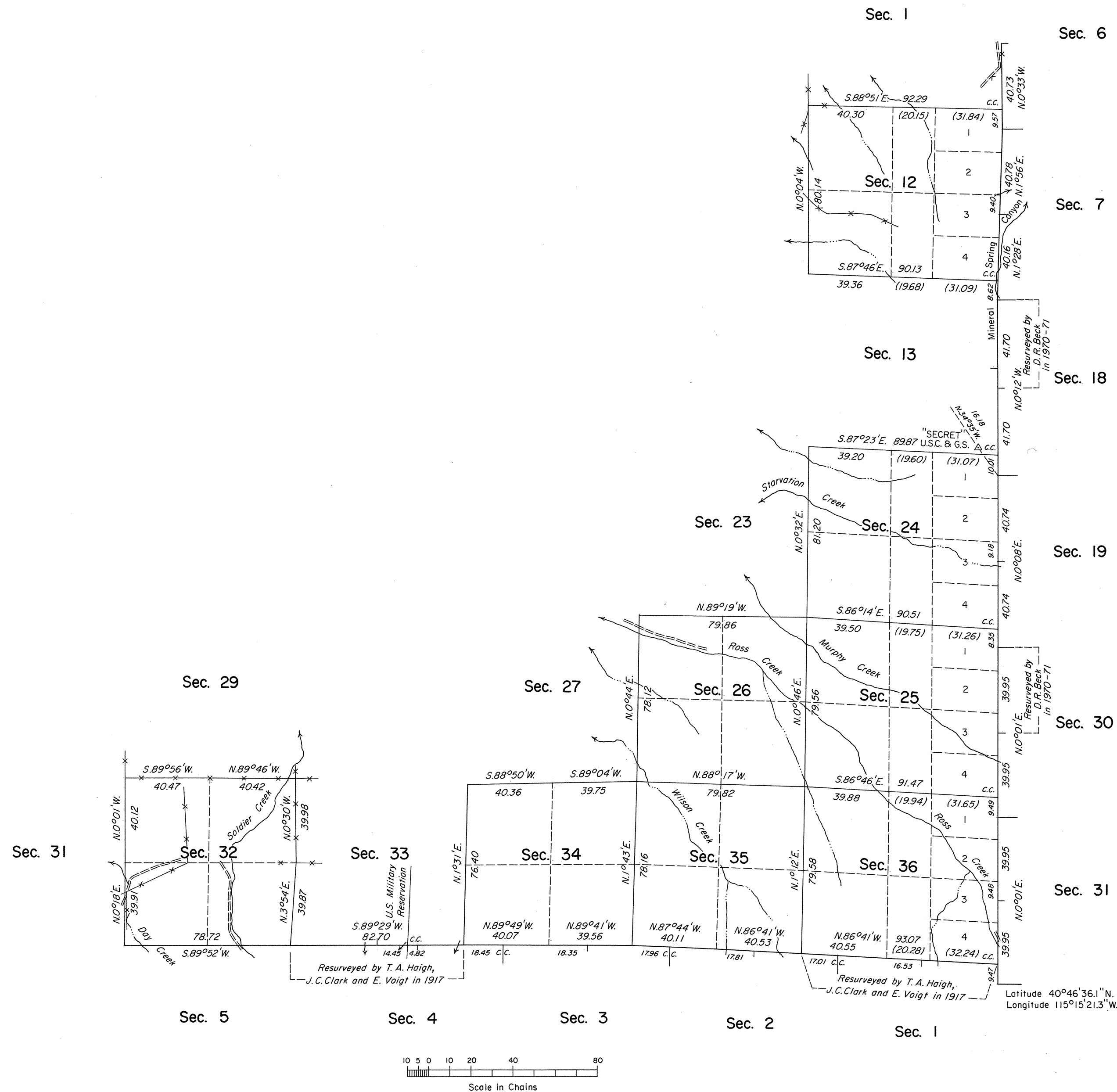


TOWNSHIP 34 NORTH, RANGE 59 EAST, OF THE MOUNT DIABLO MERIDIAN, NEVADA

DEPENDENT RESURVEY



Mean Magnetic Declination
17°E.



History of the earlier surveys is contained in the field notes.

This plat represents a dependent resurvey of a portion of the west boundary of T. 34 N., R. 60 E., and a portion of the south boundary and a portion of the subdivisional lines of T. 34 N., R. 59 E., designed to restore the corners in their original locations according to the best available evidence.

Lottings and areas are as shown on the plats approved April 4, 1891, and December 23, 1893.

Survey executed by Joseph A. Bastian and Stephen R. Lambeth, Cadastral Surveyors, June 15 to July 20, 1981, under Special Instructions dated September 30, 1980, for Group No. 588, Nevada.

UNITED STATES DEPARTMENT OF THE INTERIOR
BUREAU OF LAND MANAGEMENT

Reno, Nevada

July 21, 1982

This plat is strictly conformable to the approved field notes, and the survey having been correctly executed with the requirements of law and the regulations of this Bureau, is hereby accepted.

For the Director

Lael E. Bland

Chief Cadastral Surveyor

Latitude 40°46'36.1"N.
Longitude 115°15'21.3"W.