

TOWNSHIP 34 NORTH, RANGE 55 EAST, OF THE MOUNT DIABLO MERIDIAN, NEVADA  
DEPENDENT RESURVEY

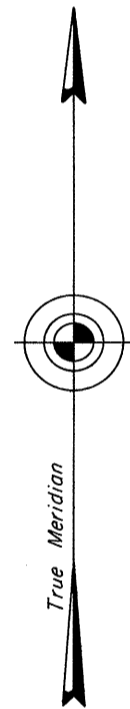
OFFICIALLY FILED  
NEVADA LAND OFFICE  
10:00 AM 2/18/1971

A history of the earlier surveys is contained in the field notes.

This plat represents a dependent resurvey of the subdivisional lines along the north, west, and south boundaries of section 24, T. 34 N., R. 55 E., designed to restore the corners in their original locations according to the best available evidence.

Except as indicated hereon, the areas are as shown on the plat approved July 9, 1869.

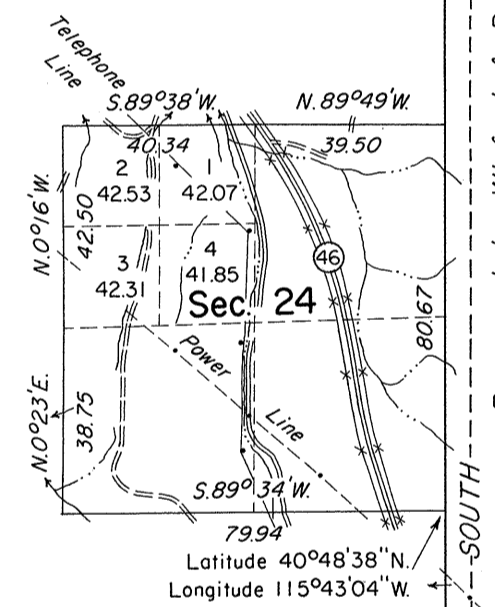
The resurvey was executed by Alburn D. Griffin, Cadastral Surveyor, May 15 to May 16, 1969, under Special Instructions dated March 21, 1969, for Group No. 462, Nevada.



Mean Magnetic Declination  
17 1/2° E.

Surveyed by C.C. Tracy in 1868-69

Sec. 23



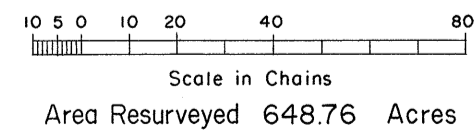
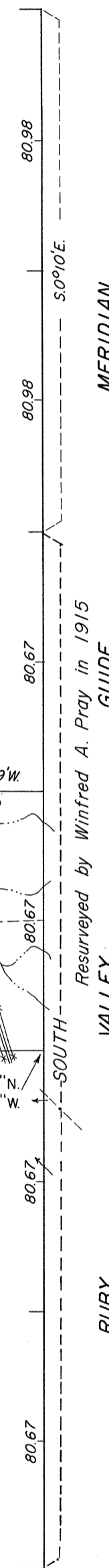
Sec. 1

Sec. 12

Sec. 13

Sec. 25

Sec. 36



UNITED STATES DEPARTMENT OF THE INTERIOR  
BUREAU OF LAND MANAGEMENT  
Washington, D. C. January 28, 1971

This plat is strictly conformable to the approved field notes, and the survey, having been correctly executed in accordance with the requirements of law and the regulations of this Bureau, is hereby accepted.

For the Director

Chief, Division of Cadastral Survey