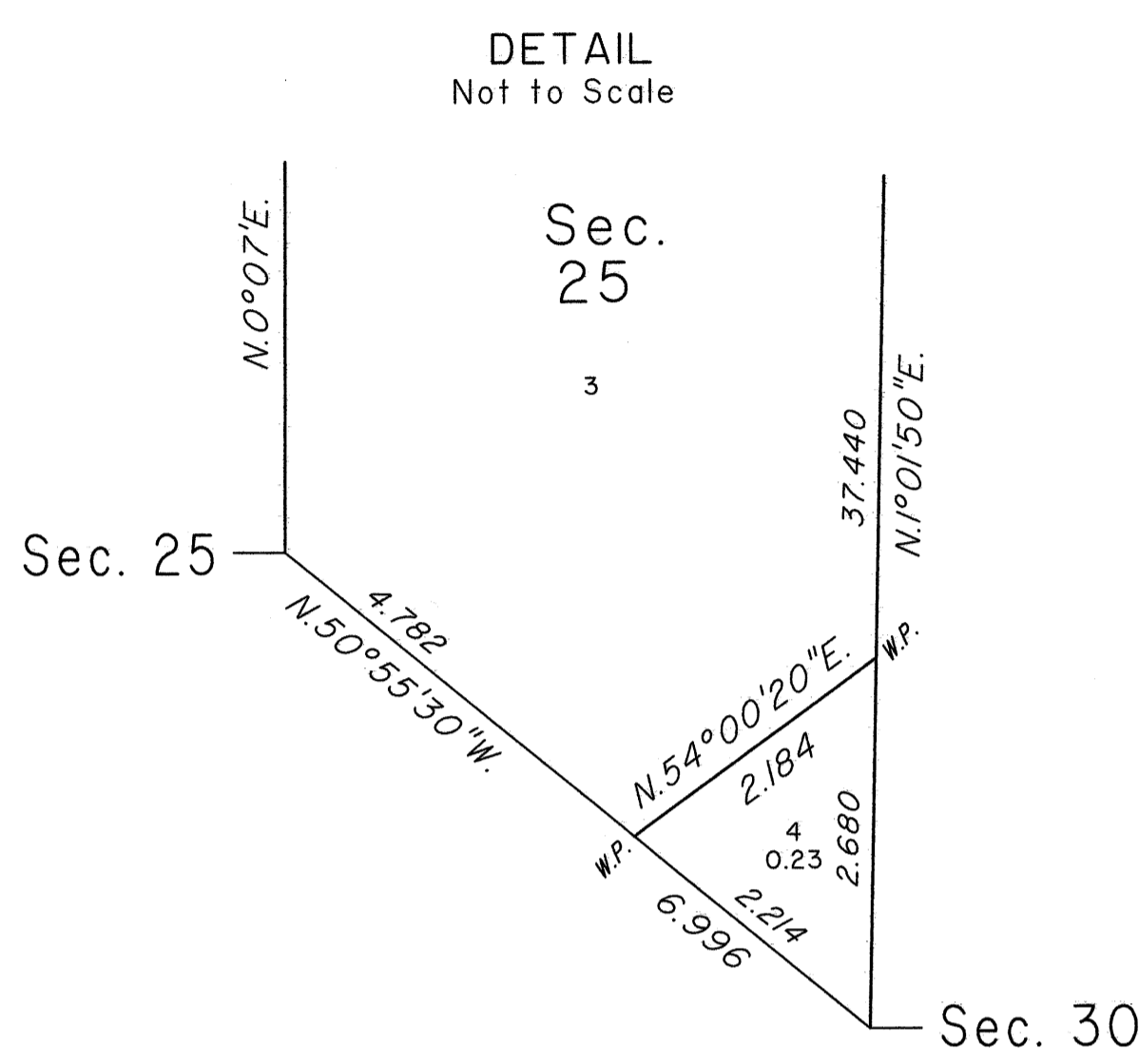
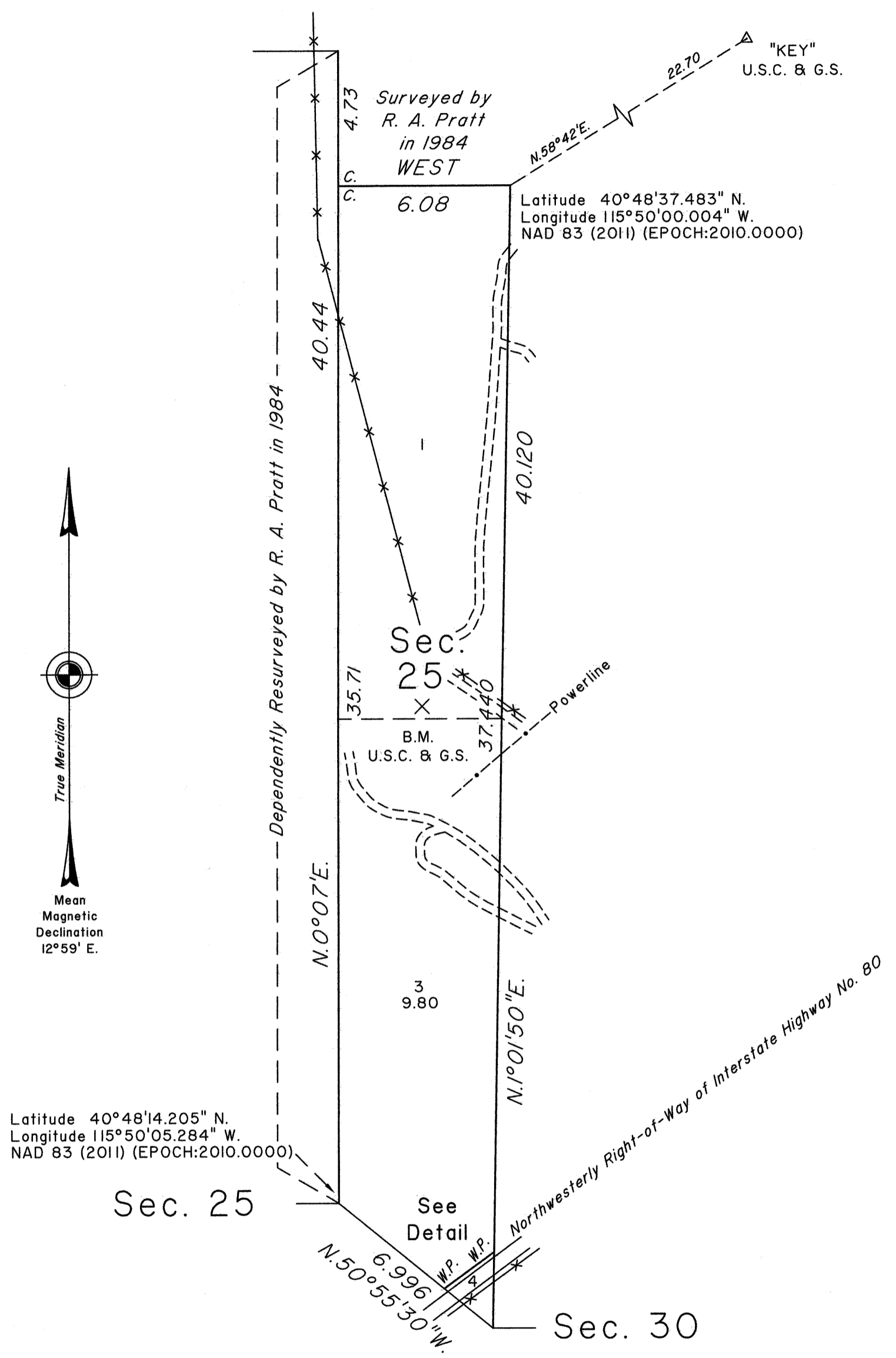


TOWNSHIP 34 NORTH, RANGE 54 1/2 EAST, OF THE MOUNT DIABLO MERIDIAN, NEVADA

DEPENDENT RESURVEY AND METES-AND-BOUNDS SURVEY



A history of surveys is contained in the field notes.

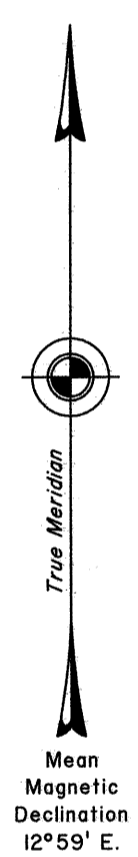
A dependent resurvey of the connecting line between the west 1/4 section corner of section 30, Township 34 North, Range 55 East, and the east 1/4 section corner of section 25, Township 34 North, Range 54 East, was executed concurrently in Township 34 North, Range 54 East under this same Group.

This plat represents the dependent resurvey of a portion of the east boundary and a metes-and-bounds survey in section 25, Township 34 North, Range 54 1/2 East, Mount Diablo Meridian, Nevada.

Except as indicated hereon, the lottings and areas are as shown on the plat accepted on August 21, 1985.

Survey executed by Brandon G. Courtright, Cadastral Surveyor, beginning March 29, 2015 and completed March 31, 2015, pursuant to Special Instructions dated March 25, 2015, for Group No. 943, Nevada.

Latitude 40°48'14.205" N.
Longitude 115°50'05.284" W.
NAD 83 (2011) (EPOCH:2010.0000)



UNITED STATES DEPARTMENT OF THE INTERIOR
BUREAU OF LAND MANAGEMENT

Reno, Nevada July 22, 2015

This plat is strictly conformable to the approved field notes, and the survey, having been correctly executed in accordance with the requirements of law and the regulations of this Bureau, is hereby accepted.

For the Director

Michael O. Humming

Chief Cadastral Surveyor for Nevada

