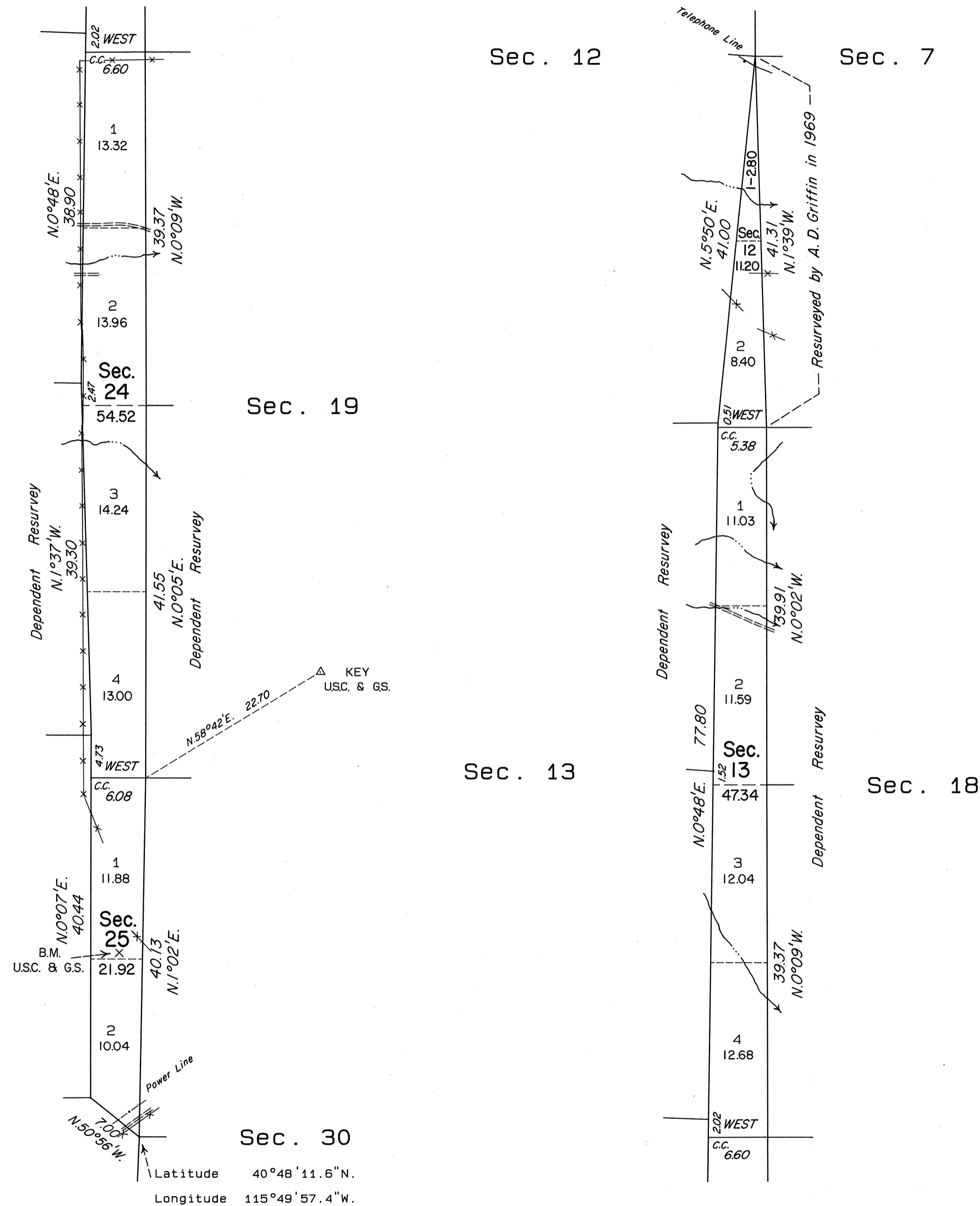
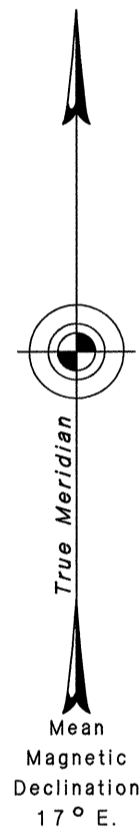


TOWNSHIP 34 NORTH, RANGE 54 1/2 EAST, OF THE MOUNT DIABLO MERIDIAN, NEVADA

OFFICIALLY FILED
NEVADA STATE OFFICE
10:00 A.M. November 12, 1985



History of the earlier surveys is contained in the field notes.

A dependent resurvey of the east and west boundaries was executed concurrently under T.34 N., R.55 E. and T.34 N., R.54 E., respectively, of this same Group.

This plat represents a survey of the subdivisional lines of T. 34 N., R. 54 1/2 E.

Survey executed by Robert A. Pratt, Cadastral Surveyor, beginning August 30, 1984, and completed September 14, 1984, under Special Instructions dated October 11, 1983 and Supplemental Special Instructions dated August 24, 1984, for Group No. 609, Nevada.

UNITED STATES DEPARTMENT OF THE INTERIOR
BUREAU OF LAND MANAGEMENT

Reno, Nevada August 21, 1985

This plat is strictly conformable to the approved field notes, and the survey, having been correctly executed in accordance with the requirements of law and the regulations of this Bureau, is hereby accepted.

For the Director

Lacel E. Bland

Chief Cadastral Surveyor

