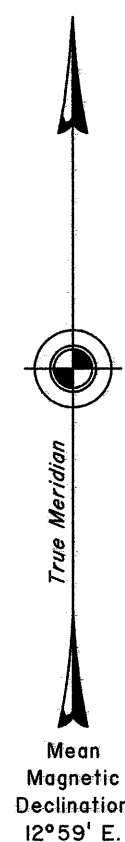
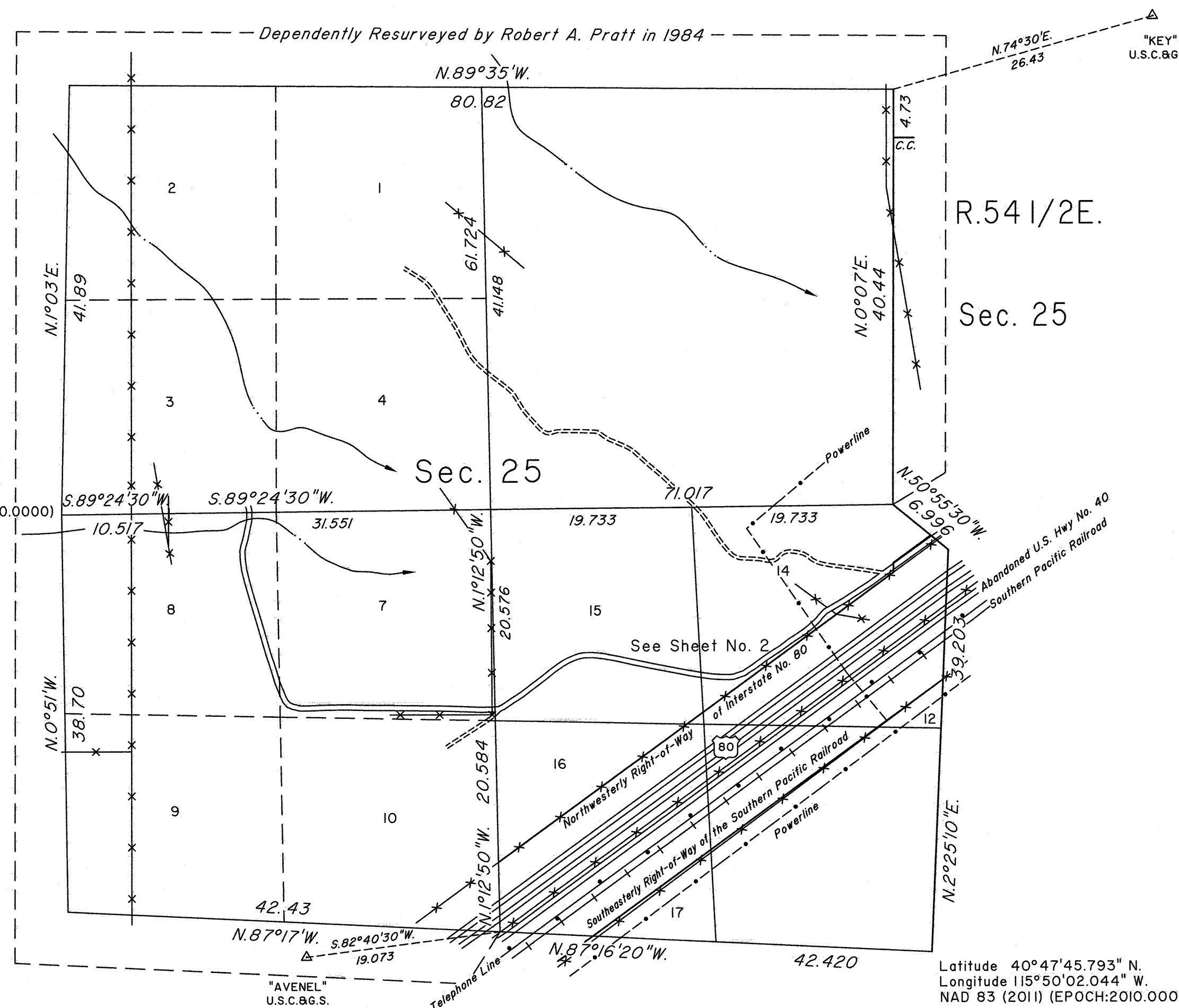


TOWNSHIP 34 NORTH, RANGE 54 EAST, OF THE MOUNT DIABLO MERIDIAN, NEVADA

DEPENDENT RESURVEY, SUBDIVISION AND METES-AND-BOUNDS SURVEYS

OFFICIALLY FILED
NEVADA STATE OFFICE
at 10:00 AM on JUL 24 2015

Latitude 40°48'13.656" N.
Longitude 115°51'15.236" W.
NAD 83 (2011) (EPOCH:2010.0000)



A history of surveys is contained in the field notes.

This plat, in two sheets, represents the dependent resurvey of a portion of the east boundary and a portion of the subdivisional lines designed to restore the corners in their true original locations according to the best available evidence and the subdivision of section 25 and certain metes-and-bounds surveys in section 25, Township 34 North, Range 54 East, Mount Diablo Meridian, Nevada.

Except as indicated hereon, lottings and areas area as shown on the plat accepted on August 21, 1985.

Survey executed by Brandon G. Courtright, Cadastral Surveyor, beginning March 29, 2015 and completed March 31, 2015, pursuant to Special Instructions dated March 25, 2015, for Group No. 943, Nevada.

UNITED STATES DEPARTMENT OF THE INTERIOR
BUREAU OF LAND MANAGEMENT

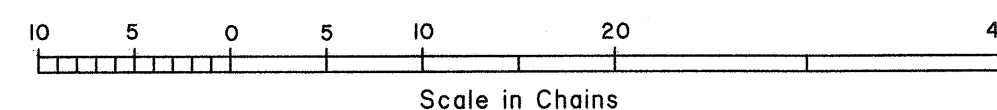
Reno, Nevada July 22, 2015

This plat is strictly conformable to the approved field notes, and the survey, having been correctly executed in accordance with the requirements of law and the regulations of this Bureau, is hereby accepted.

For the Director

Michael O. Hammering

Chief Cadastral Surveyor for Nevada



T.34N., R.54E., M.D.M.