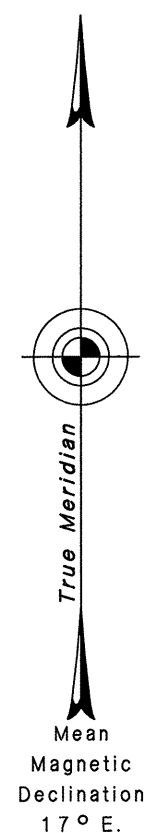


TOWNSHIP 34 NORTH, RANGE 54 EAST, OF THE MOUNT DIABLO MERIDIAN, NEVADA

DEPENDENT RESURVEY

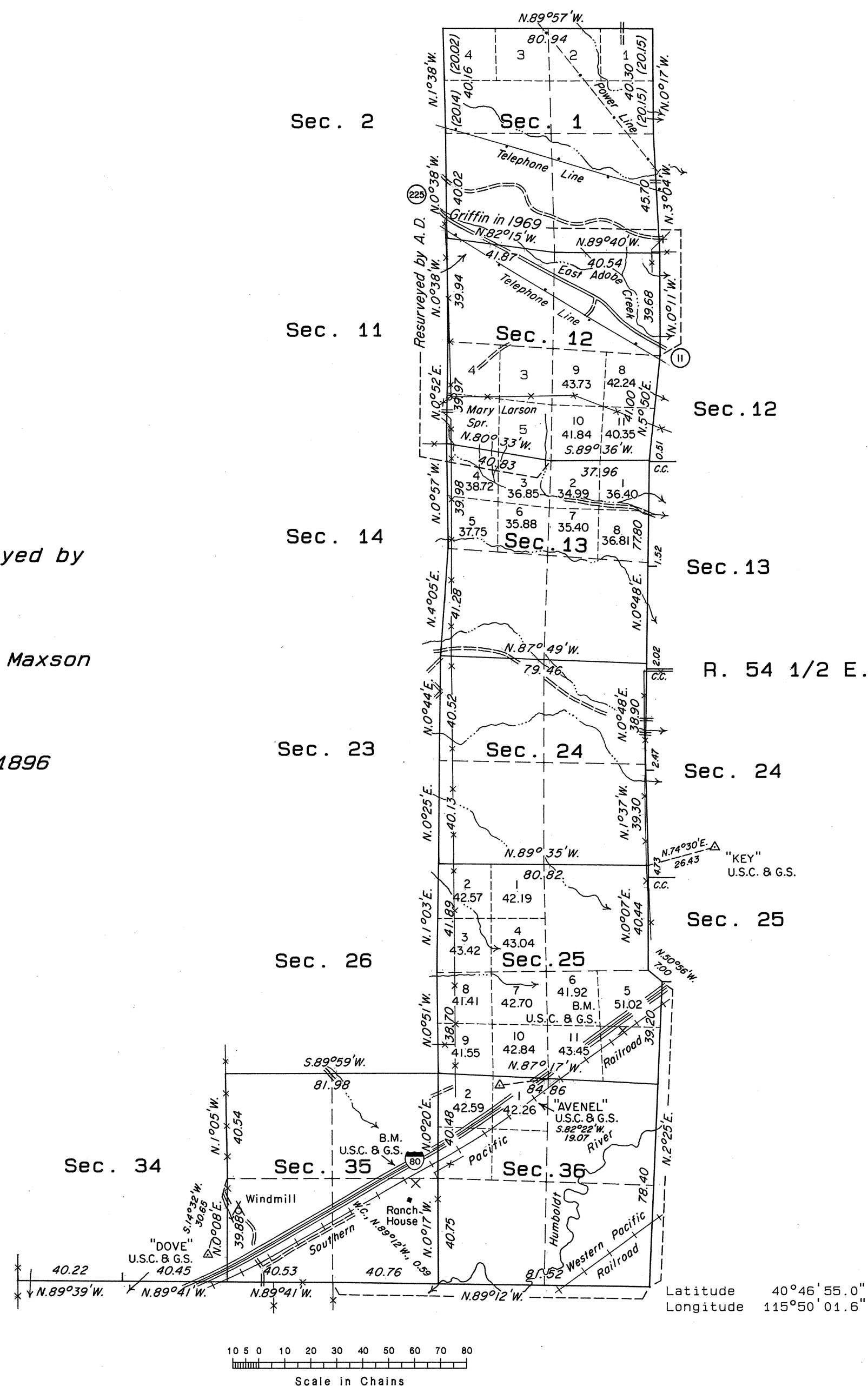
OFFICIALLY FILED
NEVADA STATE OFFICE
10:00 P.M. September 9, 1985



Surveyed by

H. B. Maxson

in 1896



History of the earlier surveys is contained in the field notes.

A dependent resurvey of a portion of the east boundary was executed concurrently under T. 34 N., R. 55 E., of this same Group.

This plat represents a dependent resurvey of a portion of the south, east and north boundaries and a portion of the subdivisional lines of T. 34 N., R. 54 E., designed to restore the corners in their true original locations according to the best available evidence.

Lottings and areas, except as indicated hereon, are as shown on plats approved September 6, 1878, October 28, 1896, March 20, 1909 and June 22, 1972.

Survey executed by Robert A. Pratt, Cadastral Surveyor, beginning August 30, 1984, and completed September 14, 1984, under Special Instructions dated October 11, 1983 and Supplemental Special Instructions dated August 24, 1984, for Group No. 609, Nevada.

Lottings and areas shown hereon in section 25 pertain to Federal Estates only.

UNITED STATES DEPARTMENT OF THE INTERIOR
BUREAU OF LAND MANAGEMENT

Reno, Nevada August 21, 1985

This plat is strictly conformable to the approved field notes, and the survey, having been correctly executed in accordance with the requirements of law and the regulations of this Bureau, is hereby accepted.

For the Director

Larel E. Bland

Chief Cadastral Surveyor

T. 34 N., R. 54 E., M.D.M.