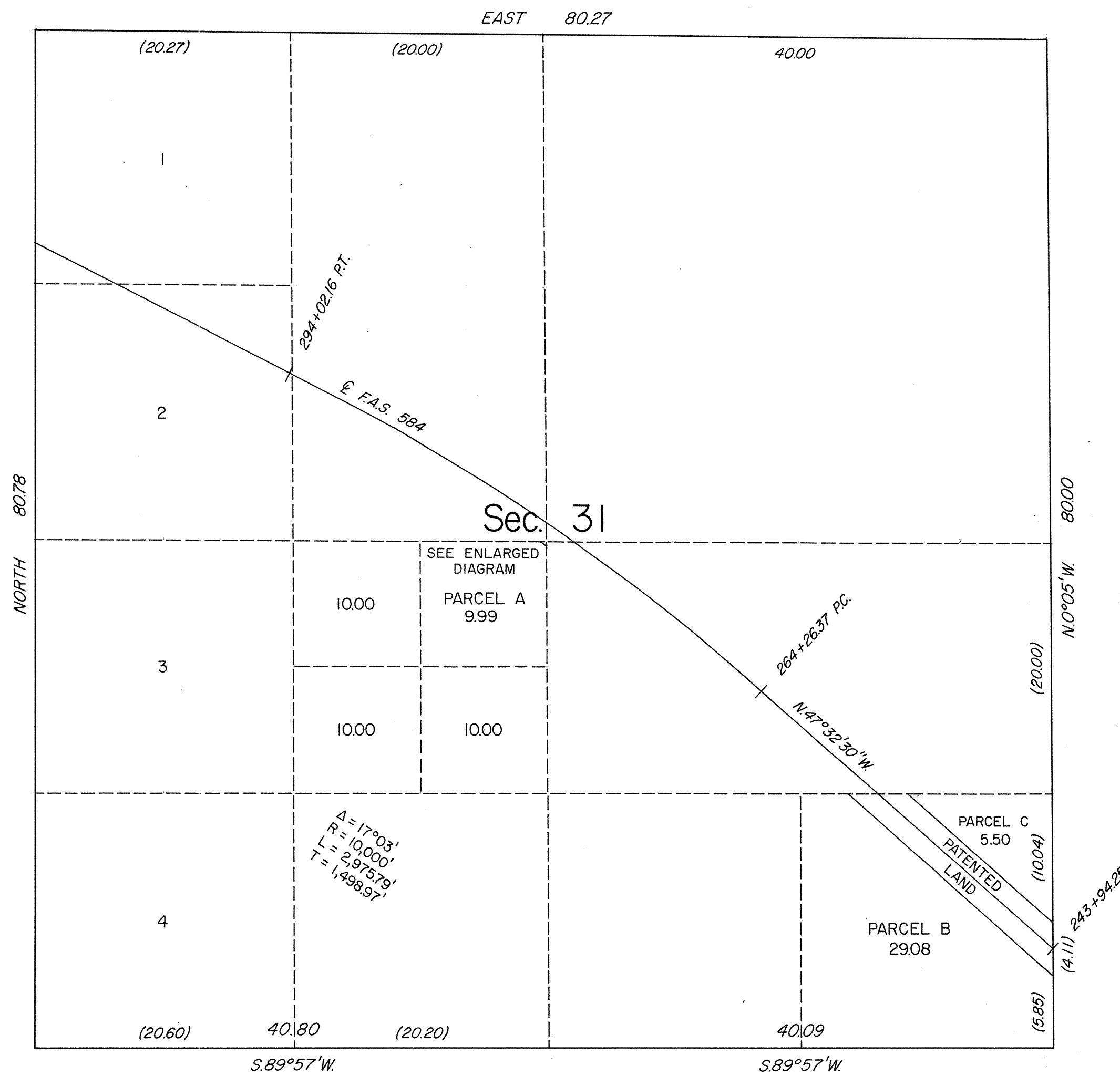
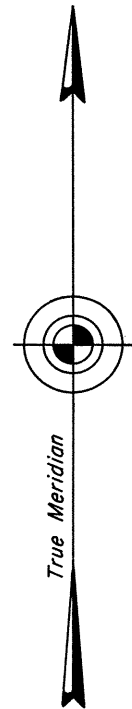
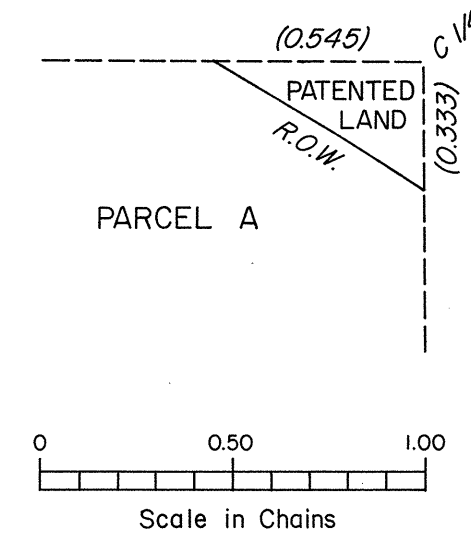


TOWNSHIP 34 NORTH, RANGE 52 EAST, OF THE MOUNT DIABLO MERIDIAN, NEVADA
SUPPLEMENTAL PLAT OF SECTION 31

OFFICIALLY FILED
NEVADA STATE OFFICE
10:00 A.M. JANUARY 5, 1984

Q. F.A.S. 584

ENLARGED DIAGRAM



This plat, showing a subdivision of the SE 1/4 of the SE 1/4 and NE 1/4 of the SW 1/4 of sec. 31, T. 34 N., R. 52 E., Mount Diablo Meridian, Nevada, is based upon the plat of T. 34 N., R. 52 E., approved December 23, 1893, the plats of T. 34 N., R. 51 E., and T. 33 N., R. 52 E., approved October 18, 1921, the Nevada Department of Highways right-of-way application dated April 14, 1966, and a deed dated January 10, 1966, recorded in Book 76, page 144 of the records of Elko County, Nevada, conveying land to the State of Nevada.

UNITED STATES DEPARTMENT OF THE INTERIOR
BUREAU OF LAND MANAGEMENT

Reno, Nevada December 16, 1983

This plat, showing amended lottings, is based upon the official records and having been correctly prepared in accordance with the regulations of this Bureau, is hereby accepted.

For the Director

Lacel E. Bland

Acting Deputy State Director, Operations