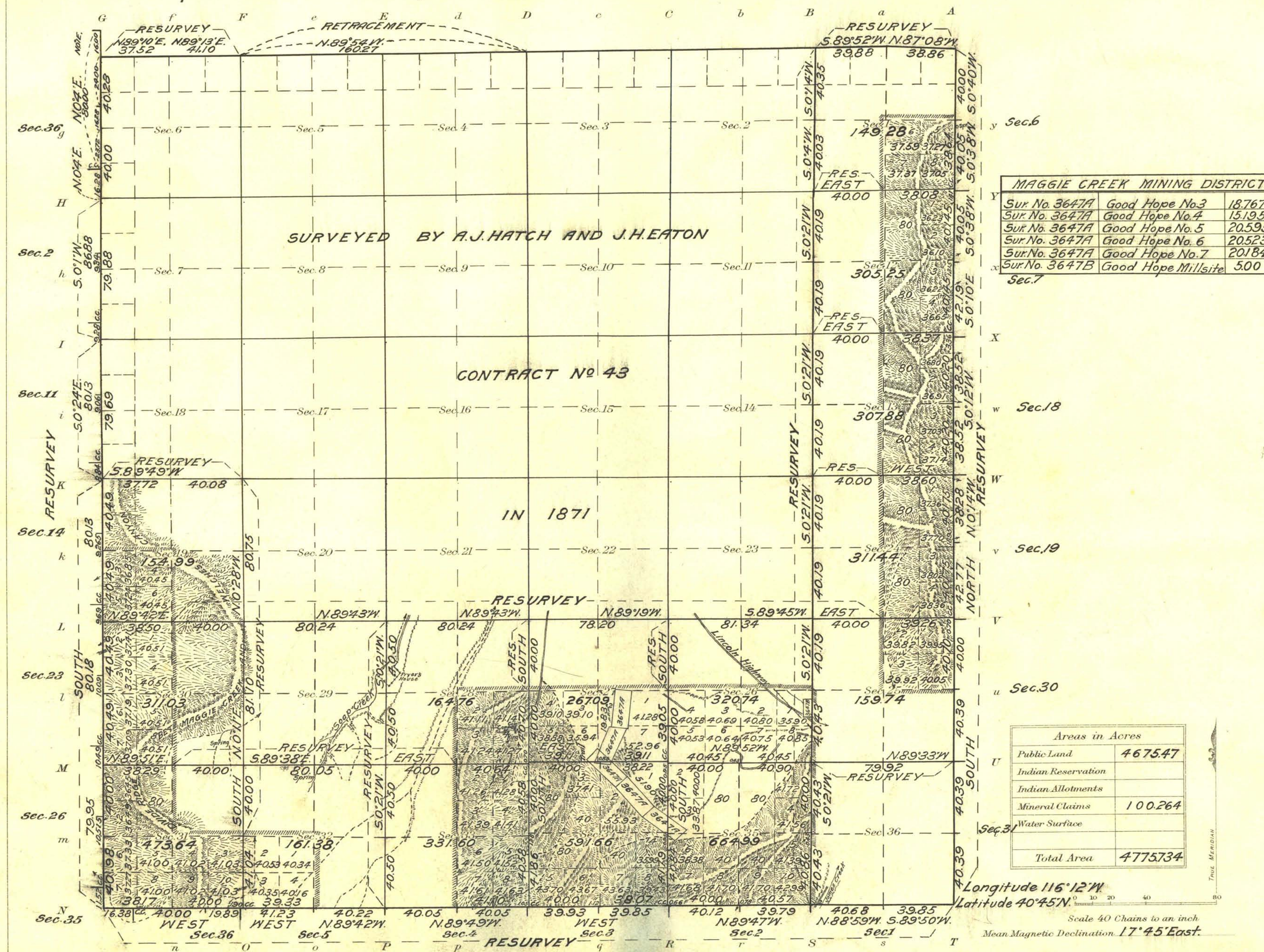


Township No. 34 North Range No. 51 East Mt. Diablo Meridian, Nevada.



MAGGIE CREEK MINING DISTRICT		
Sur. No. 3647A	Good Hope No. 3	18.767
Sur. No. 3647A	Good Hope No. 4	15.195
Sur. No. 3647A	Good Hope No. 5	20.595
Sur. No. 3647A	Good Hope No. 6	20.523
Sur. No. 3647A	Good Hope No. 7	20.184
Sur. No. 3647B	Good Hope Mill site	5.00

Areas in Acres	
Public Land	4675.47
Indian Reservation	
Indian Allotments	
Mineral Claims	100.264
Water Surface	
<b>Total Area</b>	<b>4775.734</b>

Surveys Designated	By Whom Surveyed	Group No.	Date of Instructions	Amount of Surveys			When Surveyed	
				Mls.	chs.	fts.	Begun	Completed
N.S.E. and W. Edrs. Resur.	Scott P. Stewart	27	Feb. 14, 1914	19	79	77	Aug. 9, 1914	Aug. 26, 1914
Subdivision Resur.	Ruban W. Riley	"	and	22	04	64	Aug. 13, 1914	June 4, 1916
Subdivision	"	"	Mar. 23, 1914	8	74	60	Aug. 14, 1914	June 4, 1916
Corrections	Scott P. Stewart	"	April 6, 1916					June 4, 1916
Corrections	J.C. Clark	"	Feb. 11, 1918					June 6, 1918

The above map of Township No. 34 North Range No. 51 East of the Mt. Diablo Meridian Nevada is strictly conformable to the field notes of the survey thereof on file in this office, which have been examined and approved

U. S. Surveyor General's Office.  
*J. C. Belder*  
 Surveyor General.  
 Reno Nevada, October 18, 1921.