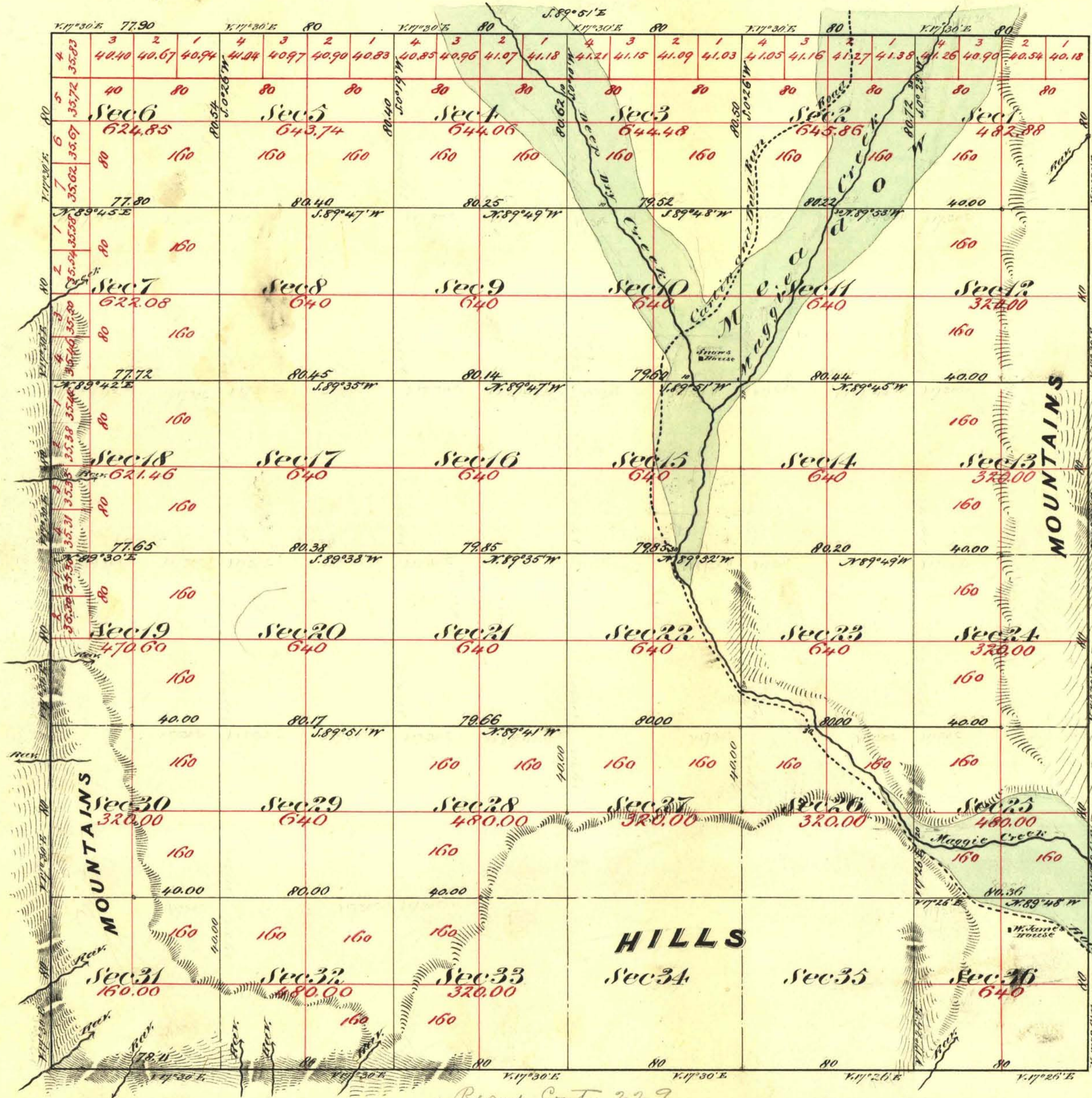


Township N^o 34 North

Range N^o 5 East

Mount Diablo Meridian



Aggregate Area of Public Land Surveyed 18,200.01 Acres
 Estimated " " Mountains (unsurveyed) 4,758.52 "
 Aggregate 22,958.53 "

Commenced February 24th 1871
 Completed March 2nd 1871

Subdivision Lines not otherwise noted run with a variation of 17^o 30' E

The above map of Township N34 North Range N5 East Mount Diablo Meridian is strictly conformable to the field notes of the survey thereof on file in this office, which have been examined and approved by the U.S. Surveyor General's Office
 Virginia City Nevada
 May 10th 1871

Survey Designation	By Whom Surveyed	Date of Contract	Amount of Survey	When Surveyed	N ^o Cont.
Township Lines	A. Hatch & H. Eaton	February 6 th 1871	23 76 01	1871	43
Subdivision Lines	" " " "	" " "	50 77 44	Feb 7 th March 1871	"

E. S. Davis
 U.S. Surveyor General Nevada