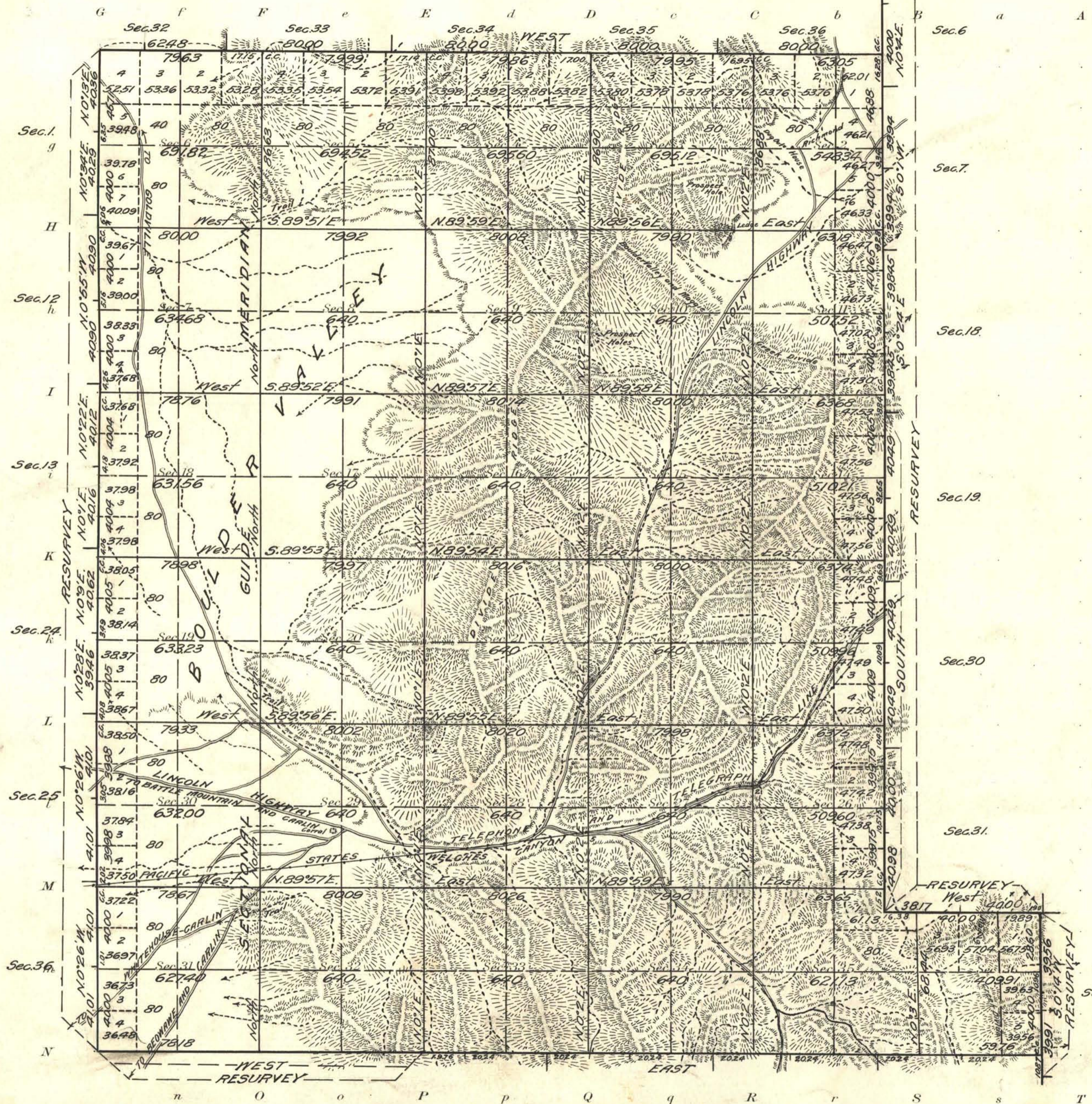


Accepted May 2, 1922.

Township N^o 34 North Range N^o 50 East Mt Diablo Meridian, Nevada



NOTE
 Surveyor reports indications of mineral in Secs. 2, 3 and 10.

Areas in Acres	
Public Land	19152.60
Indian Reservation	
Indian Allotments	
Mineral Claims	
Water Surface	
Total Area	19152.60

Scale 40 Chains to an inch

Mean Magnetic Declination 17°40' E.
 Latitude 40°44' N.
 Longitude 116°18' W.

Surveys Designated	By Whom Surveyed	Group No.	Date of Instructions	Amount of Surveys			When Surveyed	
				Mls.	chs.	lks.	Began	Completed
North Boundary	Scott P. Stewart and Robert M. Riley	27	Mar. 23, 1914	4	62	48	Sept. 17, 1914	Sept. 16, 1914
East Boundary Res.	"	"	Feb. 14, 1914	8	00	46	Aug. 12, 1914	June 14, 1916
South Boundary Res.	"	"	"	1	78	18	Oct. 2, 1914	Oct. 2, 1914
South Boundary	"	"	"	3	59	76	Oct. 5, 1914	Oct. 6, 1914
West Boundary Res.	"	"	"	6	06	85	Oct. 1, 1914	Oct. 19, 1914
Subdivision	"	"	"	49	10	12	Oct. 4, 1914	Oct. 19, 1914
Corrections	Scott P. Stewart	"	Apr. 6, 1916					June 4, 1916

The above map of Township No. 34 North Range No. 50 East of the Mt. Diablo Meridian Nevada is strictly conformable to the field notes of the survey thereof on file in this office, which have been examined and approved

U. S. Surveyor General's Office.
 Reno, Nevada, October 18, 1921

J. E. Helder
 Surveyor General.