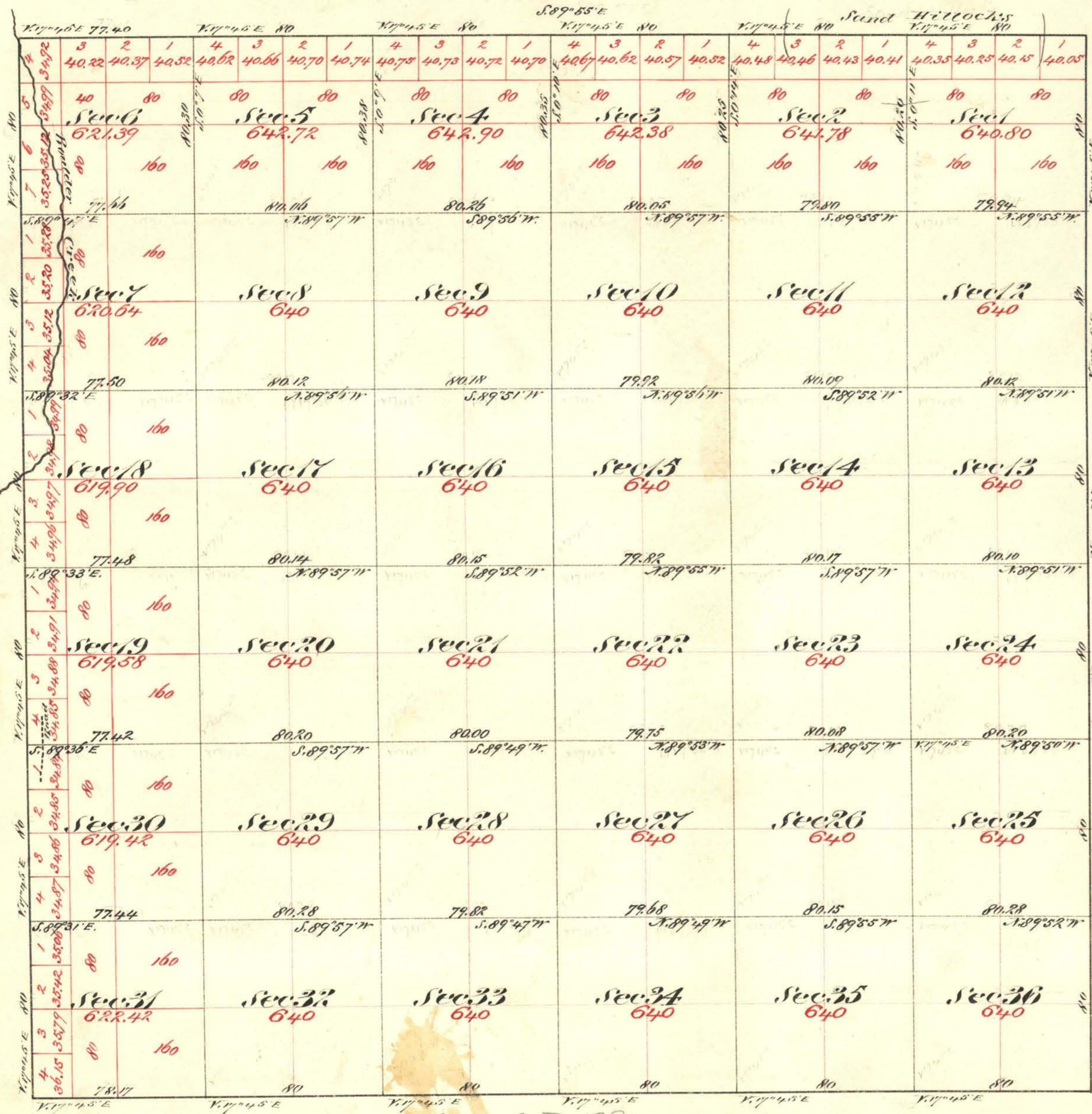


Township N^o 34 North

Range N^o 49 East

Mount Diablo Meridian



Aggregate Area of Public Land 22,733.93 Acres

Commenced December 10th 1872
Completed " 17th 1872

Subdivision lines not otherwise noted run with a variation of 17' 45" E

Result Court 197

Surveys Designated	By Whom Surveyed	Date of Contain.	Acres of Group	When Surveyed	7 th Cont.
West Boundary of Township	A. H. Hatch & H. Eaton	September 3 rd 1869	6 00 00	1869	30
West of Township lines	A. H. Hatch, H. Eaton & H. Samples	Nov 15 th 1872	17 75 57	1872	54
Subdivision lines	" " " " " "	" " "	59 70 34	Dec 1872	"

The above map of Township N34 North Range N49 East Mount Diablo Meridian is strictly conformable to the field notes of the surveys thereof on file in this office, which have been examined and approved
U. S. Surveyor General's Office
Virginia City, Nevada
February 15th 1873

E. S. Davis

T 34 N. R 49 E. U. S. Surveyor General Nevada