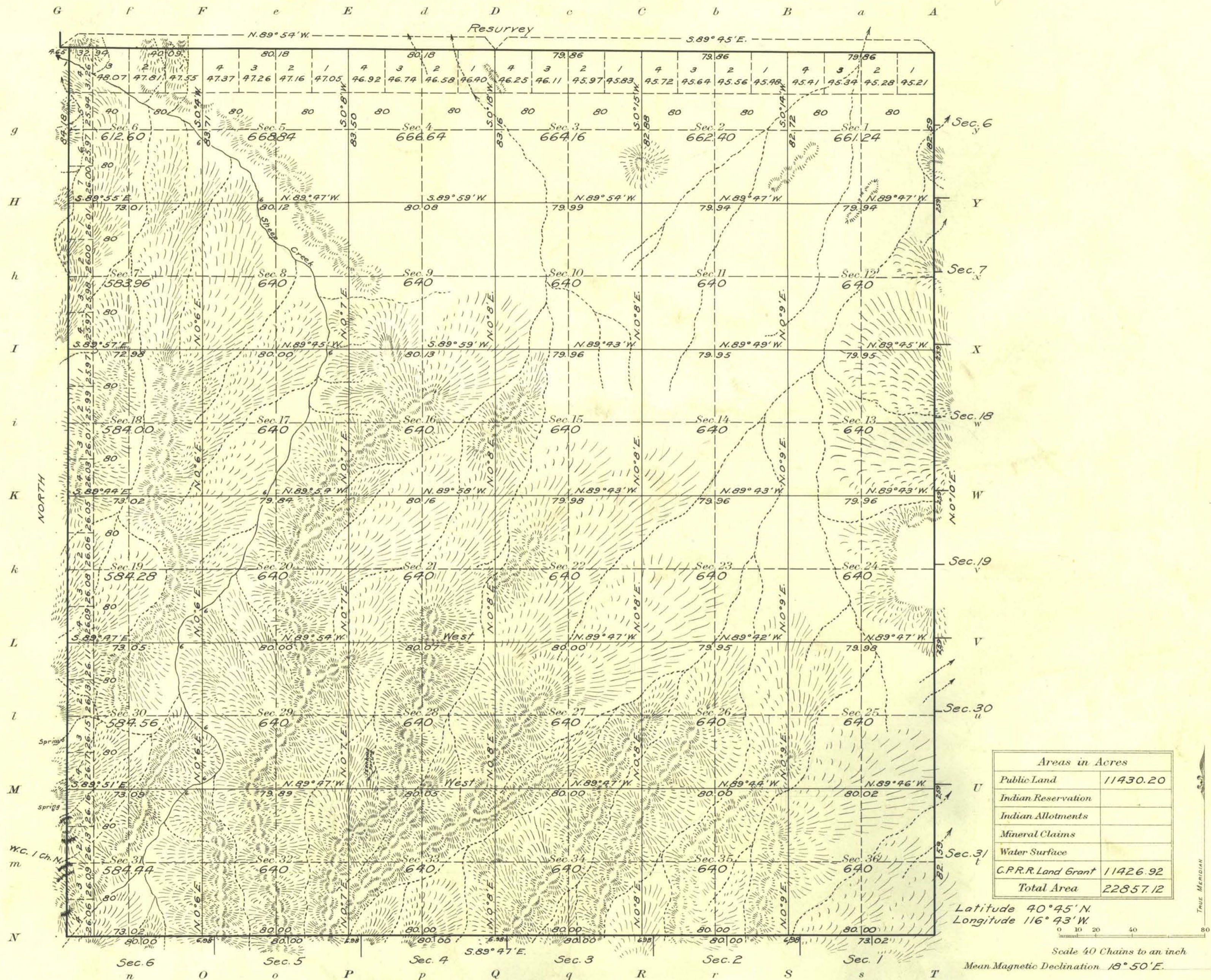


Township No. 34 North Range No. 46 East Mt. Diablo Meridian, Nevada



Surveys Designated	By Whom Surveyed	Group No.	Amount of Surveys			When Surveyed		
			No.	Mts.	chs.	lks.	Began	Completed
N. Boundary (res.)	Winfred A. Pray	24	2	79	58		May 25, 1914	May 25, 1914
"	Guy Redwine and John G. Collins	"	2	78	04		Oct. 22, 1913	Oct. 22, 1913
E. Boundary	Winfred A. Pray	"	6	02	59		May 26, 1914	May 26, 1914
S. "	"	"	5	73	02		" 7, "	" 7, "
W. "	G. Redwine, J. G. Collins and W. A. Pray	"	6	04	18		Oct. 4, 1913	Oct. 6, 1913
Subdivisions	Winfred A. Pray	"	59	61	04		May 27, 1914	June 8, 1914

The above map of Township No. 34 North Range No. 46 East of the Mt. Diablo Meridian Nevada is strictly conformable to the field notes of the survey thereof on file in this office, which have been examined and approved

U. S. Surveyor General's Office.
Reno, Nevada January 29, 1916

John B. Sullivan
Surveyor General.