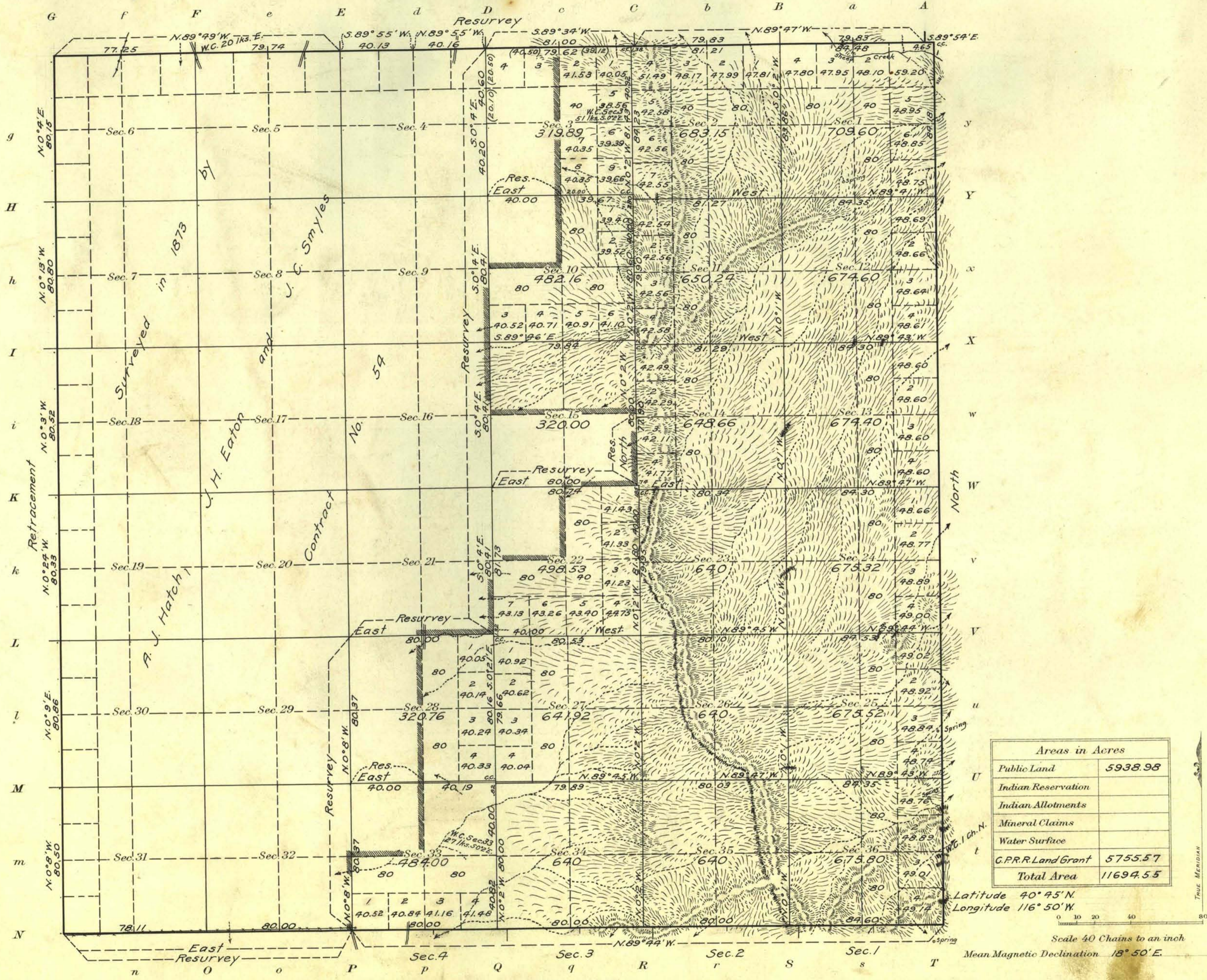


Township No. 34 North Range No. 45 East Mt. Diablo Meridian, Nevada



Surveys Designated	By Whom Surveyed	Group		Amount of Surveys			When Surveyed	
		No.	Date of Instructions	Mls.	chs.	lks.	Began	Completed
N. Boundary (res.)	Guy Redwine, John E. Collins & Winced R. Frey	24	Feb. 25, 1913	5	77	94	Oct. 3, 1913	Oct. 3, 1913
E. "	"	"	"	6	4	18	" 6, "	" 6, "
S. " (res.)	"	"	"	1	78	11	" 1, "	" 1, "
S. "	"	"	"	4	4	60	" 2, "	" 2, "
W. " (ref.)	Guy Redwine, J. G. Collins	"	"	6	3	16	" 1, "	" 1, "
Subdivisions	Guy Redwine, John E. Collins & Winced R. Frey	"	"	27	74	39	" 11, "	Aug. 28, 1914
" (res.)	"	"	"	9	42	77	" 6, "	" "

The above map of Township No. 34 North Range No. 45 East of the Mt. Diablo Meridian Nevada is strictly conformable to the field notes of the survey thereof on file in this office, which have been examined and approved

U. S. Surveyor General's Office.
Reno, Nevada January 29, 1916

John B. Sullivan
Surveyor General.