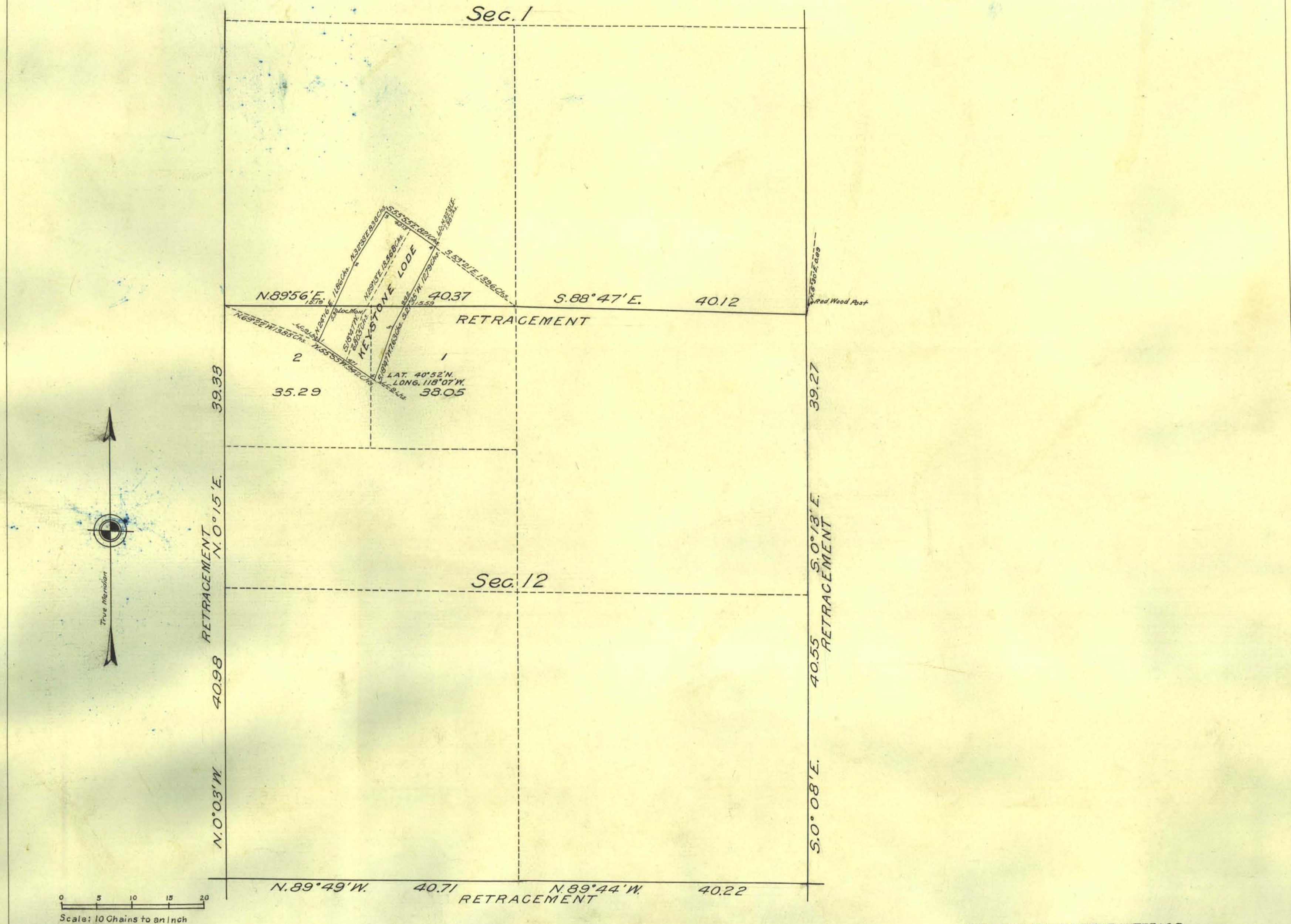


Supplemental Plat of Section 12 of Township N^o 34 North Range N^o 34 East M^t Diablo Meridian Nevada



LINES DESIGNATED	BY WHOM SURVEYED	GROUP NO	DATE	MILEAGE		WHEN SURVEYED	
				MLS.	CHS.	BEGUN	COMPLETED
Bdrs of Sec. Retr.	Carl S Swanholm	123	Dec 10 1924	4	255	Oct 15, 1925	Oct 16, 1925
Bdrs of Claim	" " "	"	" " "	0	5830	Oct 17, 1925	Oct 17, 1925
Miscellaneous	" " "	"	" " "	0	2039	" " "	" " "
Connections	" " "	"	" " "	0	2937	" " "	" " "

Office of U.S. Supervisor of Surveys
 Denver Colorado, October 25, 1926.
 The above supplemental plat of Section 12, Township No. 34 North Range No. 34 East of the Mount Diablo Meridian Nevada is strictly conformable to the field notes of the survey there of which have been examined and approved

Samuel Johnson
 U.S. Supervisor of Surveys

DEPARTMENT OF THE INTERIOR
 GENERAL LAND OFFICE
 Washington, D.C., December 14, 1926.
 The survey represented by this plat having been correctly executed in accordance with the requirements of law and the regulations of this office is hereby accepted.

Thorstovall
 Assistant Commissioner

Jan 1930
 T34 N. R. 34 E.