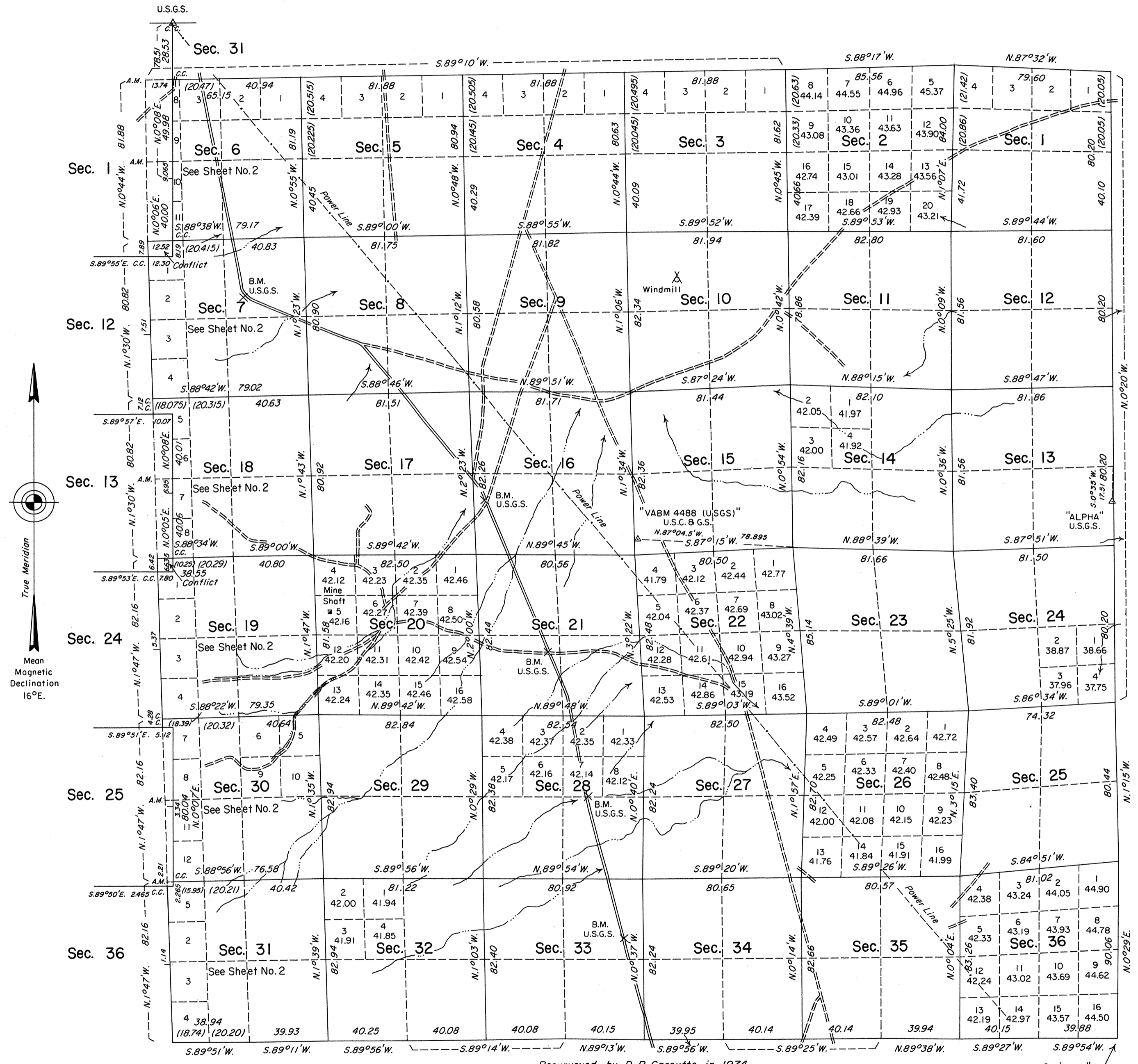


TOWNSHIP 34 NORTH, RANGE 32 EAST, OF THE MOUNT DIABLO MERIDIAN, NEVADA
DEPENDENT RESURVEY



History of the earlier surveys is contained in the field notes.

The west boundary of T. 34 N., R. 33 E., and the east boundary of T. 34 N., R. 31 E., were dependently resurveyed concurrently under this same Group.

This plat, in 2 sheets, represents the dependent resurvey of the west and north boundaries and the subdivisional lines of T. 34 N., R. 32 E., Mount Diablo Meridian, Nevada, designed to restore the corners in their true original locations according to the best available evidence.

Lotting and areas, except as indicated hereon, are as shown on the plat approved January 3, 1876.

Lot 5 in section 31 shown hereon pertain to Federal Estates only.

Survey executed by Stephen R. Lambeth, Cadastral Surveyor, beginning October 21, 1987, and completed September 26, 1990, under Special Instructions dated September 4, 1987, and the Supplemental Special Instructions dated June 16, 1988, for Group No. 654, Nevada.

UNITED STATES DEPARTMENT OF THE INTERIOR
BUREAU OF LAND MANAGEMENT

Reno, Nevada September 30, 1991

This plat is strictly conformable to the approved field notes, and the survey, having been correctly executed in accordance with the requirements of law and the regulations of this Bureau, is hereby accepted.

For the Director
John S. Parrish
Chief Cadastral Surveyor, Nevada

Resurveyed by D.R. Garoutte in 1974

Latitude 40°45'44.65"N.
Longitude 118°18'46.86"W.
NAD 27

