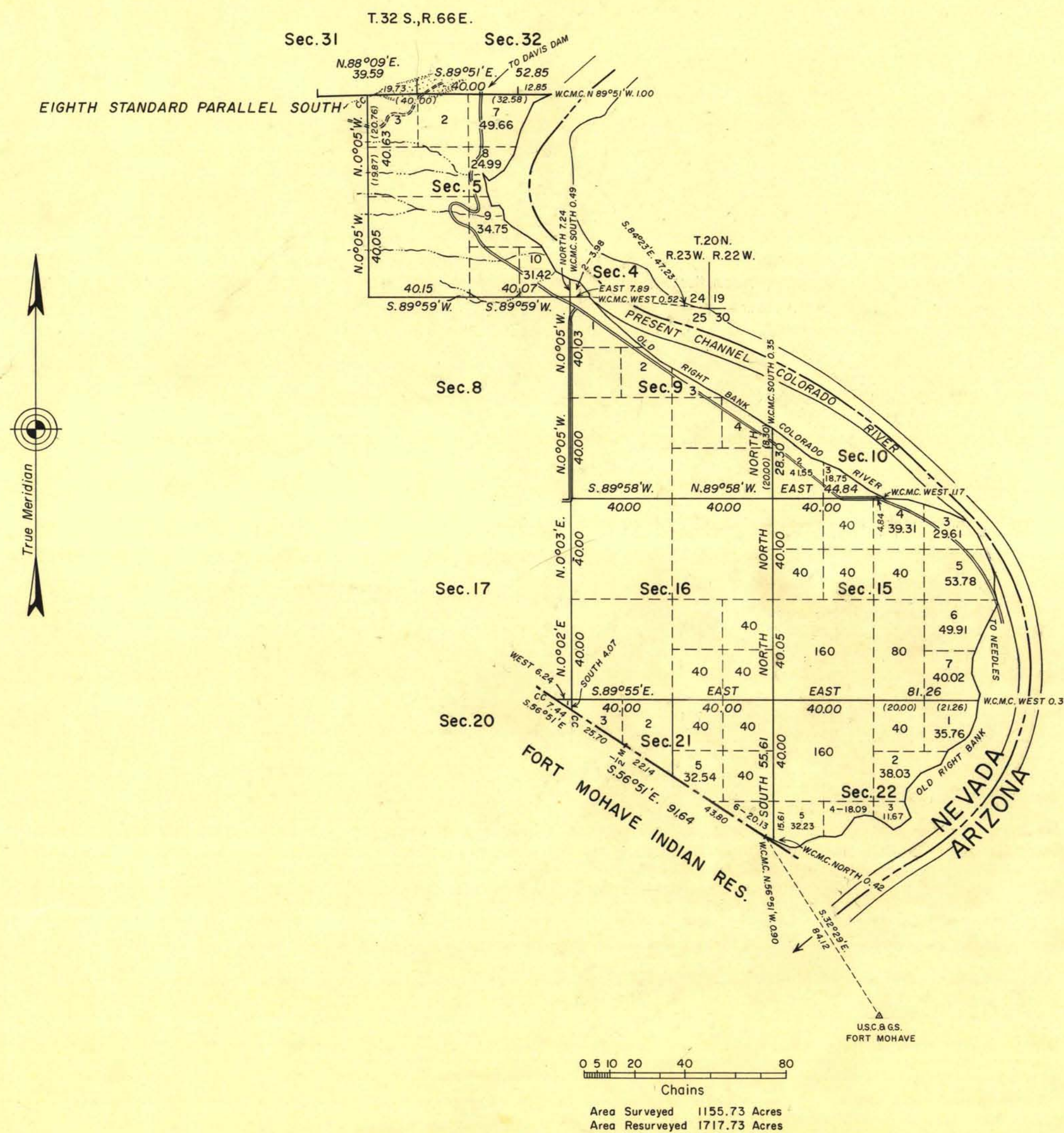


TOWNSHIP 33 SOUTH, RANGE 66 EAST OF THE MOUNT DIABLO MERIDIAN, NEVADA.

LIMITED DEPENDENT RESURVEY AND ACCRETION SURVEY



This plat represents a retracement and re-establishment of a portion of the north-easterly boundary of the Fort Mohave Indian Reservation and of a portion of the subdivisional lines designed to restore the corners thereof in their original positions according to the best available evidence; and, the survey of accreted lands.

The township was subdivided in 1932 by Carl S. Swanholm, Cadastral Engineer, under Group 157, as shown upon the plat accepted February 3, 1940. A portion of the north boundary, being the Eighth Standard Parallel South, was resurveyed concurrently under this group. Except as new areas are shown hereon, the lottings and areas are as shown upon the original plat referred to.

In the late 1950's the Colorado River was rechannelized and confined within this vicinity. The position of the Arizona-Nevada state boundary, in the river's present channel, is shown in accordance with P.L. 87-50, 87th Congress, June 16, 1961.

These surveys were executed by Eldon W. Sibley, Cadastral Surveyor, from November 27 to December 8, 1961, pursuant to special instructions dated October 8, 1961, for Group 395, Nevada.

UNITED STATES DEPARTMENT OF THE INTERIOR
BUREAU OF LAND MANAGEMENT
Washington, D.C. May 17, 1962

This plat is strictly conformable to the approved field notes, and the survey, having been correctly executed in accordance with the requirements of law and the regulations of this Bureau, is hereby accepted.

For the Director

E. J. Remington

Chief, Division of Engineering

3081 a

T33S, R66E