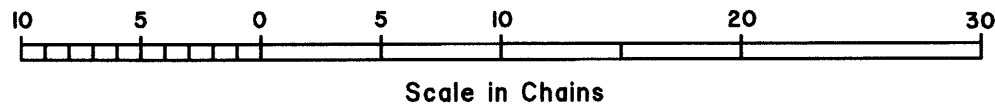
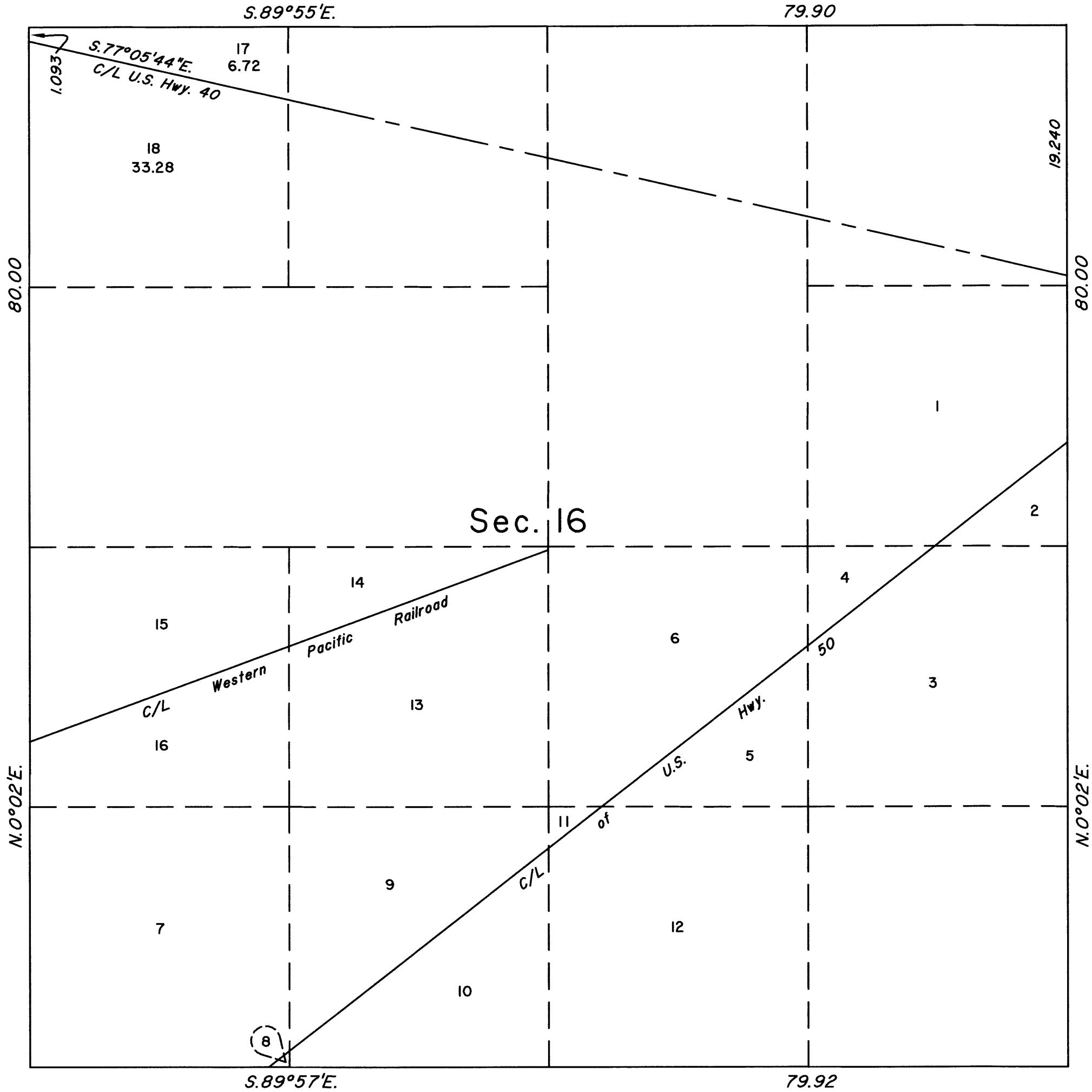
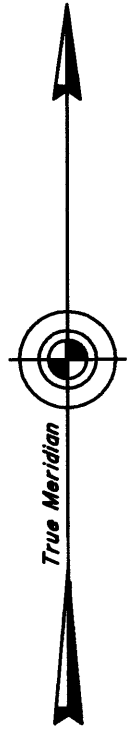


TOWNSHIP 33 NORTH, RANGE 70 EAST, OF THE MOUNT DIABLO MERIDIAN, NEVADA
SUPPLEMENTAL PLAT OF SECTION 16



This plat, showing amended lottings in the NW1/4NW1/4 of section 16, Township 33 North, Range 70 East, Mount Diablo Meridian, Nevada, is based upon the plats accepted August 13, 1948, July 30, 1970 and July 8, 1986, and State of Nevada, Department of Highways right-of-way application CC 023497, dated May 17, 1948.

Plat prepared under the oversight of Clarence D. Strickland, Supervisory Cadastral Surveyor, beginning November 28, 2018 and completed March 18, 2019, pursuant to Special Instructions dated November 28, 2018, and Assignment Instructions dated November 28, 2018, for Group No. 990, Nevada.

Except as indicated hereon, the lottings and areas are as shown on the plats accepted August 13, 1948, July 30, 1970 and July 8, 1986.

UNITED STATES DEPARTMENT OF THE INTERIOR
BUREAU OF LAND MANAGEMENT

Reno, Nevada March 25, 2019

This plat, showing amended lottings, is based upon the official records, and having been correctly prepared in accordance with the requirements of the law and the regulations of this Bureau, is hereby accepted.

For the Director

Michael O. Hammer

Chief Cadastral Surveyor for Nevada