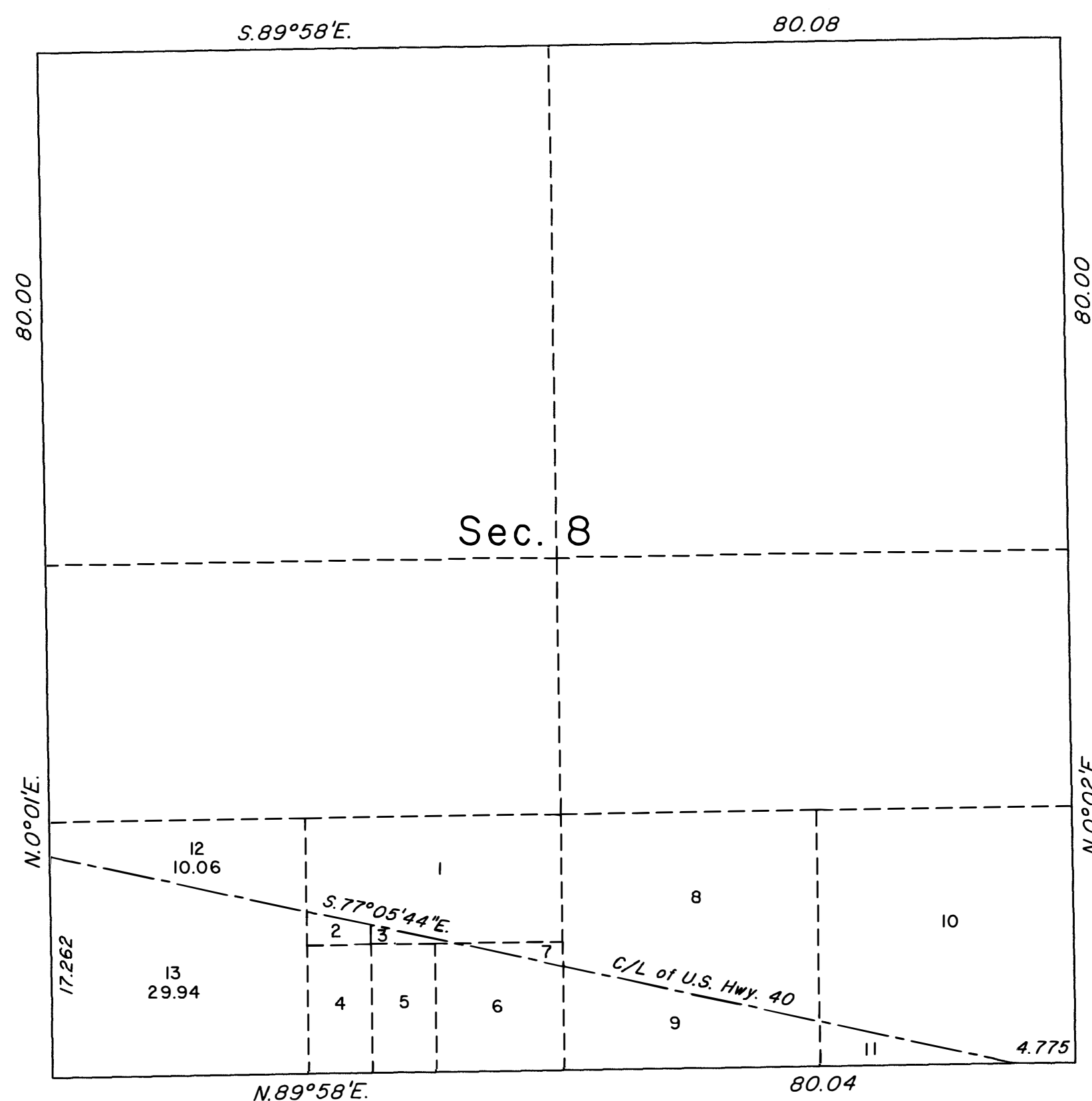
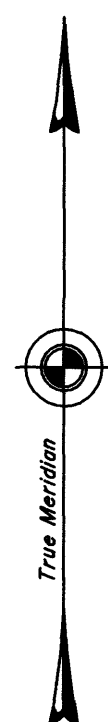


TOWNSHIP 33 NORTH, RANGE 70 EAST, OF THE MOUNT DIABLO MERIDIAN, NEVADA
SUPPLEMENTAL PLAT OF SECTION 8



This plat showing new lottings in the SW1/4SW1/4 of section 8, Township 33 North, Range 70 East, Mount Diablo Meridian, Nevada is based upon the plat accepted August 13, 1948, the plat accepted April 19, 1999 and the Nevada Department of Highways right-of-way application Nevada 023497, dated May 17, 1948.

Plat prepared by Brandon K. Grace, Cadastral Surveyor, beginning July 10, 2018 and completed July 10, 2018, pursuant to Special Instructions dated July 3, 2018 and Assignment Instructions dated July 3, 2018, for Group No. 987, Nevada.

Except as indicated hereon, the lottings and areas are as shown on the plat accepted August 13, 1948 and the plat accepted April 19, 1999.

UNITED STATES DEPARTMENT OF THE INTERIOR
BUREAU OF LAND MANAGEMENT

Reno, Nevada August 9, 2018

This plat, showing new lottings, is based upon the official records, and having been correctly prepared in accordance with the requirements of the law and the regulations of this Bureau, is hereby accepted.

For the Director

Michael O. Hammer

Chief Cadastral Surveyor for Nevada

