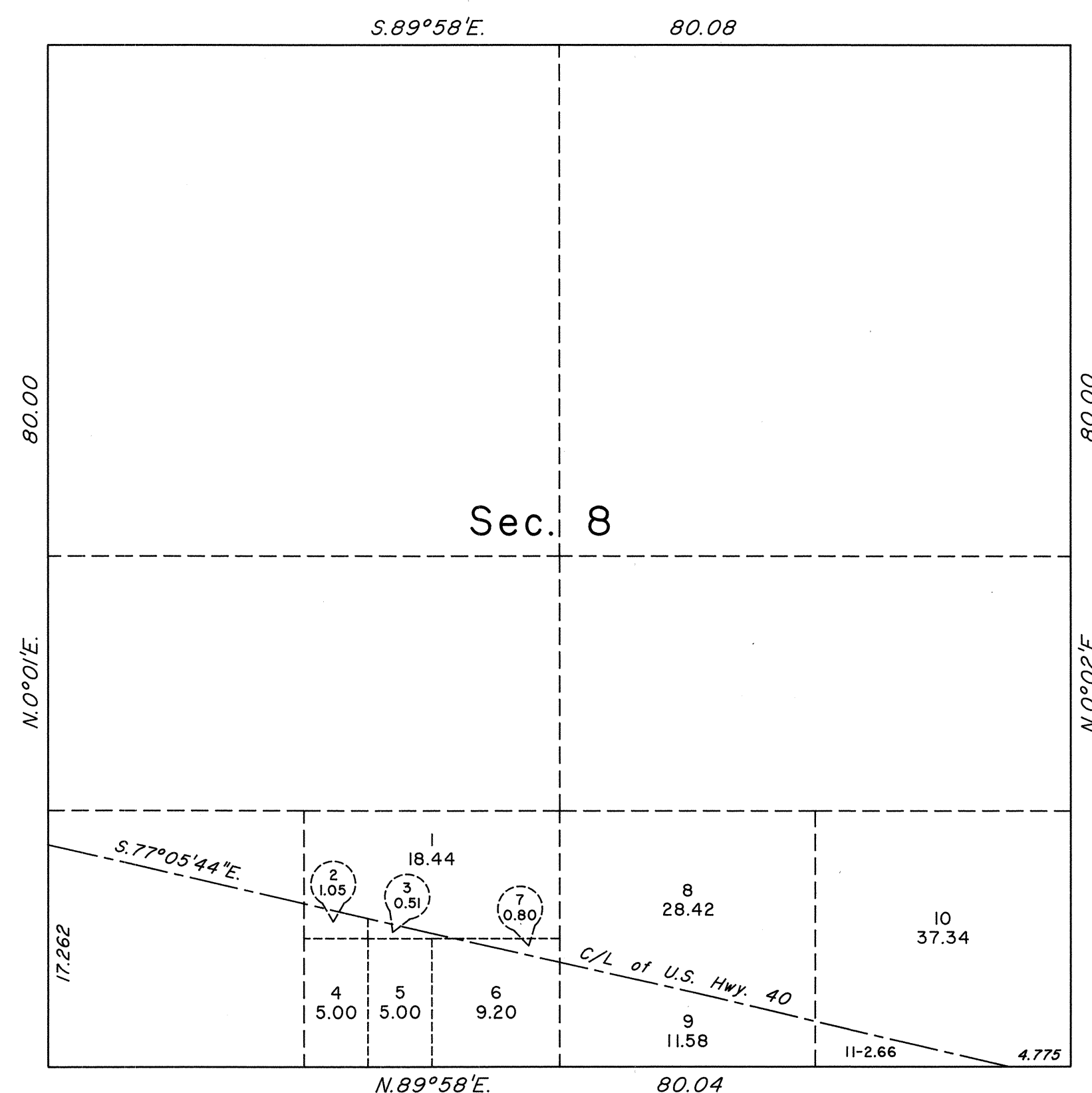
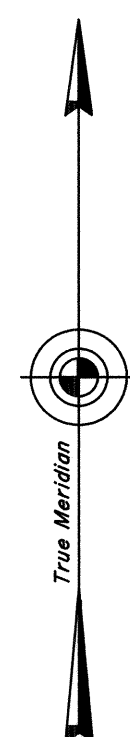


ORIGINAL

OFFICIALLY FILED
NEVADA STATE OFFICE
at 10:00 AM on April 22, 1999

TOWNSHIP 33 NORTH, RANGE 70 EAST, OF THE MOUNT DIABLO MERIDIAN, NEVADA
SUPPLEMENTAL PLAT OF SECTION 8



This plat, showing new lottings in the SE1/4 SW1/4, the SW1/4 SE1/4, and the SE1/4 SE1/4 of sec. 8, T.33N., R.70E., Mount Diablo Meridian, Nevada, is based upon the plat accepted August 13, 1948, and the Nevada Department of Highways right-of-way application Nevada 023497 dated May 17, 1948.

UNITED STATES DEPARTMENT OF THE INTERIOR
BUREAU OF LAND MANAGEMENT

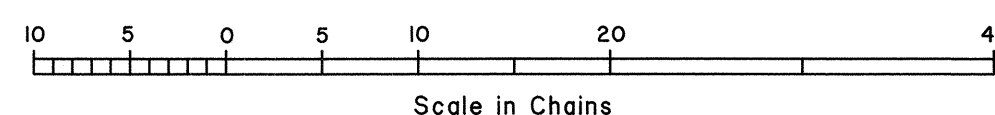
Reno, Nevada April 19, 1999

This plat, showing new lottings, is based upon the official records, and having been correctly prepared in accordance with the regulations of this Bureau, is hereby accepted.

For the Director

David L. Clark

Chief Cadastral Surveyor, Nevada



60

T.33N., R.70E., M.D.M.