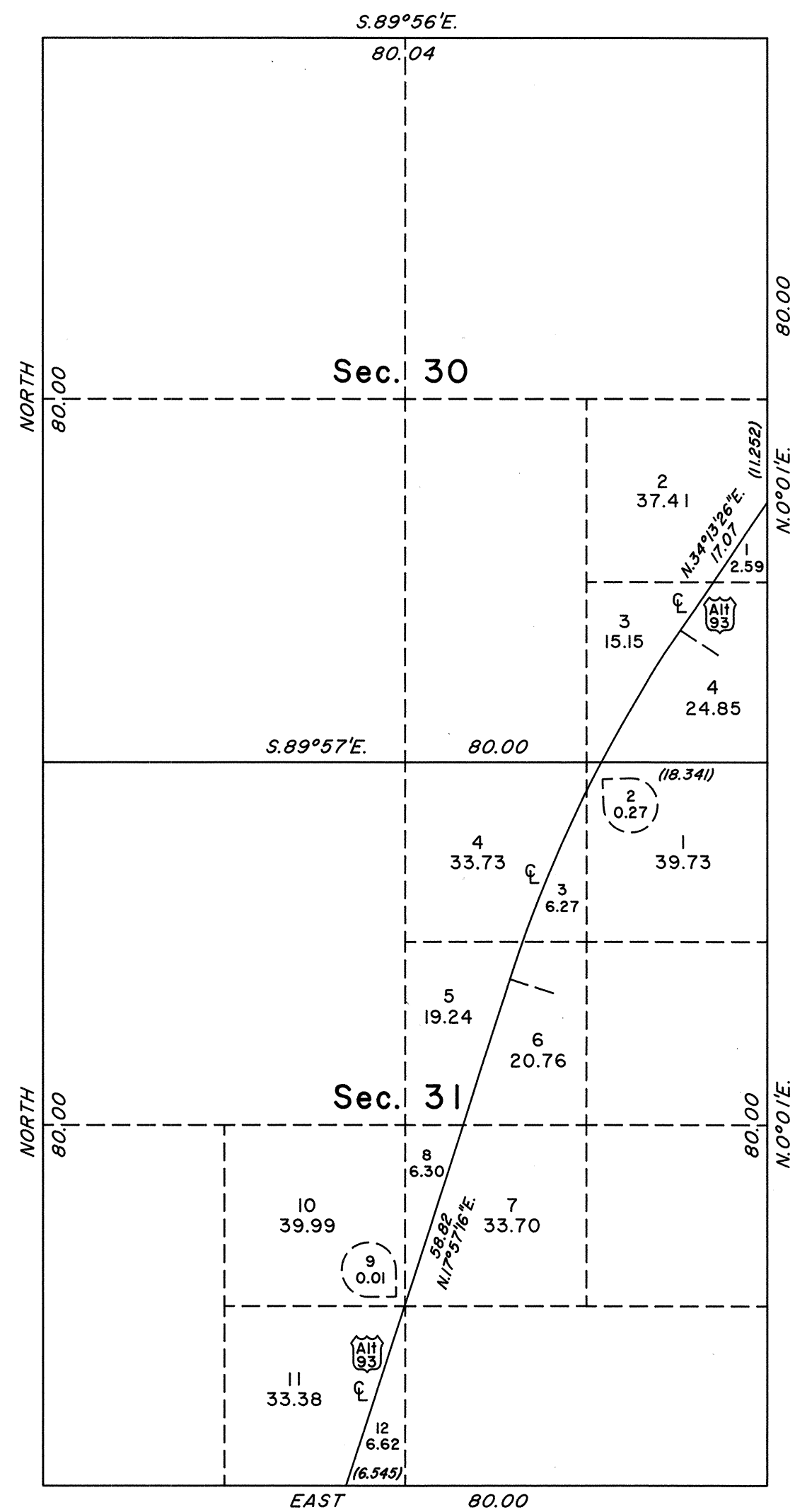
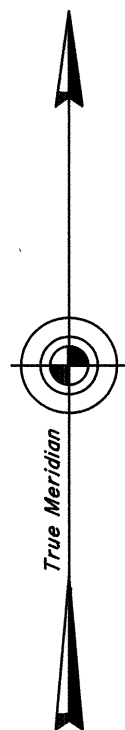


TOWNSHIP 33 NORTH, RANGE 70 EAST, OF THE MOUNT DIABLO MERIDIAN, NEVADA
SUPPLEMENTAL PLAT OF SECTIONS 30 AND 31



$\Delta = 16^{\circ}16'10''$
 $R = 10,000$ Ft.
 $L = 43.023$ Chs.

This plat, showing a subdivision of certain quarter quarter sections in sections 30 and 31, T.33N., R.70E., Mount Diablo Meridian, Nevada, is based upon the plat accepted August 13, 1948, and the Nevada Department of Highways right-of-way application Nevada 041037 dated July 15, 1955.

UNITED STATES DEPARTMENT OF THE INTERIOR
BUREAU OF LAND MANAGEMENT

Reno, Nevada April 8, 1997

This plat, showing amended lottings, is based upon the official records, and having been correctly prepared in accordance with the regulations of this Bureau, is hereby accepted.

For the Director

Robert H. Thompson

Acting Chief Cadastral Surveyor, Nevada

