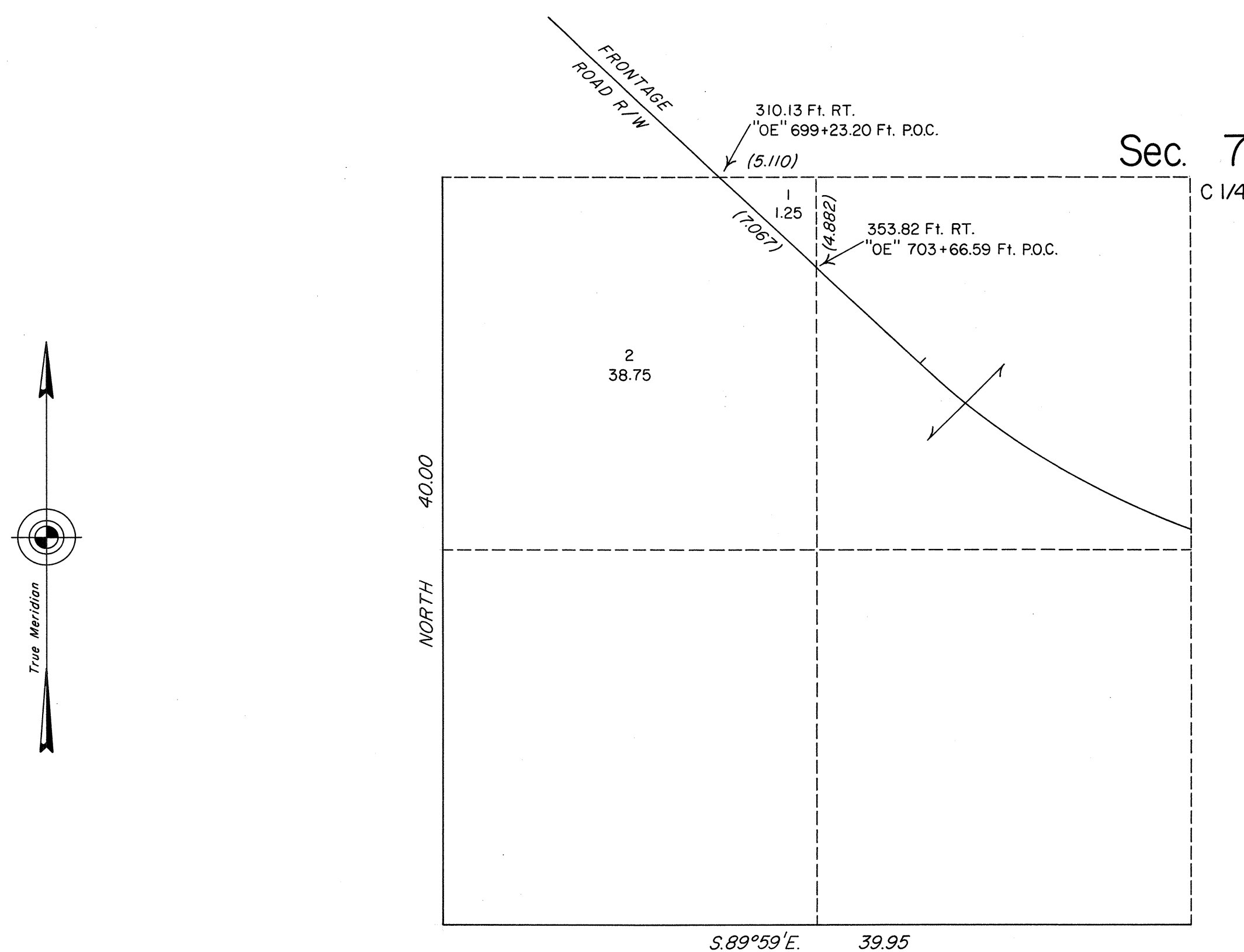


TOWNSHIP 33 NORTH, RANGE 70 EAST, OF THE MOUNT DIABLO MERIDIAN, NEVADA

SUPPLEMENTAL PLAT OF SW 1/4 SECTION 7



This plat, showing amended lottings in the SW 1/4 of sec. 7, T. 33 N., R. 70 E., Mount Diablo Meridian, Nevada, is based upon the plat accepted August 13, 1948, and the Nevada Department of Highway right-of-way map of Interstate No. 80 dated July, 1976.

Lottings and areas shown hereon pertain to Federal Estates only.

UNITED STATES DEPARTMENT OF THE INTERIOR
BUREAU OF LAND MANAGEMENT

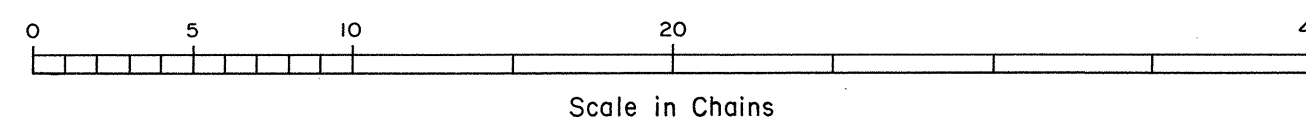
Reno, Nevada December 19, 1988

This plat, showing amended lottings, is based upon the official records and, having been correctly prepared in accordance with the regulations of this Bureau, is hereby accepted.

For the Director

Lacel E. Bland

Chief Cadastral Surveyor



T.33N., R.70E., M.D.M.