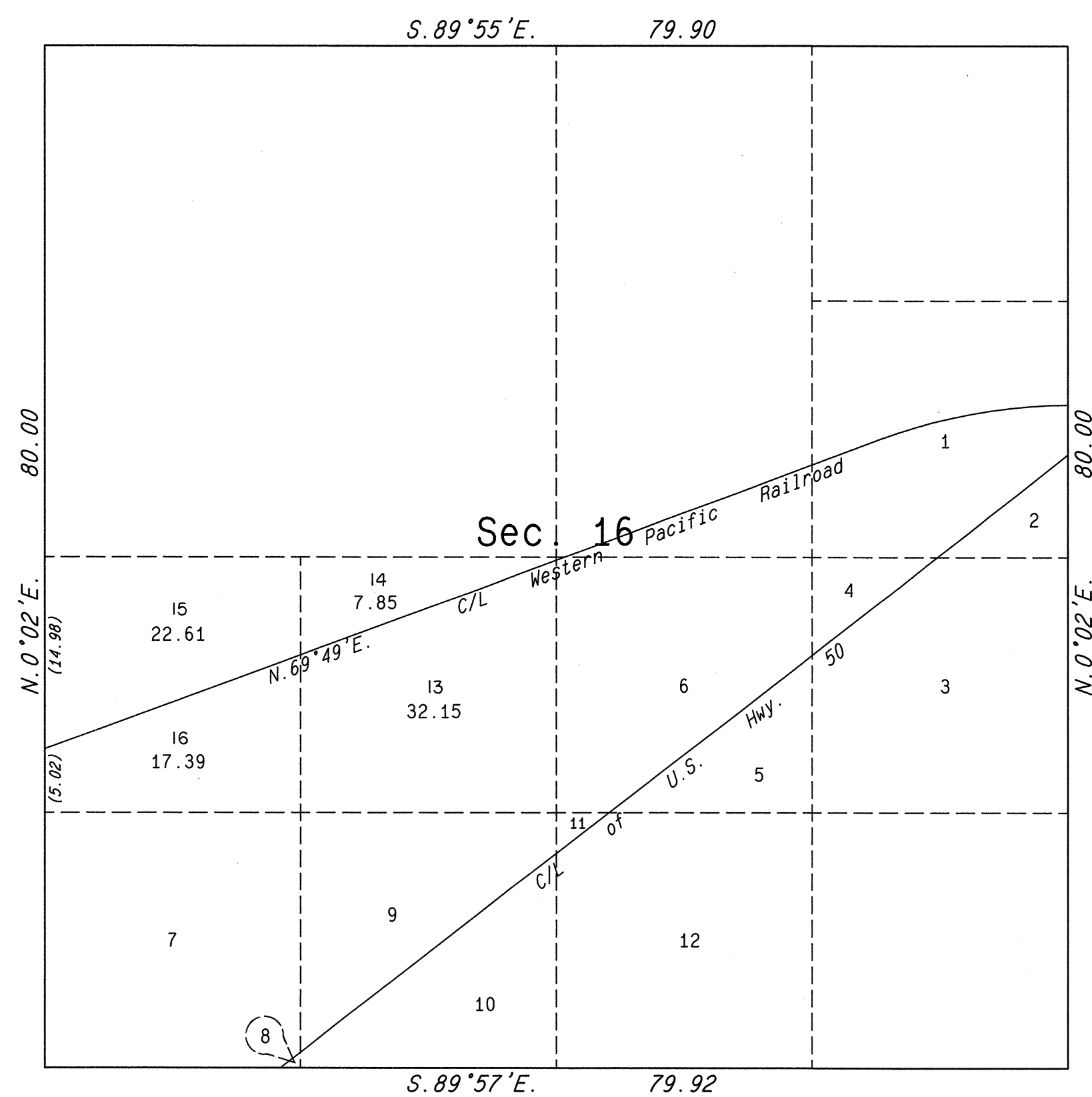
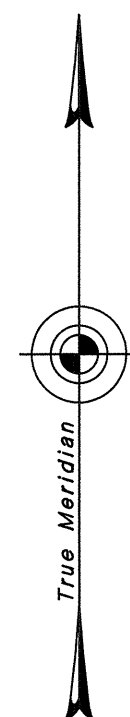


# TOWNSHIP 33 NORTH, RANGE 70 EAST, OF THE MOUNT DIABLO MERIDIAN, NEVADA

## SUPPLEMENTAL PLAT OF SECTION 16



This plat, showing a subdivision of the NE1/4 SW1/4 and NW1/4 SW1/4 of sec. 16, T. 33 N., R. 70 E., Mount Diablo Meridian, Nevada, is based upon the plats accepted August 13, 1948 and July 30, 1970.

UNITED STATES DEPARTMENT OF THE INTERIOR  
BUREAU OF LAND MANAGEMENT

Reno, Nevada July 8, 1986

This plat, showing amended lottings, is based upon the official records and, having been correctly prepared in accordance with the regulations of this Bureau, is hereby accepted.

For the Director

*Lael E. Bland*

Chief Cadastral Surveyor

