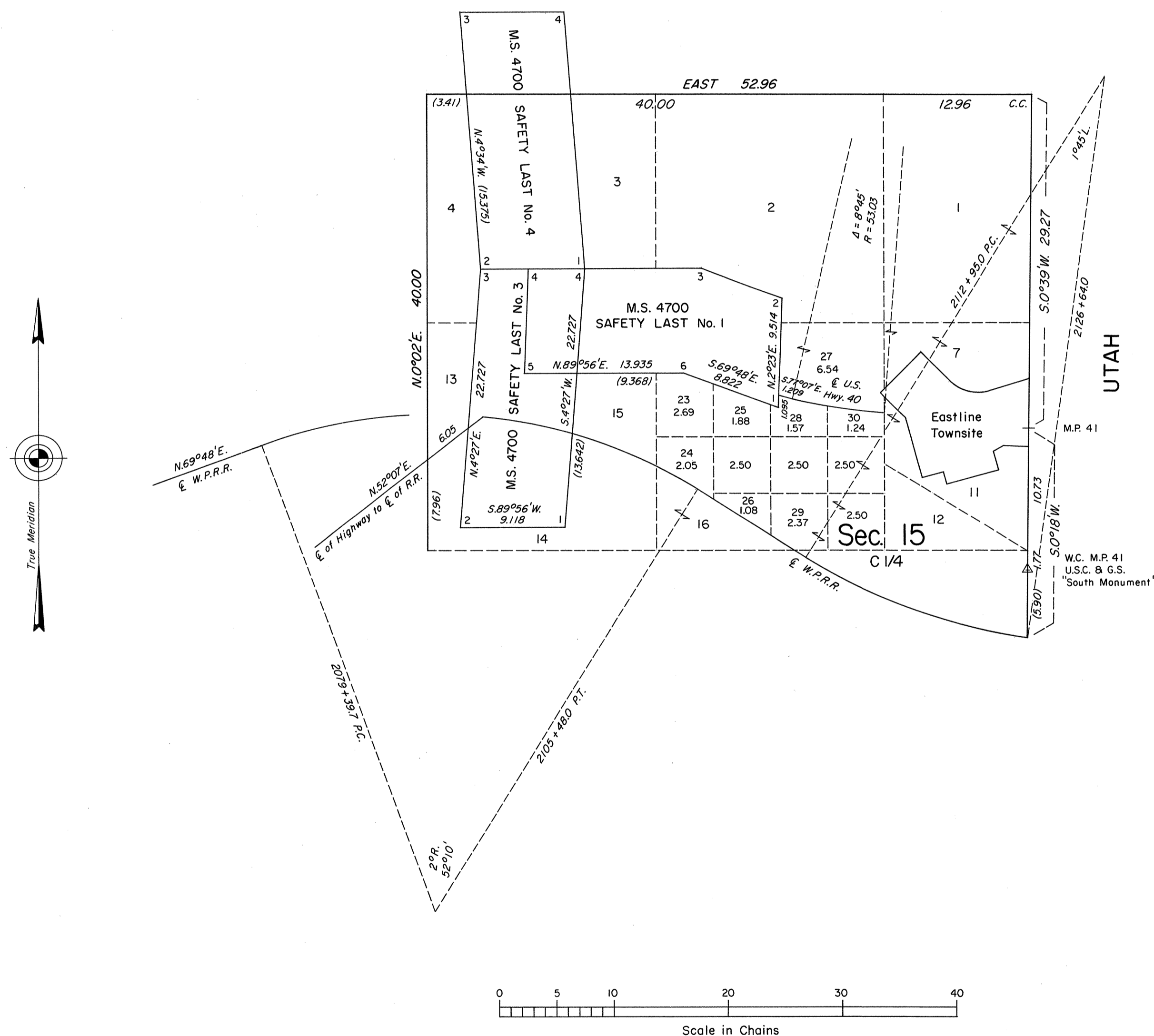


ORIGINAL

TOWNSHIP 33 NORTH, RANGE 70 EAST, OF THE MOUNT DIABLO MERIDIAN, NEVADA
SUPPLEMENTAL PLAT OF N 1/2 SECTION 15



This plat, showing a subdivision of original lot 17, sec. 15, T. 33 N., R. 70 E., Mount Diablo Meridian, Nevada, is based upon the plats accepted August 13, 1948, December 16, 1957 and November 15, 1972, the mineral survey records (including M.S. 4927-cancelled), the supplemental data on the railroad center line obtained from the Second Amended Location of the Western Pacific Railroad dated April 10, 1910 and the Nevada Department of Highways right-of-way map dated May, 1949.

UNITED STATES DEPARTMENT OF THE INTERIOR
BUREAU OF LAND MANAGEMENT

Reno, Nevada

June 4, 1986

This plat, showing amended lottings, is based upon the official records and, having been correctly prepared in accordance with the regulations of this Bureau, is hereby accepted.

For the Director

Lacel E. Bland

Chief Cadastral Surveyor