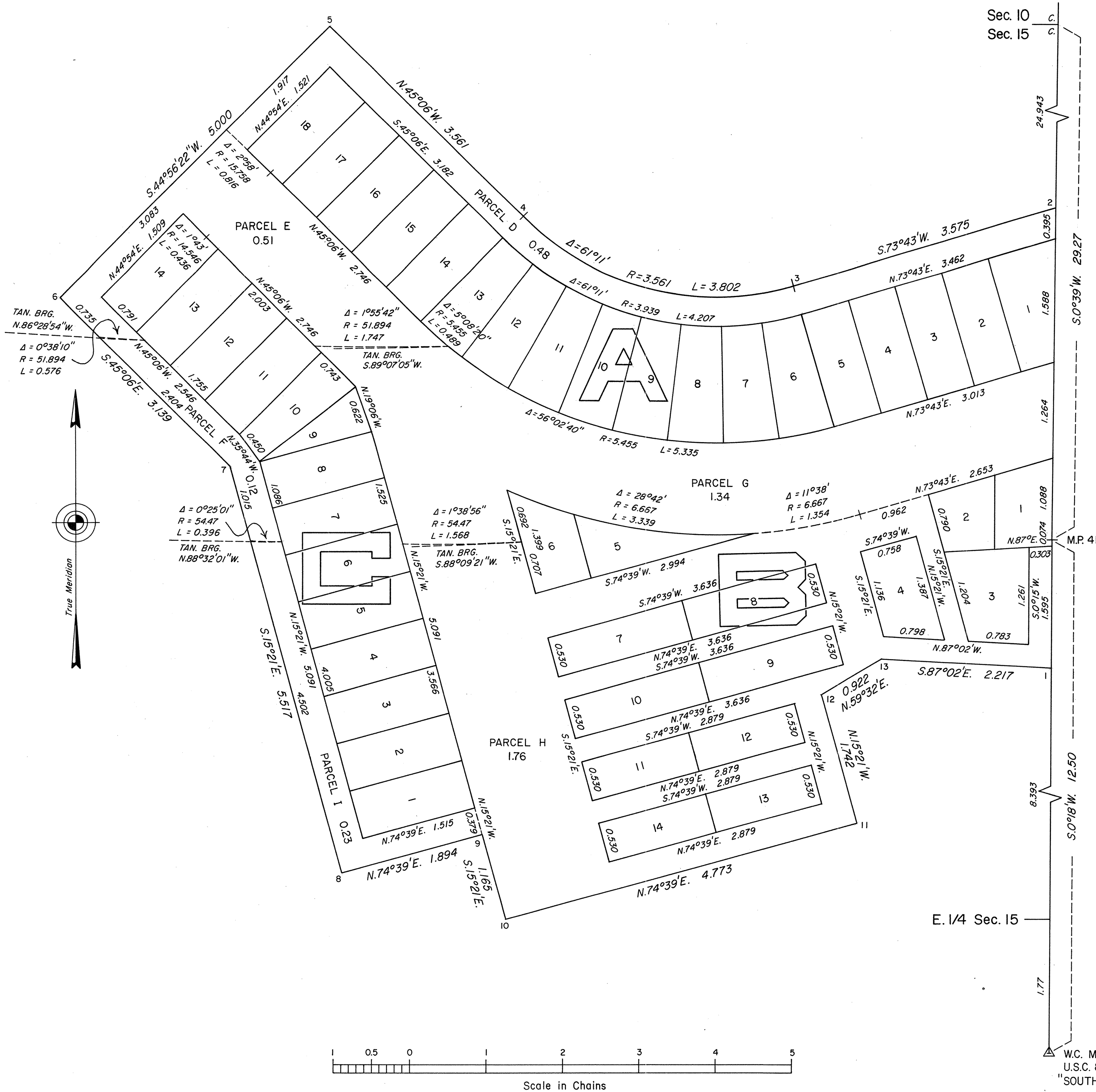


TOWNSHIP 33 NORTH, RANGE 70 EAST, OF THE MOUNT DIABLO MERIDIAN, NEVADA
SUPPLEMENTAL PLAT OF EASTLINE TOWNSITE

OFFICIALLY FILED
NEVADA STATE OFFICE
10:00 A.M. MAY 7, 1985



This plat, showing parcels in the Eastline Townsite, located in section 15, T. 33 N., R. 70 E., Mount Diablo Meridian, Nevada, is based upon the plat approved October 25, 1930, the plat accepted August 13, 1948, and the State of Nevada Department of Transportation right-of-way map prepared for William F. and Hazel Anna Smith, approved April (no day) 1949.

UNITED STATES DEPARTMENT OF THE INTERIOR
BUREAU OF LAND MANAGEMENT

Reno, Nevada

April 23, 1985

This plat showing parcels in the Eastline Townsite, is based upon the official records and, having been correctly prepared in accordance with the regulations of this Bureau, is hereby accepted.

For the Director

Lael E. Bland

Chief Cadastral Surveyor

E. 1/4 Sec. 15

W.C. M.P. 41
U.S.C. & G.S.
"SOUTH MONUMENT"