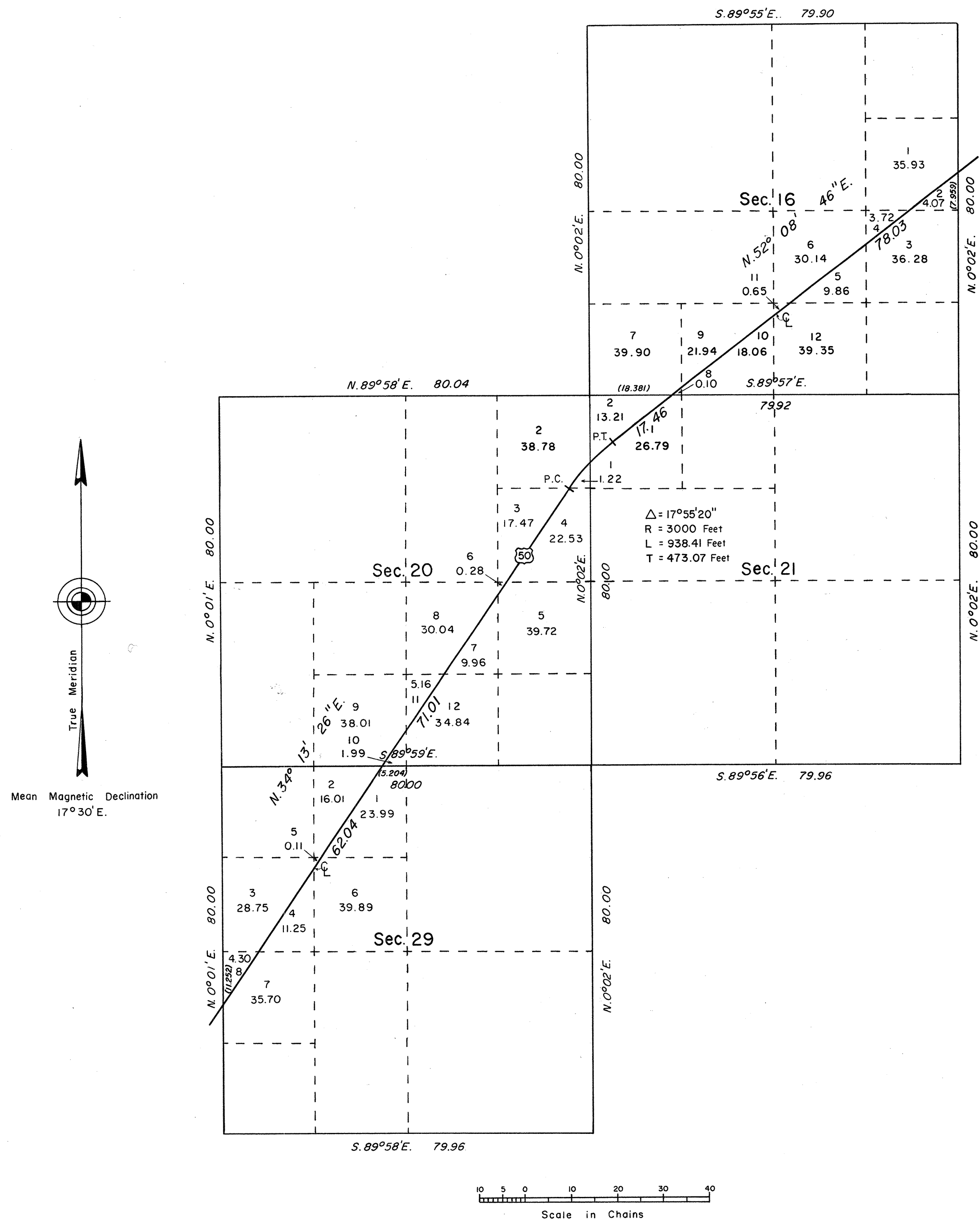


TOWNSHIP 33 NORTH, RANGE 70 EAST, OF THE MOUNT DIABLO MERIDIAN, NEVADA.  
SUPPLEMENTAL PLAT OF SECTIONS 16, 20, 21 AND 29.

This supplemental plat of sections 16, 20, 21, and 29, T. 33 N., R. 70 E., Mount Diablo Meridian, Nevada, showing a subdivision of certain quarter sections into separate areas bounded by the centerline of the highway, is based upon the plat accepted August 13, 1948, and supplemental data on the highway centerline obtained from Nevada State Highway Department right-of-way applications, Nevada 041037, dated July 15, 1955, and amended May 31, 1966.

OFFICIALLY FILED  
NEVADA LAND OFFICE  
10:00 A.M. 9/11/1970



UNITED STATES DEPARTMENT OF THE INTERIOR  
BUREAU OF LAND MANAGEMENT  
Washington, D. C. July 30, 1970

This plat, showing amended lottings, is based upon the official records, and having been correctly prepared in accordance with the regulations, is hereby accepted.

For the Director

*Clark L. Lamm*

Chief, Division of Cadastral Survey