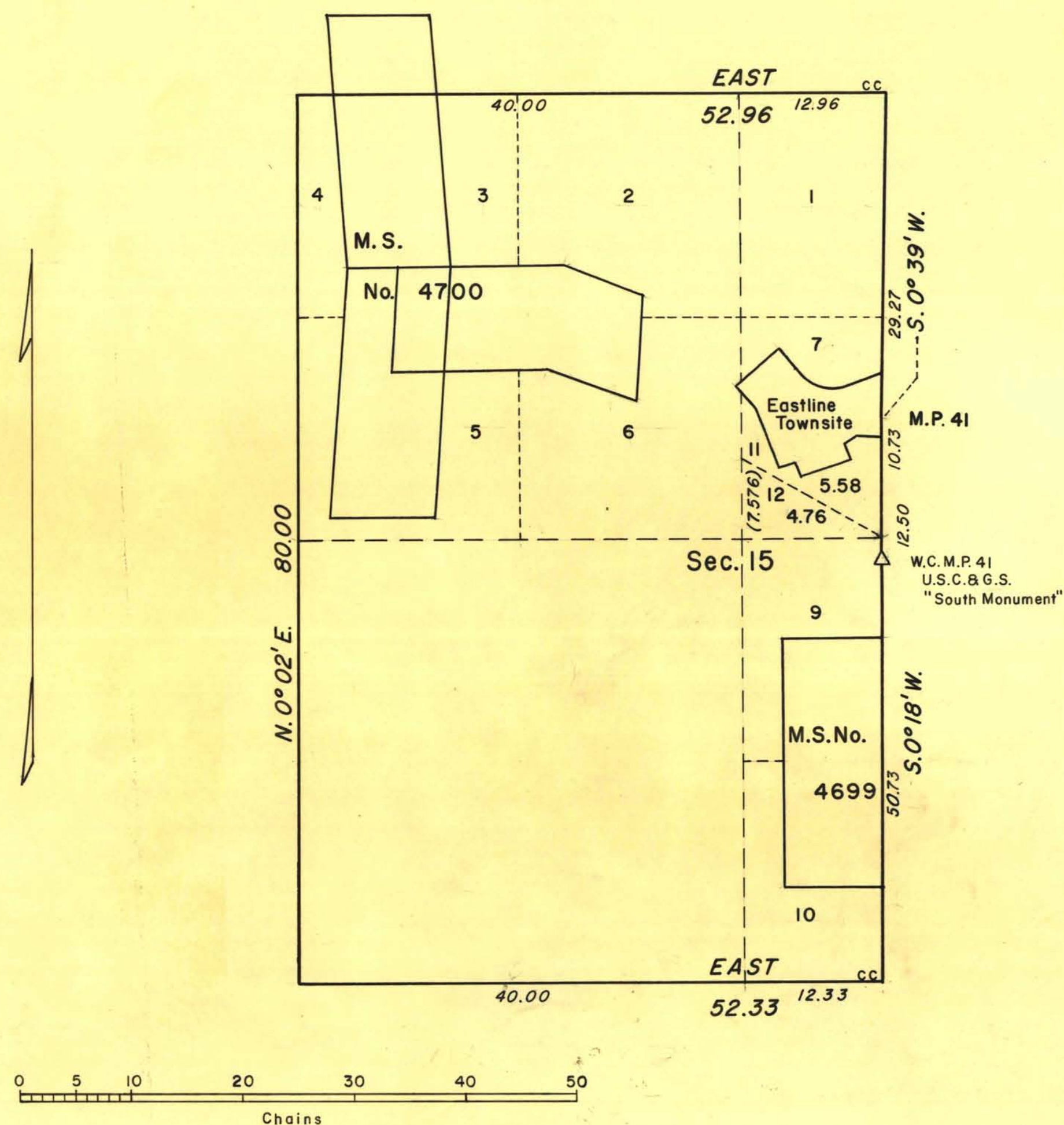


TOWNSHIP 33 NORTH, RANGE 70 EAST, OF THE MOUNT DIABLO MERIDIAN, NEVADA.  
SUPPLEMENTAL PLAT



This supplemental plat of sec. 15,  
T. 33 N., R. 70 E., M.D.M., Nevada,  
based on plat accepted August 13,  
1948, is prepared to show a subdivi-  
sion of original lot 8.

UNITED STATES DEPARTMENT OF THE INTERIOR  
BUREAU OF LAND MANAGEMENT  
Washington, D.C. December 16, 1957

This plat showing amended lottings, having been correctly  
prepared in accordance with the regulations, is hereby accepted.

For the Director

*Earl G. Harrington*  
Cadastral Engineering Staff Officer