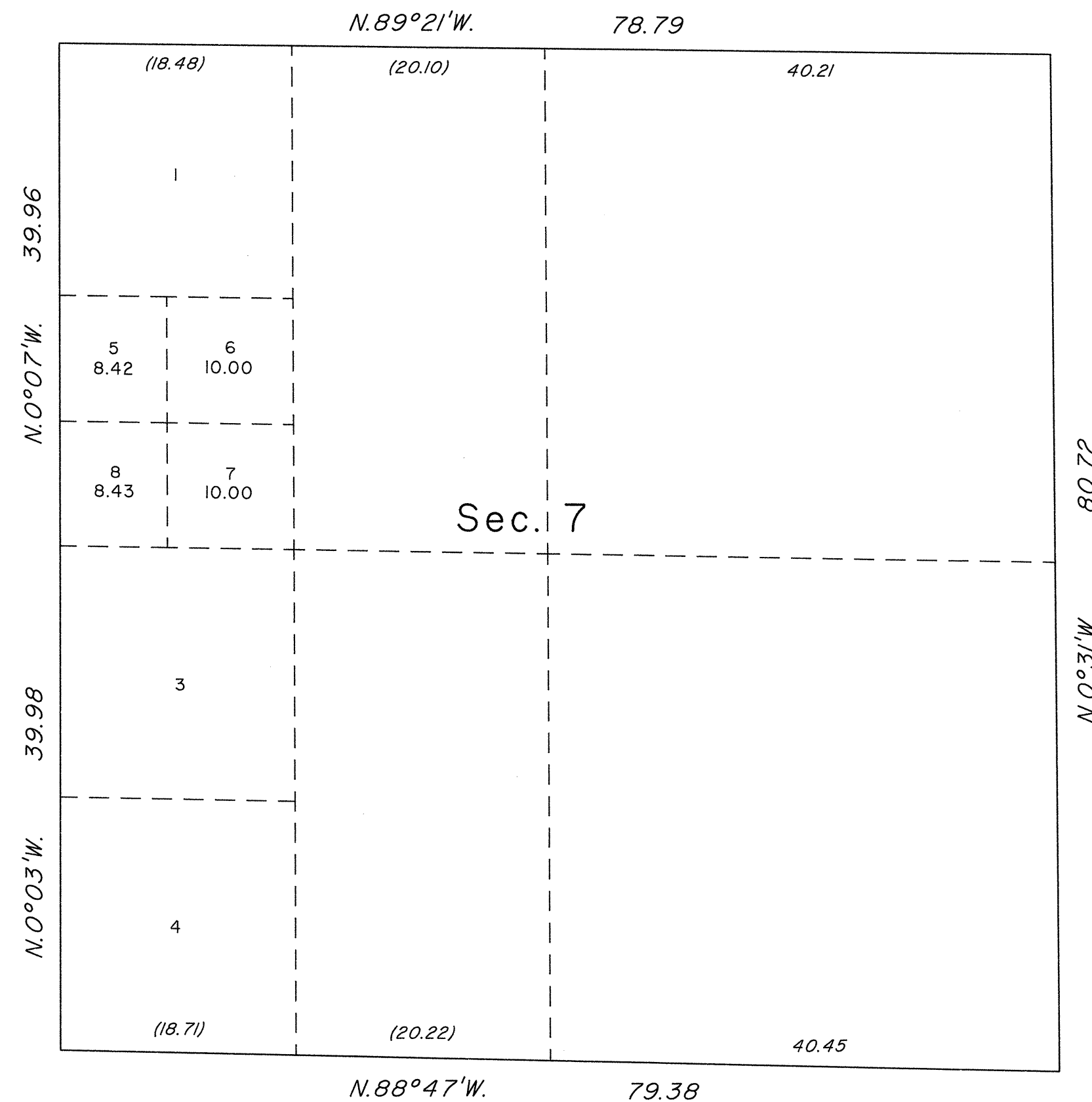
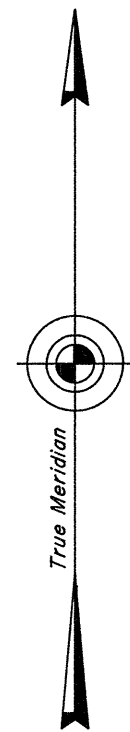


TOWNSHIP 33 NORTH, RANGE 62 EAST, MOUNT DIABLO MERIDIAN, NEVADA
SUPPLEMENTAL PLAT OF SECTION 7



This plat represents an amended lotting of original lot 2, of sec. 7, T. 33 N., R. 62 E., Mount Diablo Meridian, Nevada, and is based upon the plat approved December 29, 1870, and the plat accepted November 28, 1977.

UNITED STATES DEPARTMENT OF THE INTERIOR
BUREAU OF LAND MANAGEMENT

Reno, Nevada June 23, 1992

This plat, showing amended lottings, is based upon the official records, and having been correctly prepared in accordance with the regulations of this Bureau, is hereby accepted.

For the Director

John S. Smith
Chief Cadastral Surveyor, Nevada

