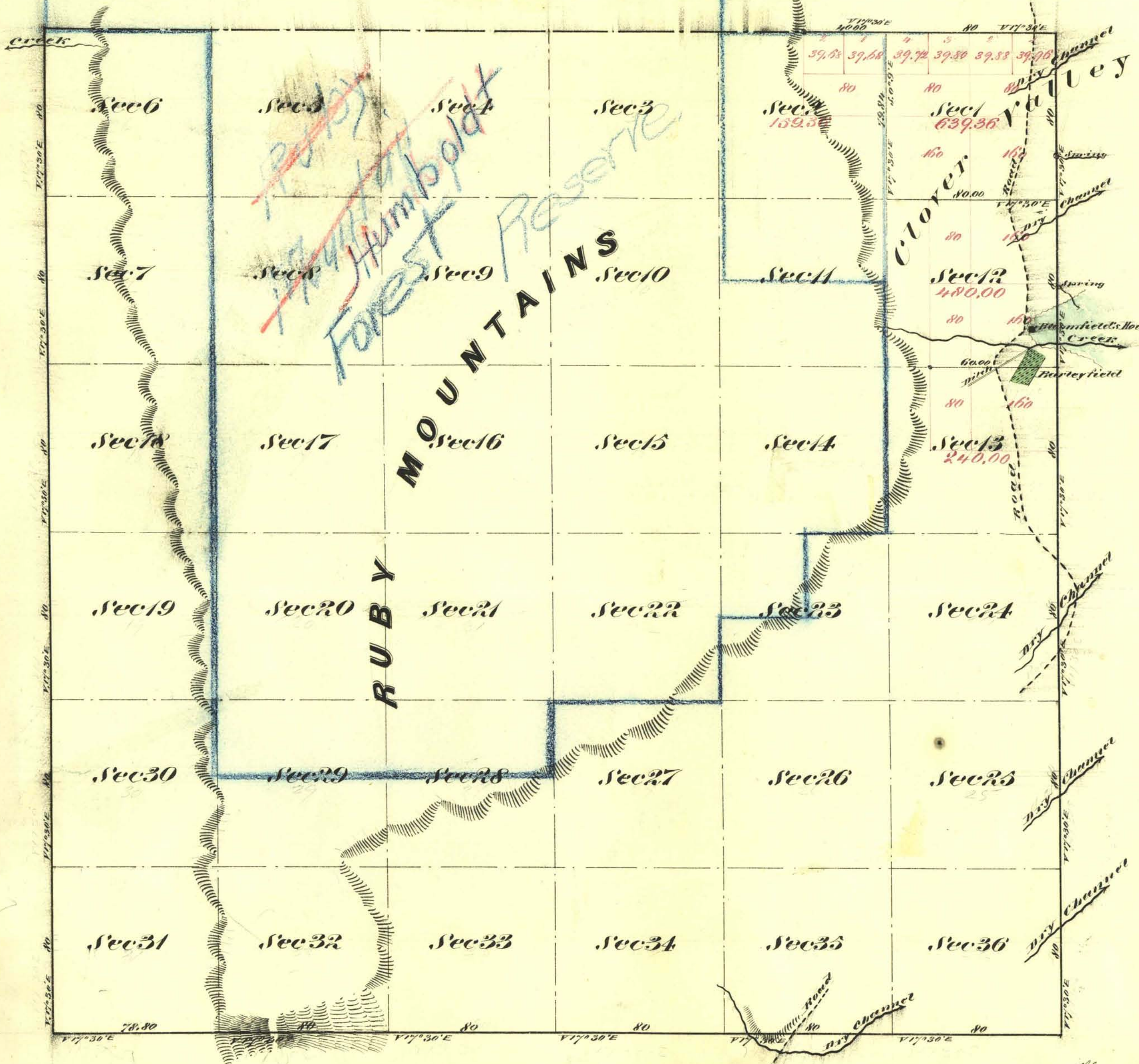


Township N^o 33 North

Range N^o 61 East

Mount Diablo Meridian



| | |
|--|--------------------|
| Aggregate Area of Public Land (Surveyed) | 4,518.72 Acres |
| Estimated " Ruby Mountains (unsurveyed) | 21,460.16 " |
| <u>Aggregate</u> | <u>22,978.88 "</u> |

Commenced February 25th 1870
 Completed " " "

| Surveys Designated | By Whom Surveyed | Date of Contract | Amount of Surveys Miles chs etc | When Surveyed | N ^o Corr. |
|--------------------|------------------------|--------------------------------|------------------------------------|---------------|----------------------|
| Township lines | A. J. Hatch & H. Eaton | November 18 th 1869 | 19 37 80 | 1869 | 32 |
| Subdivision lines | " " " " | " " " | 2 89 84 | February 1870 | " |

The above Map of Township N^o 33 North Range N^o 61 East Mount Diablo Meridian is strictly conformable to the field notes of the surveys thereon file in the Office which have been examined and approved
 U.S. Surveyor General's Office
 Virginia City Nevada
 March 29th 1870

E. S. Davis
 U.S. Surveyor General Nevada