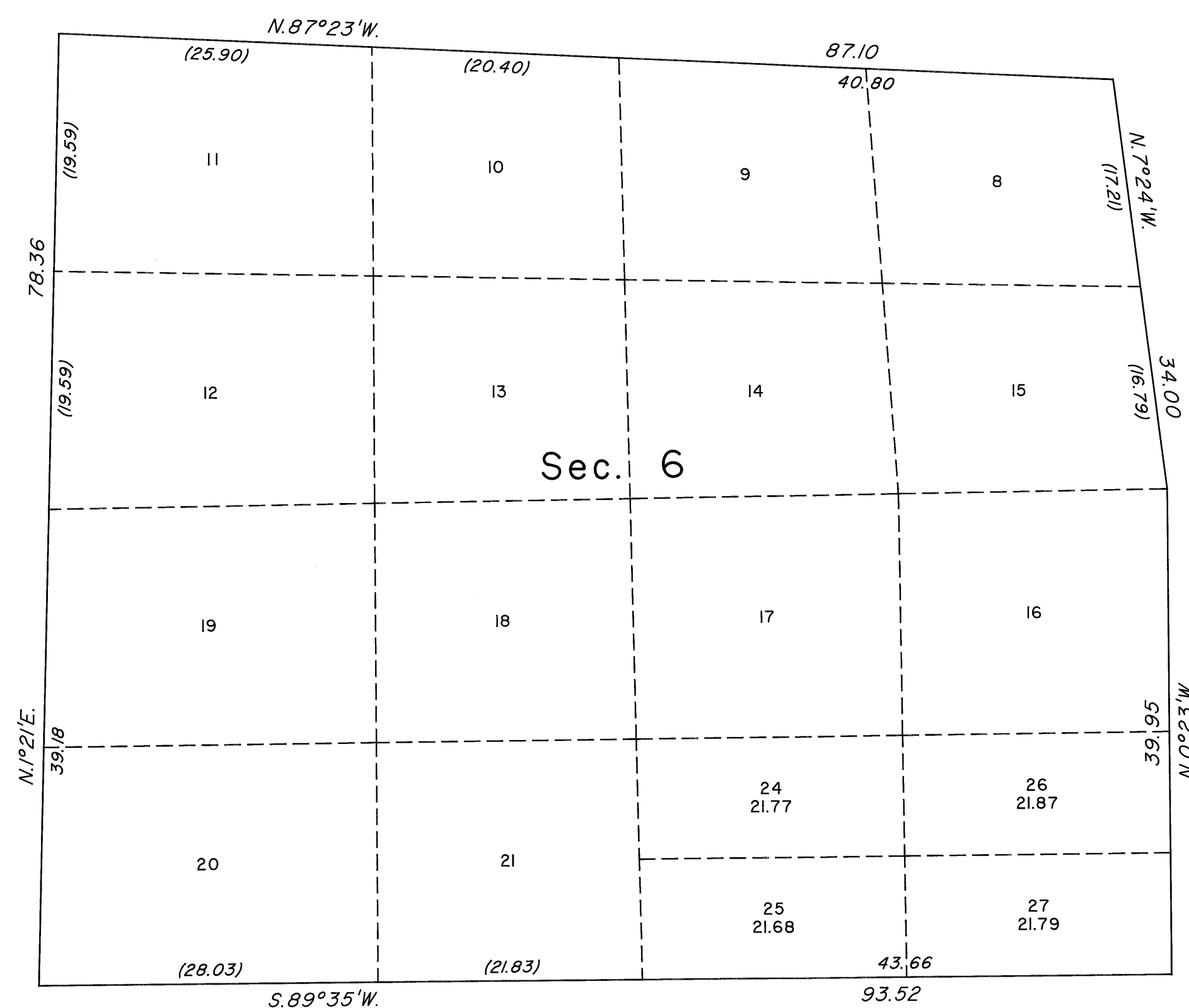


TOWNSHIP 33 NORTH, RANGE 55 EAST, OF THE MOUNT DIABLO MERIDIAN, NEVADA  
SUPPLEMENTAL PLAT OF SECTION 6



This plat, showing the subdivision of lots 22 and 23, sec. 6, T. 33 N., R. 55 E., Mount Diablo Meridian, Nevada, is based upon the plat approved February 20, 1897, and the plat accepted August 21, 1985.

UNITED STATES DEPARTMENT OF THE INTERIOR  
BUREAU OF LAND MANAGEMENT

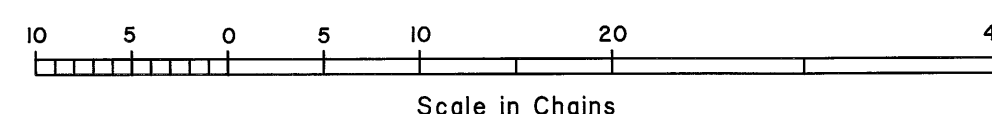
Reno, Nevada December 10, 2009

This plat, showing amended lottings, is based upon the official records, and having been correctly prepared in accordance with the regulations of this Bureau, is hereby accepted.

For the Director

*David J. Clark*

Acting Chief Cadastral Surveyor, Nevada



T.33N., R.55E., M.D.M.