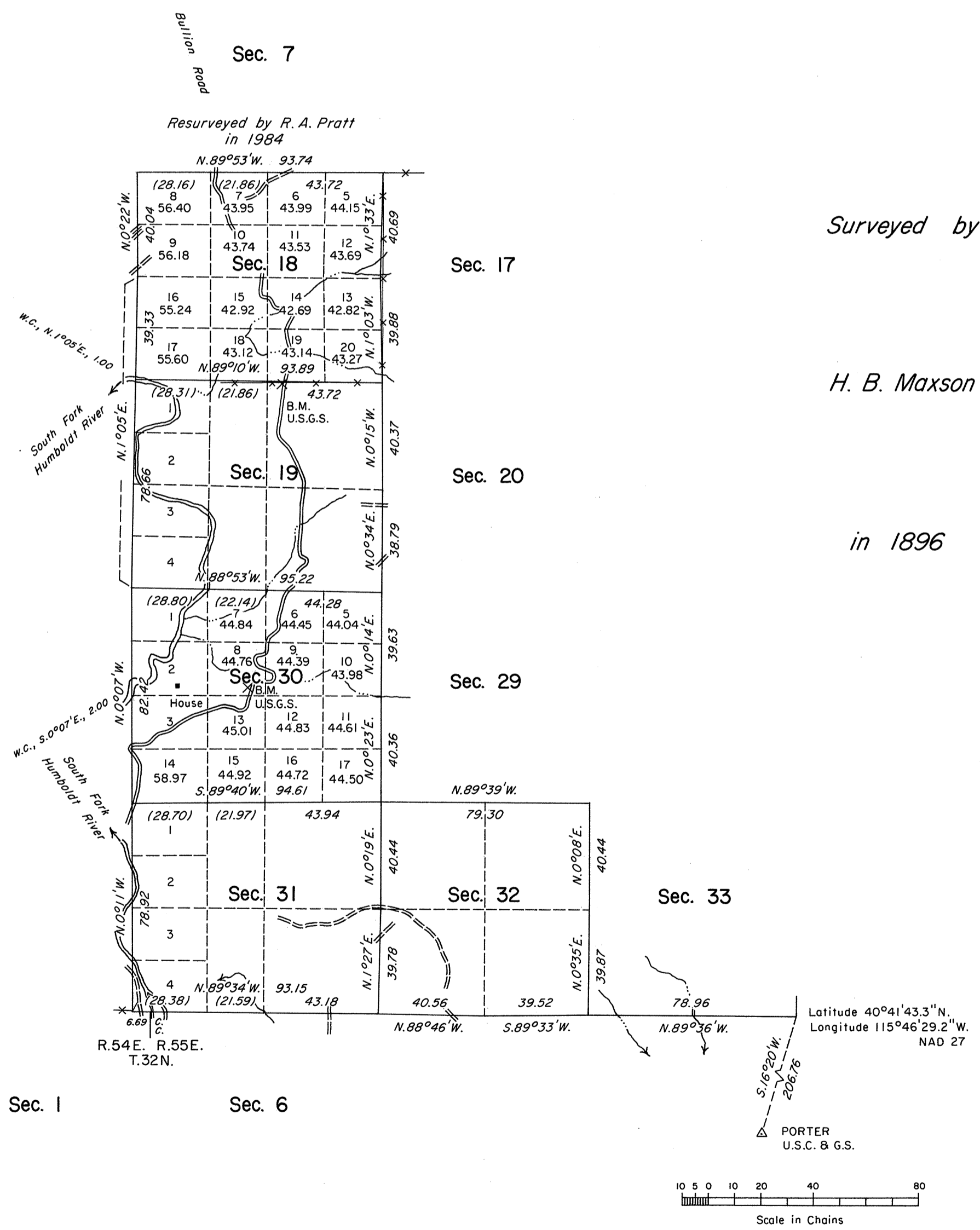
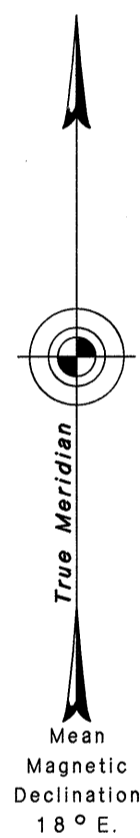


ORIGINAL

TOWNSHIP 33 NORTH, RANGE 55 EAST, OF THE MOUNT DIABLO MERIDIAN, NEVADA
DEPENDENT RESURVEY



Surveyed by
H. B. Maxson
in 1896

Resurveyed by R. A. Pratt
in 1984

History of the earlier surveys is contained in the field notes.

A dependent resurvey of a portion of the west boundary was executed concurrently under T. 33 N., R. 54 E., of this same Group.

This plat represents a dependent resurvey of a portion of the south boundary and a portion of the subdivisional lines of T. 33 N., R. 55 E., designed to restore the corners in their true original locations according to the best available evidence.

Lottings and areas, except as shown hereon, are as shown on the plat approved February 20, 1897.

Survey executed by Neil R. Forsyth, Cadastral Surveyor, beginning May 5, 1987 and completed May 28, 1987, under Special Instructions dated April 29, 1987, for Group No. 645, Nevada.

UNITED STATES DEPARTMENT OF THE INTERIOR
BUREAU OF LAND MANAGEMENT

Reno, Nevada September 16, 1988

This plat is strictly conformable to the approved field notes, and the survey, having been correctly executed in accordance with the requirements of law and the regulations of this Bureau, is hereby accepted.

For the Director

Lacel E. Bland

Chief Cadastral Surveyor

GMJ