

ORIGINAL

TOWNSHIP 33 NORTH, RANGE 54 EAST, OF THE MOUNT DIABLO MERIDIAN, NEVADA

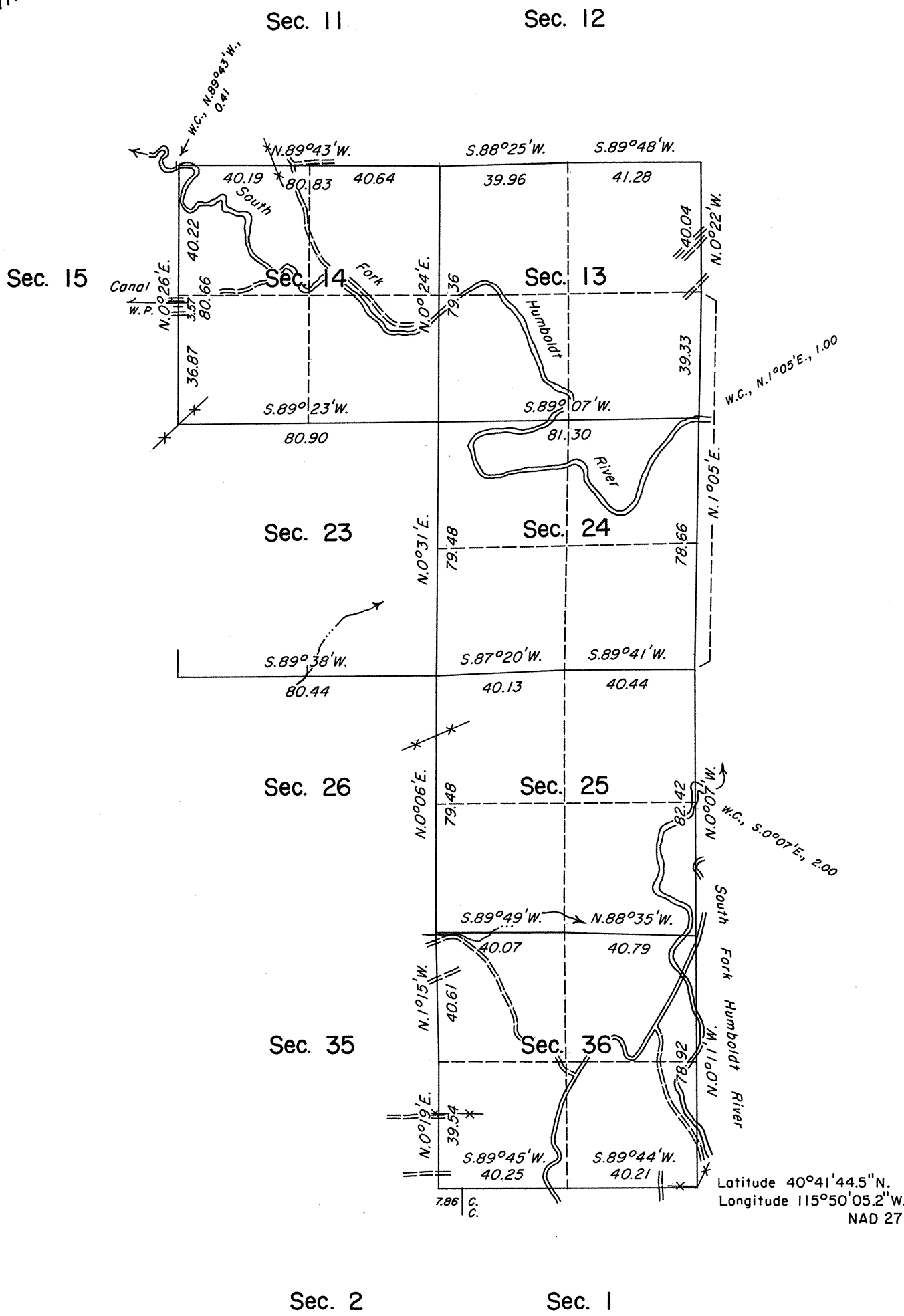
DEPENDENT RESURVEY

Surveyed by C. C. Tracy in 1868

Surveyed by

H. B. Maxson

in 1896



History of the earlier surveys is contained in the field notes.

This plat represents a dependent resurvey of a portion of the south and east boundaries and a portion of the subdivisional lines of T. 33 N., R. 54 E., designed to restore the corners in their true original locations according to the best available evidence.

Lottings and areas are as shown on the plats approved October 28, 1896 and January 16, 1906.

Survey executed by Neil R. Forsyth, Cadastral Surveyor, beginning May 5, 1987 and completed June 3, 1987, under Special Instructions dated April 29, 1987, for Group No. 645, Nevada.

UNITED STATES DEPARTMENT OF THE INTERIOR  
BUREAU OF LAND MANAGEMENT

Reno, Nevada September 16, 1988

This plat is strictly conformable to the approved field notes, and the survey, having been correctly executed in accordance with the requirements of law and the regulations of this Bureau, is hereby accepted.

For the Director

*Lacel E. Bland*

Chief Cadastral Surveyor

