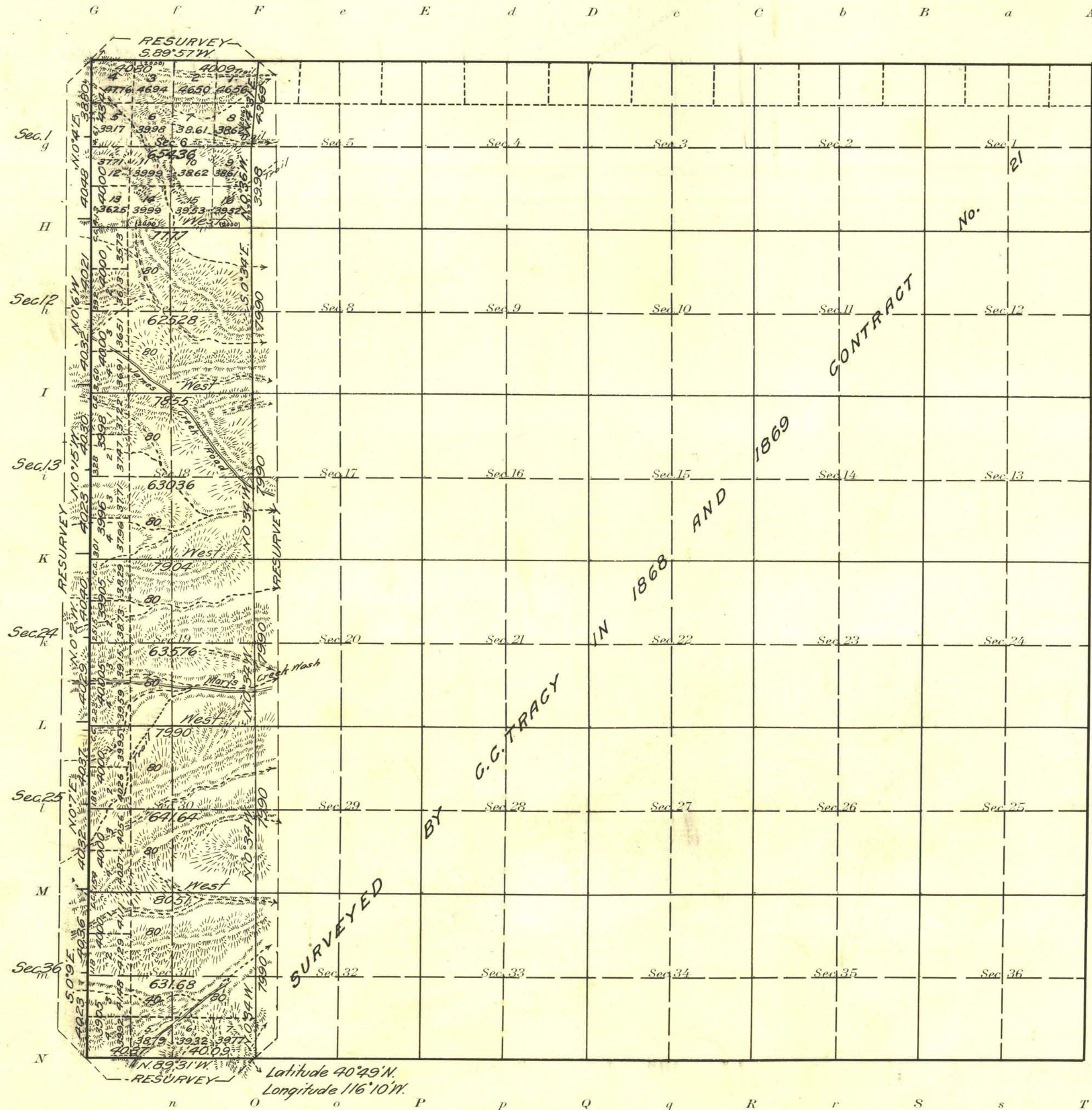


Accepted May 2, 1922.

Township N^o 33 North Range N^o 52 East M^t Diablo Meridian, Nevada



Areas in Acres	
Public Land	3819.08
Indian Reservation	
Indian Allotments	
Mineral Claims	
Water Surface	
Total Area	3819.08

Scale 40 Chains to an inch
 Mean Magnetic Declination 17°40' E.

Surveys Designated	By Whom Surveyed	Group		Amount of Surveys		When Surveyed		
		No.	Date of Instructions	Mis.	chs.	lks.	Begun	Completed
North Boundary Res.	Scott P. Stewart	27	March 23, 1914	1	00	89	Aug. 8, 1914	Aug. 8, 1914
South Boundary Res.	and Rudan W. Riley		Feb. 17, 1914	1	00	96	Aug. 1, 1914	Aug. 1, 1914
West Boundary Res.	"	"	"	6	02	31	Aug. 1, 1914	Aug. 8, 1914
Subdivision Res.	"	"	"	6	03	17	July 31, 1914	Aug. 8, 1914
Subdivision	"	"	"	4	75	17	July 31, 1914	Aug. 8, 1914

The above map of Township No. 33 North Range No. 52 East of the Mt. Diablo Meridian Nevada is strictly conformable to the field notes of the survey thereof on file in this office, which have been examined and approved
 U. S. Surveyor General's Office.
 Reno, Nevada, October 18, 1921

J. C. Elden
 Surveyor General.