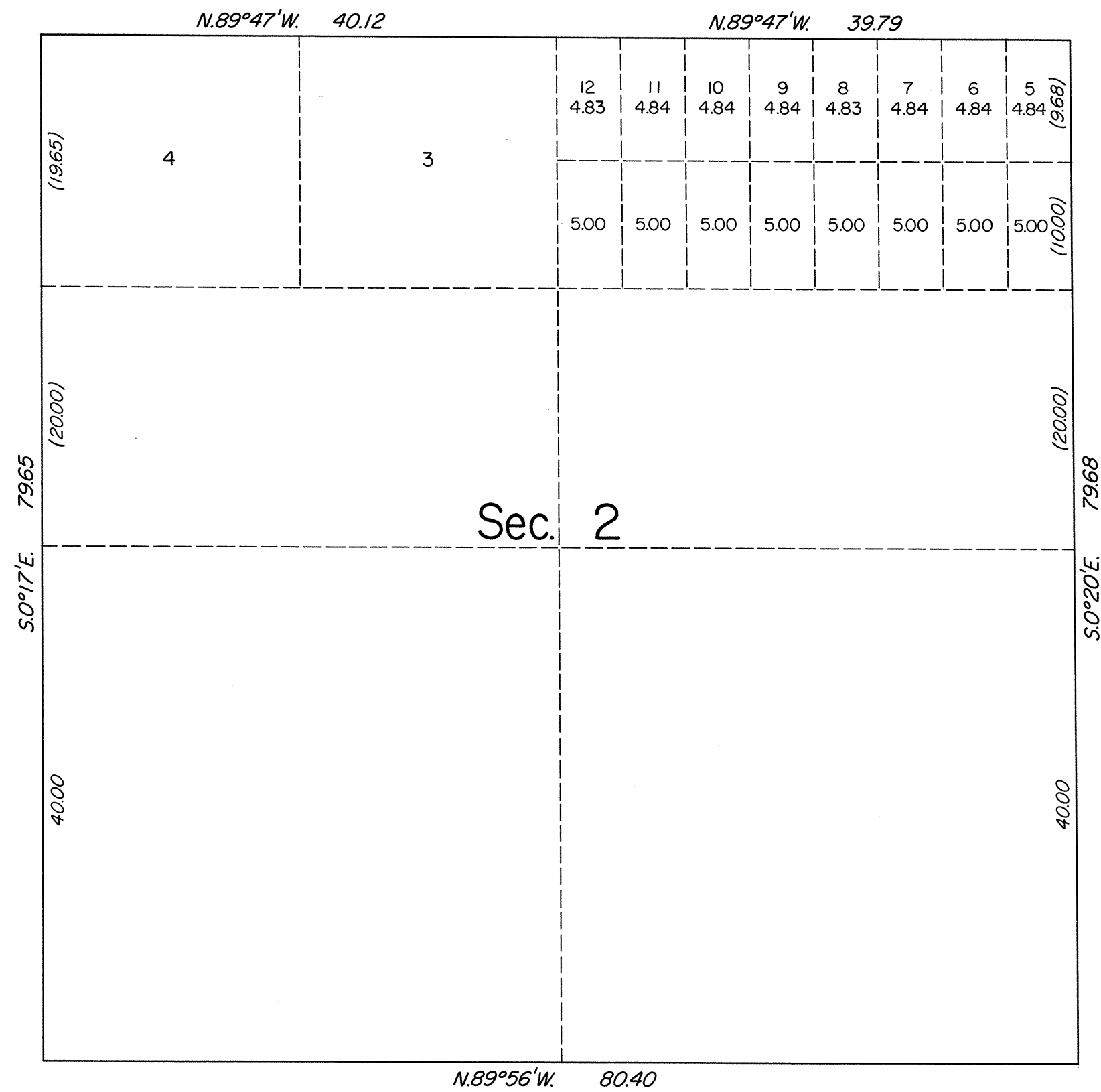
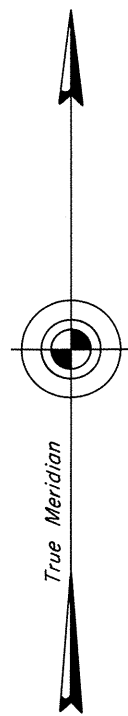


ORIGINAL

OFFICIALLY FILED  
NEVADA STATE OFFICE  
10:00 AM MAY 6, 1982

TOWNSHIP 33 NORTH, RANGE 51 EAST, OF THE MOUNT DIABLO MERIDIAN, NEVADA  
SUPPLEMENTAL PLAT OF SECTION 2



This plat showing a subdivision of original lots 1 and 2, sec. 2, T. 33 N., R. 51 E., Mount Diablo Meridian, Nevada is based upon the plat approved October 21, 1903, and the resurvey of the north boundary depicted on the plat of T. 34 N., R. 51 E. accepted May 2, 1922.

UNITED STATES DEPARTMENT OF THE INTERIOR  
BUREAU OF LAND MANAGEMENT  
Denver, Colorado March 31, 1982

This plat, showing amended lottings, is based upon the official records and, having been correctly prepared in accordance with the regulations of this Bureau, is hereby accepted.

For the Director

Acting Chief, Cadastral Survey  
Examination and Approval Staff

