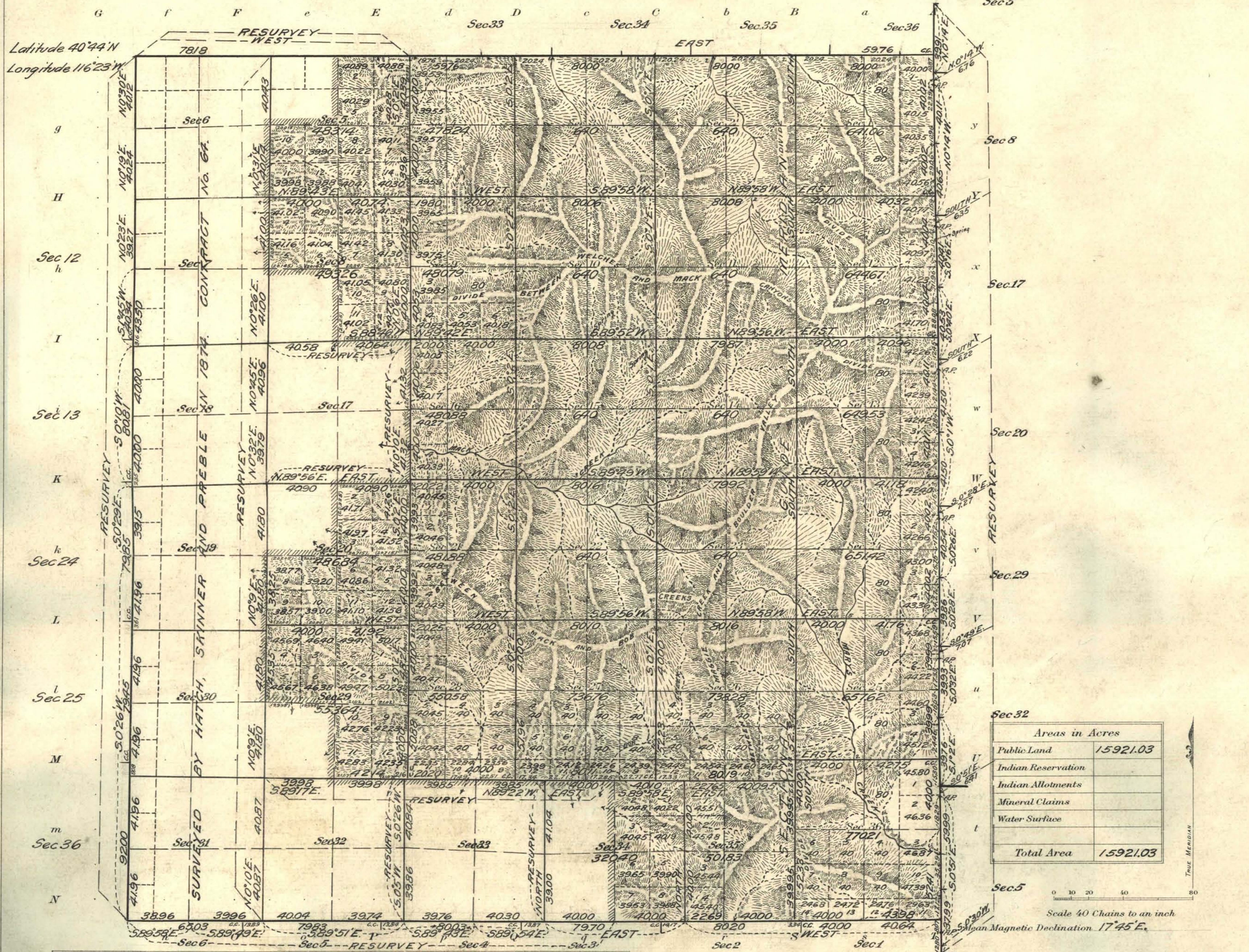


Accepted May 2, 1922.

# Township No 33 North Range No 50 East Mt Diablo Meridian, Nevada



Areas in Acres	
Public Land	15921.03
Indian Reservation	
Indian Allotments	
Mineral Claims	
Water Surface	
<b>Total Area</b>	<b>15921.03</b>

Scale 40 Chains to an inch  
 Mean Magnetic Declination 17°45' E.

Surveys Designated	By Whom Surveyed	Group		Amount of Surveys		When Surveyed		
		No.	Date of Instructions	Mls.	chs.	lks.	When Begun	Completed
North Boundary Res	Scott P. Stewart	27	Mar. 23, 1914	1	78	18	Oct. 2, 1914	Oct. 5, 1914
North Boundary	and Rubin W. Riley	3	and Feb. 14, 1914	3	59	76	Oct. 5, 1914	Oct. 19, 1914
East Boundary Res	"	6	"	6	62	68	Oct. 22, 1914	Nov. 4, 1914
South Boundary Res	"	3	"	3	38	76	Oct. 21, 1914	May 11, 1916
South Boundary	"	2	"	2	26	67	Oct. 21, 1914	May 11, 1916
West Boundary Res	"	6	"	6	12	08	Oct. 2, 1914	May 29, 1916
Subdivision Res	"	13	"	13	53	22	Oct. 24, 1914	May 28, 1916
Subdivision	"	40	"	40	78	55	Oct. 23, 1914	May 23, 1916
Corrections	Scott P. Stewart J.C. Clark		Apr. 6, 1916 Feb. 11, 1918				May 11, 1916 June 1, 1918	May 23, 1916

The above map of Township No. 33 North Range No. 50 East of the Mt. Diablo Meridian Nevada is strictly conformable to the field notes of the survey thereof on file in this office, which have been examined and approved

U. S. Surveyor General's Office.  
 Reno, Nevada, October 18, 1921

*J. G. Caldwell*  
 Surveyor General.