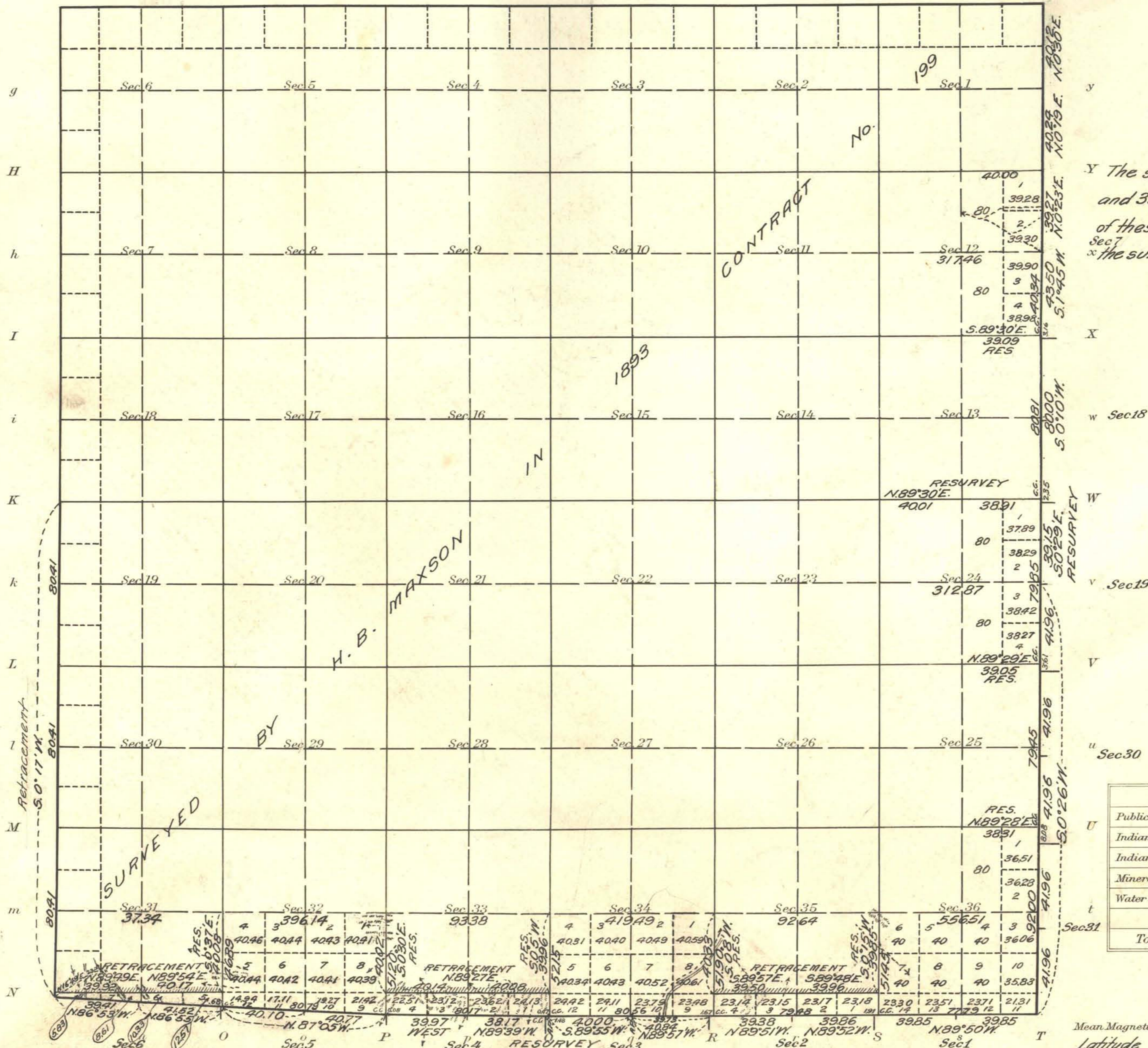


Accepted May 2, 1922.

Township No. 33 North Range No. 49 East Mt. Diablo Meridian, Nevada

G f F e E d D c C b B a A



NOTE  
 The shaded lines in sections 31, 33 and 35 indicates the south boundary of these sections in accordance with Sec 7 of the survey approved December 23, 1893

Areas in Acres	
Public Land	2225.83
Indian Reservation	
Indian Allotments	
Mineral Claims	
Water Surface	
<b>Total Area</b>	<b>2225.83</b>

Scale 40 Chains to an inch  
 Mean Magnetic Declination 17° 45' E.  
 Latitude 40° 39' N.  
 Longitude 116° 23' W.

Surveys Designated	By Whom Surveyed	Group No.	Date of Instructions	Amount of Surveys			When Surveyed	
				Mls.	chs.	lks.	Began	Completed
East Boundary Res.	Scott P. Stewart	27	Mar. 23, 1914	6	12	08	Oct. 2, 1914	May 29, 1916
South Boundary Res.	"	"	Feb. 14, 1914	5	79	72	Apr. 24, 1916	May 16, 1916
South Boundary Secs. 31, 33 and 35 Retr. (Maxson)	"	"	Letter Dec. 7, 1914					
Subdivision Res.	"	"	Apr. 6, 1916	2	79	77	May 2, 1916	May 16, 1916
Corrections	J.G. Clark	"	Feb. 11, 1918				May 18, 1918	May 21, 1918
Corrections	Emil Voigt	"	June 26, 1920				June 29, 1920	June 29, 1920
West Boundary Retr.	"	3	Apr. 28, 1916	3	01	23	Apr. 28, 1916	May 18, 1918

The above map of Township No. 33 North Range No. 49 East of the Mt. Diablo Meridian Nevada is strictly conformable to the field notes of the survey thereof on file in this office, which have been examined and approved.  
 U. S. Surveyor General's Office.  
 Reno, Nevada, October 18, 1921

J. C. Belder  
 Surveyor General.