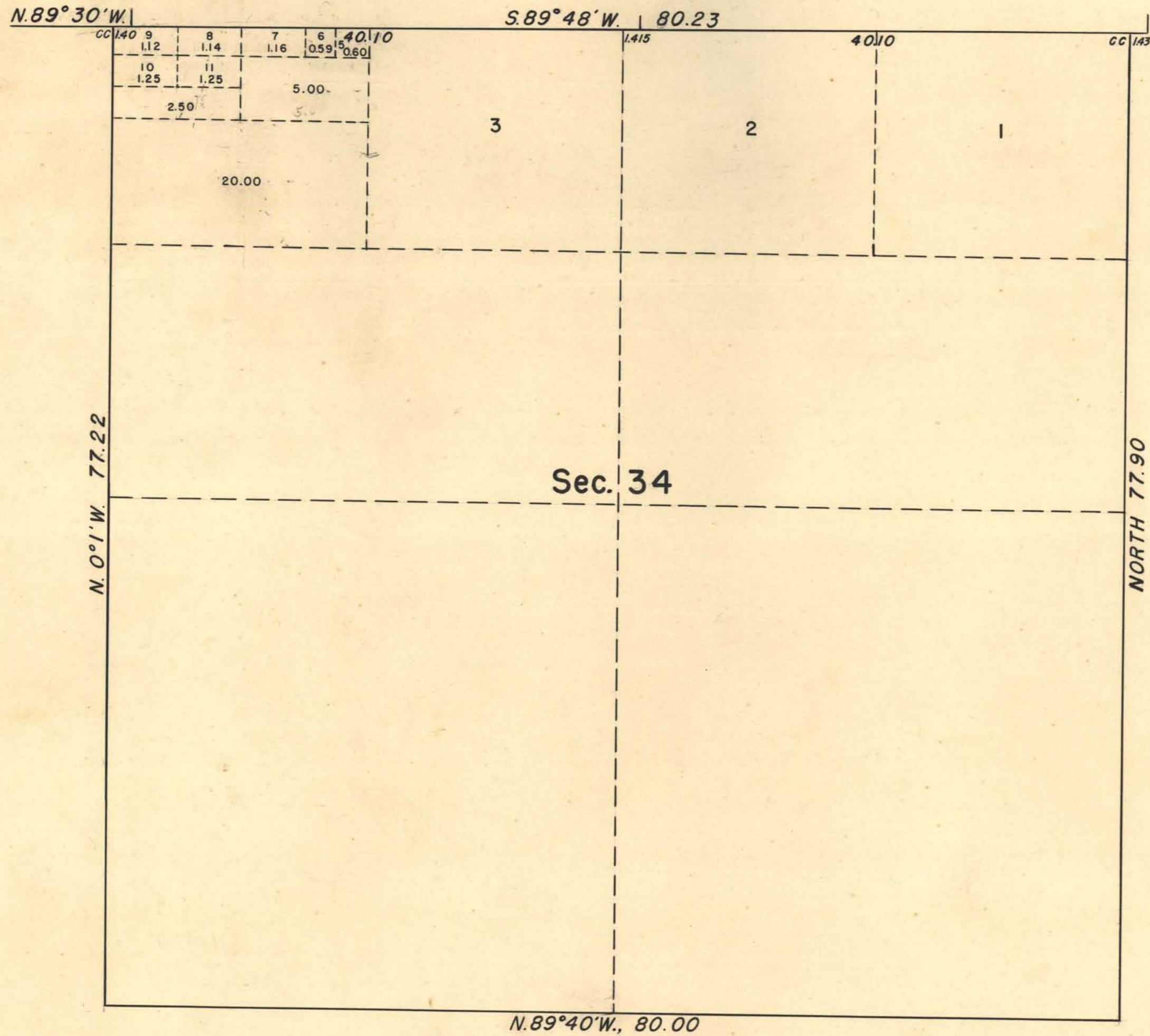


RECEIVED
 LAND AND SURVEY OFFICE
 RENO, NEVADA
 MAY 14 1951
 ORIGINAL

TOWNSHIP 33 NORTH, RANGE 48 EAST, OF THE MOUNT DIABLO MERIDIAN, NEVADA
 SUPPLEMENTAL PLAT OF SECTION 34



THIS PLAT REPRESENTS A
 SUBDIVISION OF ORIGINAL LOT 4 AS
 SHOWN ON THE PLAT APPROVED OCTOBER
 18, 1921.

UNITED STATES DEPARTMENT OF THE INTERIOR
 BUREAU OF LAND MANAGEMENT
 WASHINGTON, D. C., APRIL 18, 1951
 THIS PLAT, SHOWING AMENDED LOTTINGS, IS BASED UPON THE OFFICIAL
 RECORDS AND, HAVING BEEN CORRECTLY PREPARED IN ACCORDANCE WITH THE
 REGULATIONS, IS HEREBY ACCEPTED.

FOR THE DIRECTOR
William F. Richards
 CHIEF, BRANCH OF SURVEYS

1797A

T. 33 N, R. 48 E.

REC
 E.S.H