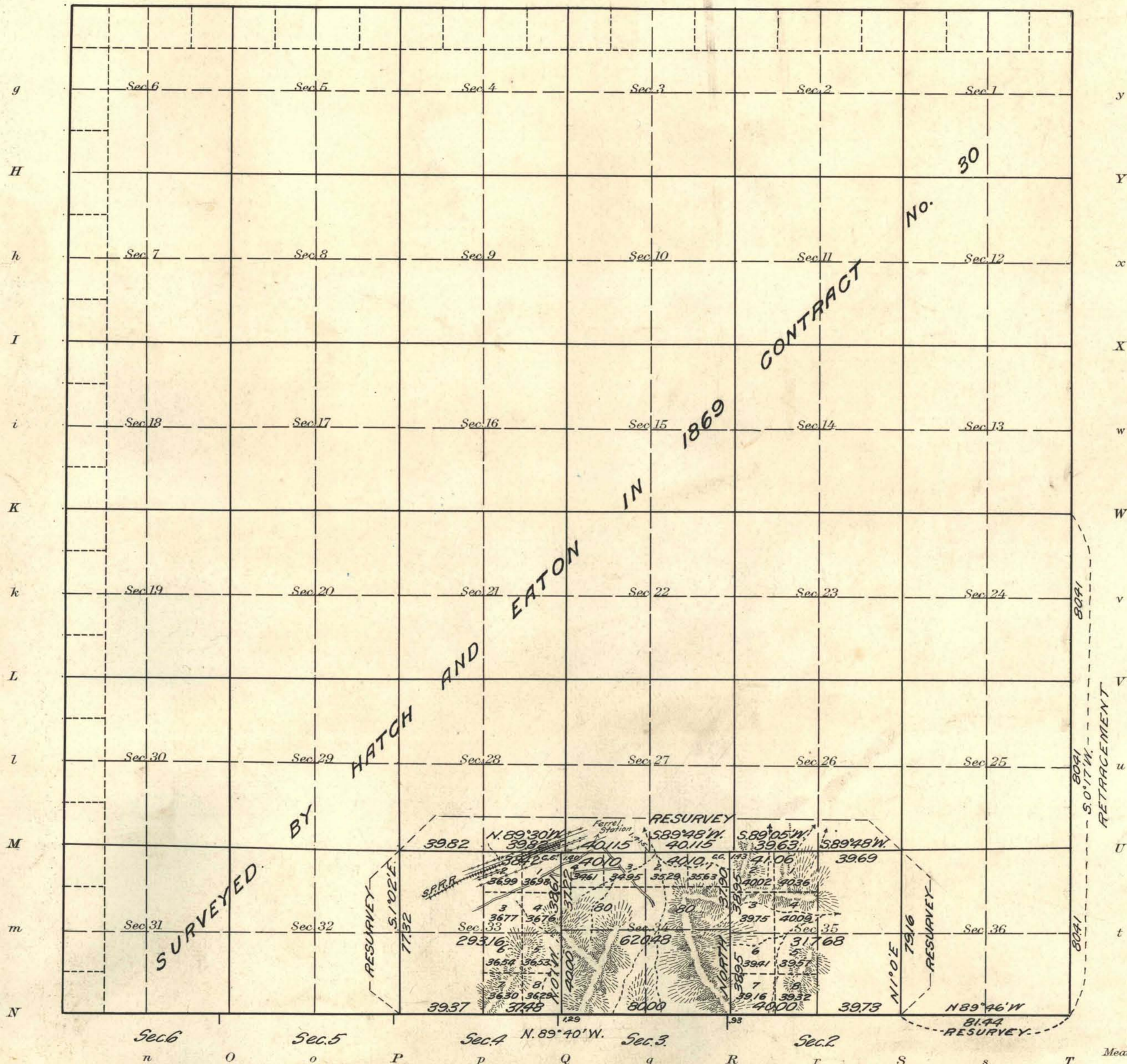


Township No. 33 North Range No. 48 East Mt. Diablo Meridian, Nevada

G f F e E d D c C b B a A



Areas in Acres	
Public Land	1231.32
Indian Reservation	
Indian Allotments	
Mineral Claims	
Water Surface	
Total Area	1231.32

Surveys Designated	By Whom Surveyed	Group		Amount of Surveys			When Surveyed	
		No.	Date of Instructions	Mls.	chs.	lks.	Begun	Completed
Subdivision Res.	H. W. Reppert	27	March 23, 1914	4	75	67	Aug. 7, 1914	Aug. 8, 1914
Subdivision	and A. I. Harris	"	and Feb. 14, 1914	1	75	12	Aug. 8, 1914	Aug. 8, 1914
South Boundary Res.		"	"	1	1	44		
East Boundary Res.	Peter Stewart and Clark	3		01	23		Apr. 23, 1916	May 12, 1918

The above map of Township No. 33 North Range No. 48 East of the Mt. Diablo Meridian, Nevada is strictly conformable to the field notes of the survey thereof on file in this office, which have been examined and approved
 U. S. Surveyor General's Office.
 Reno, Nevada, October 18, 1921

J. E. Selder
 Surveyor General.