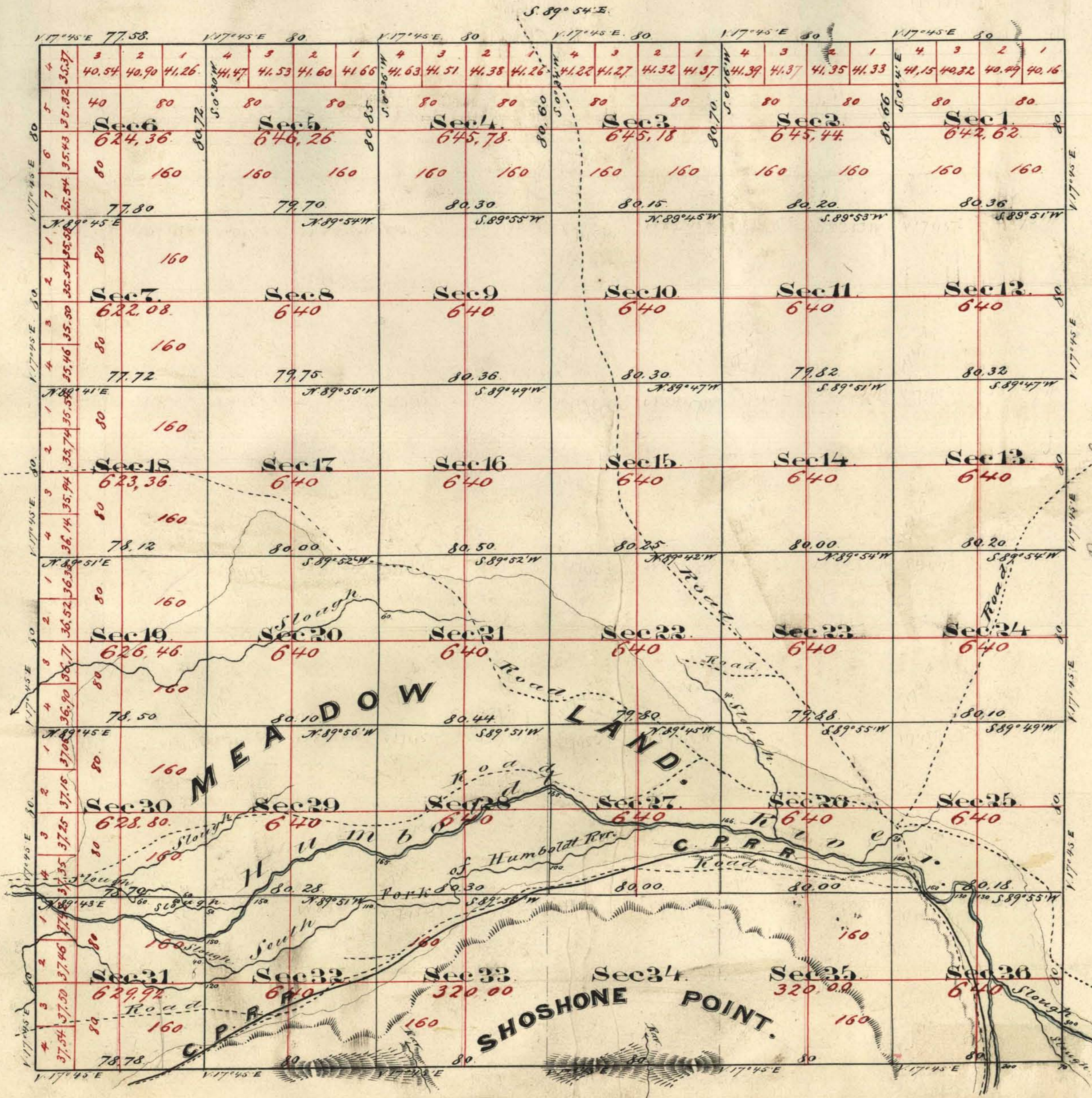


Township No 33 North. Range No 48 East. Mount Diablo Meridian.



Road Cont 199

Aggregate Area of Public Land (surveyed) 21,700.25 Acres  
 Estimated - - - - - Shoshone Point (unsurveyed) 1,280.00 - - -  
 Aggregate. 22,980.25 Acres

Commenced October 12<sup>th</sup> 1859.  
 Completed - - - - - 15<sup>th</sup> 1859.

Subdivision lines not otherwise noted run with a Variation of 17° 45' East.

Surveys Designated	By whom surveyed	Date of Contract	Amount of Survey in Sec. & 1/4s	When surveyed	No. Cont.
Township lines	A. Hatch & J. H. Eaton	April 25 <sup>th</sup> 1859	23 - 76 - 36	1859	30
Subdivision lines	.....	.....	57 - 77 - 66	October 1859	"

The above Map of Township No 33 North, Range 48 East, Mount Diablo Meridian is strictly conformable to the field notes of the surveys thereof on file in this Office, which have been examined and approved. U. S. Surveyor General's Office, Virginia City Nevada, December 7<sup>th</sup> 1859.

E. J. Davis  
 U. S. Surveyor General Nevada