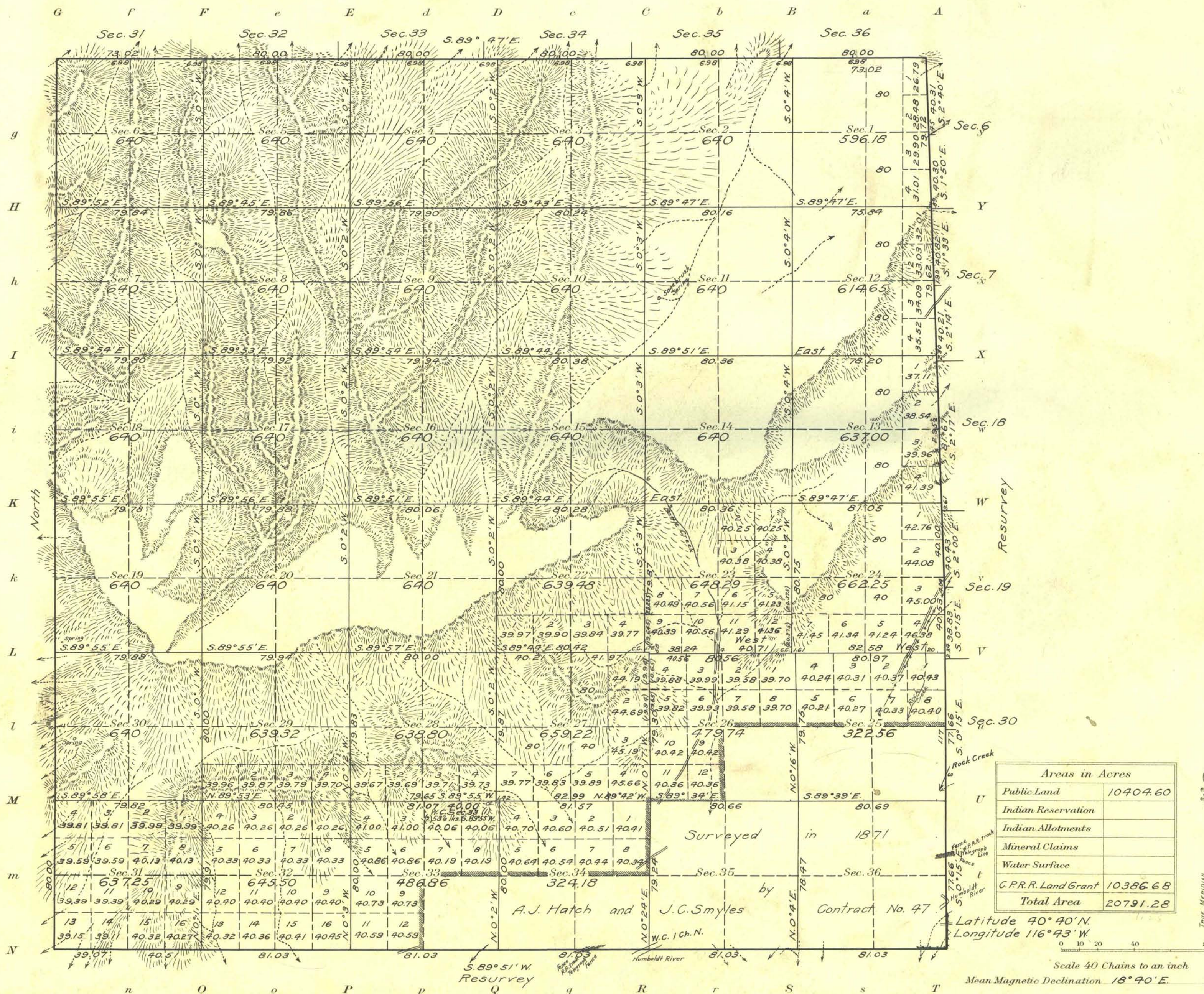


Township N^o 33 North Range N^o 46 East M^t Diablo Meridian, Nevada



| Surveys Designated | Whom Surveyed | Group | | Amount of Surveys | | When Surveyed | | |
|--------------------|---------------------|-------|----------------------|-------------------|------|---------------|---------------|----------------|
| | | No. | Date of Instructions | Mls. | chs. | lks. | When Begun | When Completed |
| W. Boundary | Winfred A. Pray | 24 | Feb. 25, 1913 | 6 | 00 | 00 | May 5, 1914 | May 5, 1914 |
| N. " | Winfred A. Pray | " | " | 5 | 73 | 02 | May 7, 1914 | May 7, 1914 |
| E. " | (res.) J.G. Collins | " | Feb. 25, 1913 | 5 | 77 | 89 | Aug. 11, 1913 | Aug. 16, 1913 |
| S. " | " | " | " | 6 | 4 | 73 | " 8, " | " 9, " |
| Subdivisions | Winfred A. Pray | " | Feb. 25, 1913 | 4 | 79 | 06 | May 1, 1914 | May 4, 1914 |
| " | " | " | " | 55 | 1 | 57 | " 8, " | " 21, " |

The above map of Township No. 33 North Range No. 46 East of the Mt Diablo Meridian Nevada is strictly conformable to the field notes of the survey thereof on file in this office, which have been examined and approved

U. S. Surveyor General's Office.
 Reno, Nevada January 29, 1916

John B. Sullivan
 Surveyor General.

M.S.P. orig.
 H.S.P. comp.