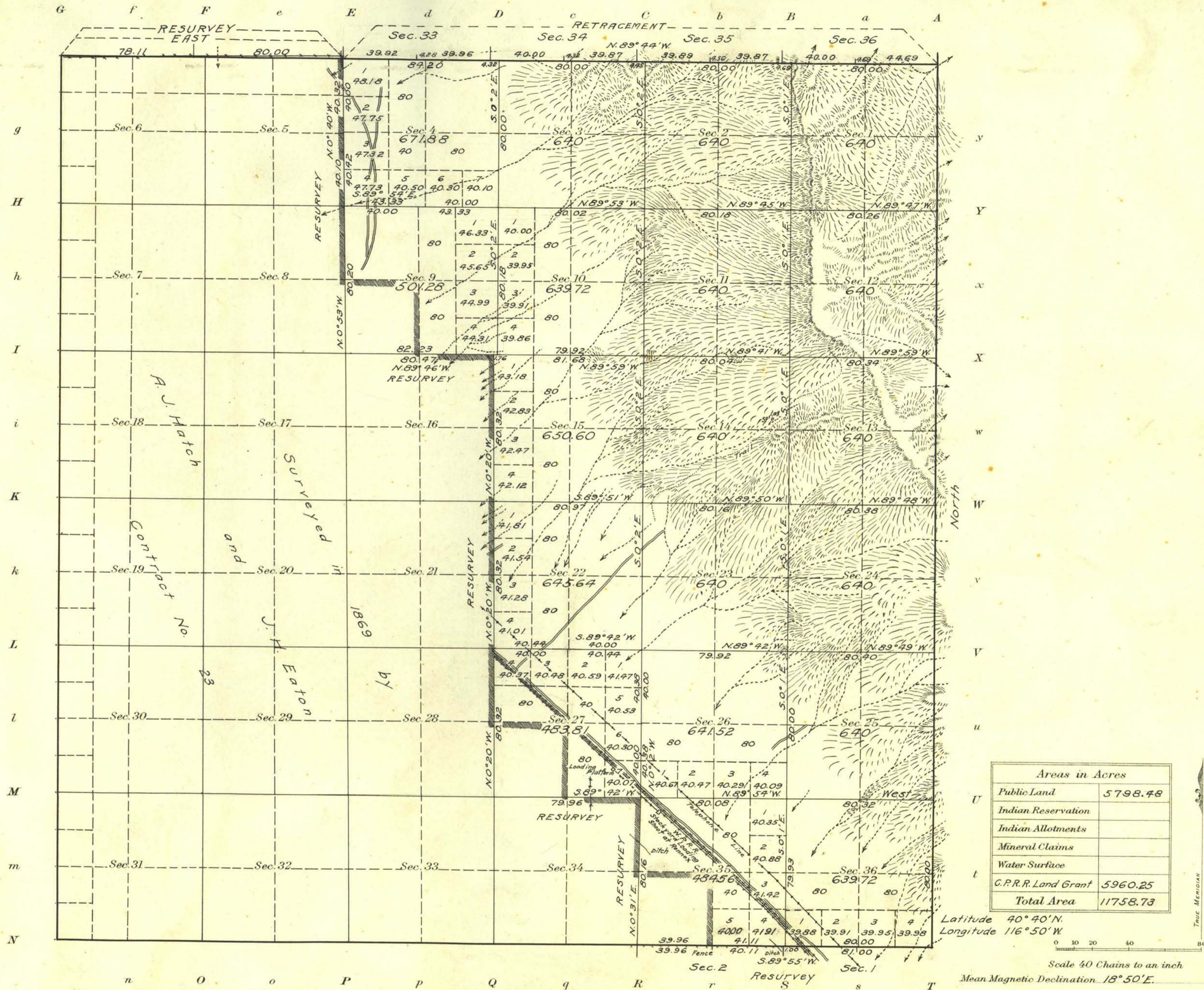


# Township No. 33 North Range No. 45 East Mt. Diablo Meridian, Nevada



7/2/62 State Hi/Way reported cor. secs. 27, 28, 33 & 34, T33N., R45E. was torn out by road grader. Not referenced.

Surveys Designated	By Whom Surveyed	Group			When Surveyed	
		No.	Date of instructions	Amount of Surveys Mls. chs. fcs.	Begin	Completed
E. Boundary	Winfred A. Pray	24	April 25, 1914	6 00 00	May 5, 1914	May 5, 1914
S. " (res.)	"	"	June 12, 1914	2 01 07	Aug. 31, 1914	Aug. 31, 1914
N. " (res. & ret.)	Guy Redwine, John G. Collins & W. H. Pray	"	Feb. 25, 1913	6 2 31	Oct. 2, 1913	Sept. 2, 1914
Subdivisions	Winfred A. Pray	"	June 12, 1914	28 09 01	Sept. 3, 1914	Sept. 9, 1914
" (res.)	"	"	"	8 02 17	Aug. 31, 1914	Sept. 1, 1914

The above map of Township No. 33 North Range No. 45 East of the Mt. Diablo Meridian Nevada is strictly conformable to the field notes of the survey thereof on file in this office, which have been examined and approved

U.S. Surveyor General's Office.  
Reno, Nevada January 29, 1916

*John B. Sullivan*  
Surveyor General.