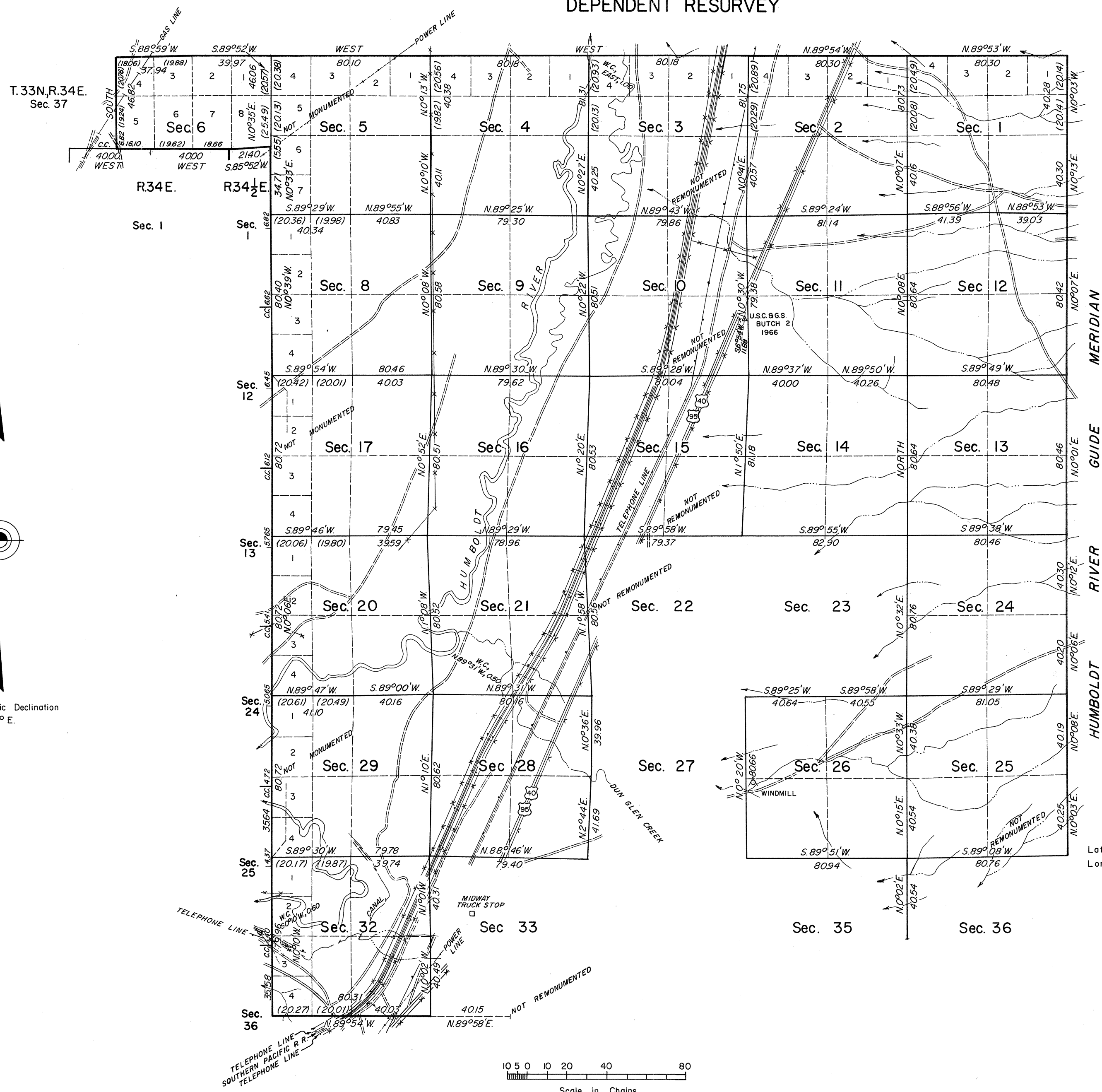


TOWNSHIP 33 NORTH, RANGE 35 EAST, OF THE MOUNT DIABLO MERIDIAN, NEVADA

DEPENDENT RESURVEY



A history of the earlier surveys is contained in the field notes.

This plat represents the dependent re-survey of portions of the south, east, and west boundaries and subdivisional lines, designed to restore the corners in their true original locations according to the best available evidence, and, the survey of a portion of the west boundary of T. 33 N., R. 35 E., Mount Diablo Meridian, Nevada.

Lottings and areas (except as shown hereon) are as shown on the plat approved August 4, 1868.

These surveys were executed by James R. Munson and Dennis D. Bland, Cadastral Surveyors, September 16, 1966, to November 8, 1966, under Special Instructions dated September 16, 1966, for Group No. 442, Nevada.

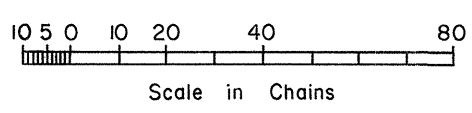
Latitude 40°41' 51.0" N.
Longitude 117°59' 01.4" W.

UNITED STATES DEPARTMENT OF THE INTERIOR
BUREAU OF LAND MANAGEMENT
Washington, D. C. February 16, 1970

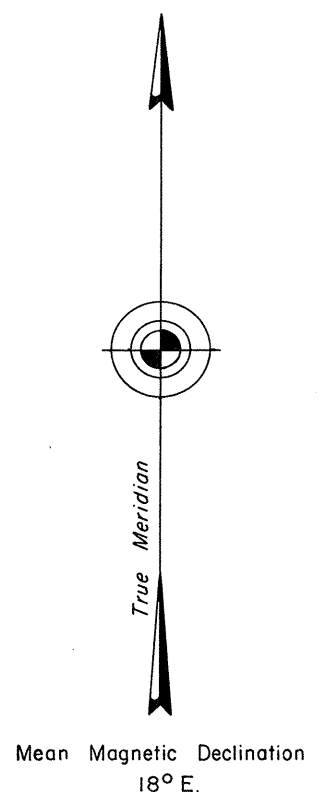
This plat is strictly conformable to the approved field notes, and the survey, having been correctly executed in accordance with the requirements of law and the regulations of this Bureau, is hereby accepted.

For the Director

Chief, Division of Cadastral Survey



Area Resurveyed 14,433.21 Acres



OFFICIALLY FILED
NEVADA LAND OFFICE
10:00 AM April 14, 1970

T33N R35E