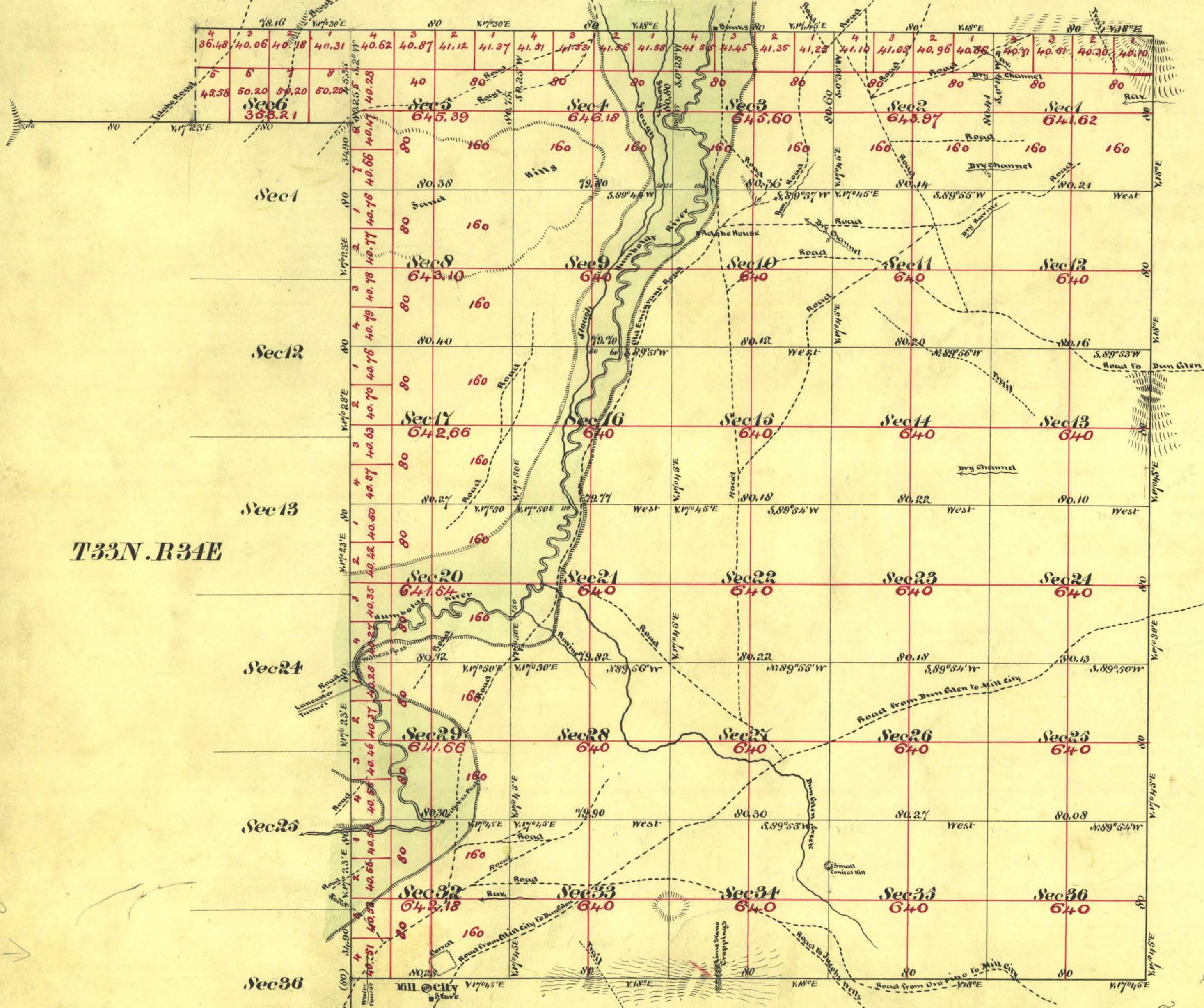


Township N^o 33 North

Range N^o 35 East

Mount Diablo Meridian



T33N.R34E

Aggregate Area of Public Lands 19,877.11 Acres

see to 68 investigation

Surveys Designated	By Whom Surveyed	Date of Contract	Amount of Surveys (Mils. lbs. lbs)	When Surveyed	JP ^o Cor.
West Boundary of Township	E. H. Dyer	October 1 st 1863	5, 34, 90,	1863	12
East Boundary of Township	William Epler	June 12 th 1867	6, 00, 00,	1867	1
West of Township Line	"	July 20 th 1867	10, 78, 41	1867	5
Subdivision Lines	A. J. Hatch	December 21 st 1867	49, 51, 24,	April 1 st 1868	12

Subdivision Lines not otherwise noted run with a Variation of 15° East

The above Map of Township No 33 North Range No 35 East Mount Diablo Meridian is strictly conformable to the field notes of the surveys thereof on file in this Office which have been examined and approved.

U. S. Surveyor General's Office
 Virginia City Nevada
 August 2nd 1868

see to 68 investigation

T33N.R35E.

A. R. Safford
 U. S. Surveyor Genl Nevada
 V.P.